

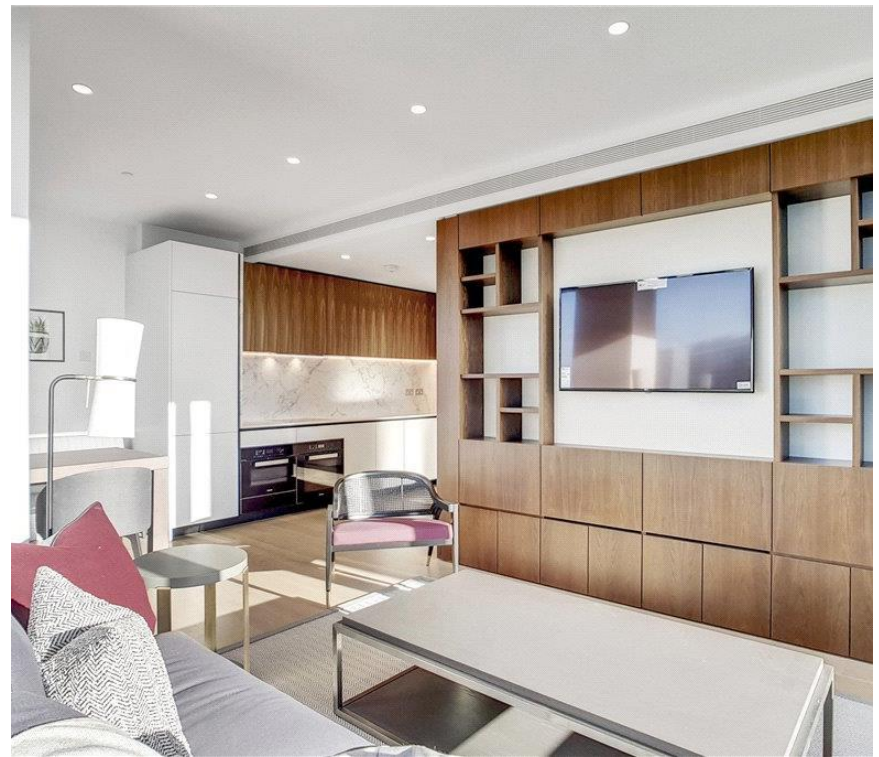


## Buckingham Gate, London SW1E

Price £800 per week - Furnished









# Description

A beautifully presented sixth floor apartment which has been interior designed by TH2 Designs and offers spectacular south westerly views towards the river and the City of London. Accommodation comprises one double bedroom, one bathroom, a fully fitted kitchen with seating area adjoining a stylishly decorated reception. Further benefits include wooden flooring and marble back drops with floor to ceiling glass windows providing natural light and city views. Underground parking is available by separate negotiation.

As well as paying the rent, you may also be required to make permitted payments. Please visit [jll.co.uk/fees](http://jll.co.uk/fees) for details of fees which may be payable when renting a property. If your tenancy does not qualify as an AST, additional fees may apply.

- 1 Double bedroom
- 1 Bathroom
- Reception room
- Open plan kitchen
- Sixth floor
- Lift
- 24 Hour concierge
- Parking by negotiation
- Approx. 657 sq ft (61 sq m)
- Furnished



# Floorplan

657 sq ft | 61 sq m

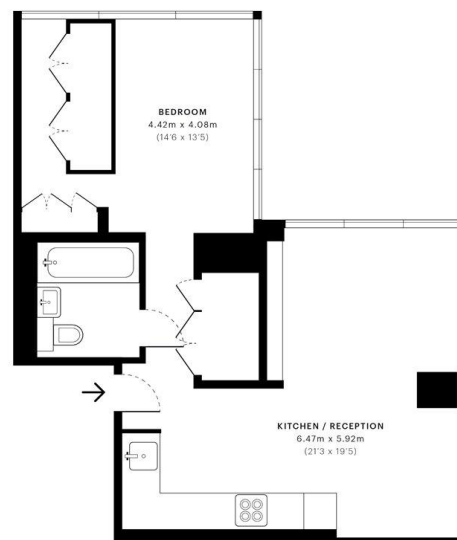


The Tower, Buckingham Green, SW1E

CAPTURE DATE  
22/01/2019

LASER SCAN POINTS  
24,800,723

GROSS INTERNAL AREA  
59.42 Sqm / 639.60 Sqft



— Seventh Floor

GROSS INTERNAL AREA  
The footprint of the property  
59.42 Sqm / 639.60 Sqft

NET AREA (INTERNAL)  
Excludes walls and external features  
56.26 Sqm / 605.58 Sqft

EXTERNAL STRUCTURAL FEATURES  
Balconies, terraces, verandas etc.  
0.00 Sqm / 0.00 Sqft

RESTRICTED HEAD HEIGHT  
Limited use area under 1.5m  
0.00 Sqm / 0.00 Sqft



Spec floor plans are produced in accordance with Royal Institution of Chartered Surveyors Property Measurement Standards. If you intend to rely on any measurement in a transaction you should perform your own checks. Plot/Diagrams illustrative only and excluded from all area calculations.



IPMS 3B RESIDENTIAL  
63.29 Sqm / 681.25 Sqft  
IPMS 3C RESIDENTIAL  
60.14 Sqm / 647.35 Sqft

SPEC ID:  
5c45dbd25ba2c40a0146b

Westminster  
31 Palmer Street,  
Westminster SW1H 0NP  
020 7306 1630  
westminster@eu.jll.com

*Urban living, your way.*

[jll.co.uk/residential](http://jll.co.uk/residential)

© 2019 Jones Lang LaSalle IP, Inc. All rights reserved. All information contained herein is from sources deemed reliable; however, no representation or warranty is made to the accuracy thereof.

