



Eccleston Street, London SW1W

Price £575 per week - Furnished





Description

A recently refurbished second floor flat (with lift) in this well maintained building on Eccleston Street. The property consists of one double bedroom with en suite bathroom, guest cloakroom, reception room and a fully fitted, open plan kitchen. The apartment is served by a lift, has a video entry phone system, comfort cooling and the benefit of a building services manager on site Monday to Friday. Chantrey House is ideally located for the many shopping and transport amenities of Victoria station and surrounding areas.

As well as paying the rent, you may also be required to make permitted payments. Please visit jll.co.uk/fees for details of fees which may be payable when renting a property. If your tenancy does not qualify as an AST, additional fees may apply.

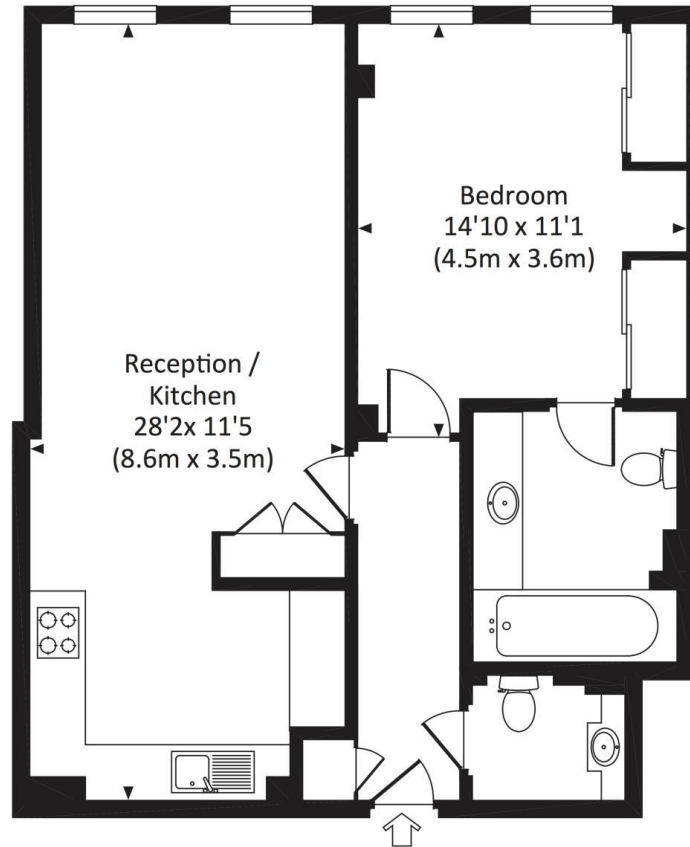
- 1 Double bedroom
- 1 Bathroom (en suite)
- Guest cloakroom
- Reception room
- Open plan kitchen
- Second floor
- Lift
- Building manager
- Approx. 651 sq ft (60 sq m)
- Furnished



Floorplan

651 sq ft | 61 sq m

Approx. gross internal area
651 Sq Ft. / 60.5 Sq M.



SECOND FLOOR

dj All measurements are approximate and for illustration purposes only as defined by the RICS Code of Measuring Practice © 2015 Dowling Jones Design www.dowlingjones.com 020 7610 9933

Westminster
31 Palmer Street,
Westminster SW1H 0NP
020 7306 1630
westminster@eu.jll.com

Urban living, your way.

jll.co.uk/residential

© 2019 Jones Lang LaSalle IP, Inc. All rights reserved. All information contained herein is from sources deemed reliable; however, no representation or warranty is made to the accuracy thereof.

