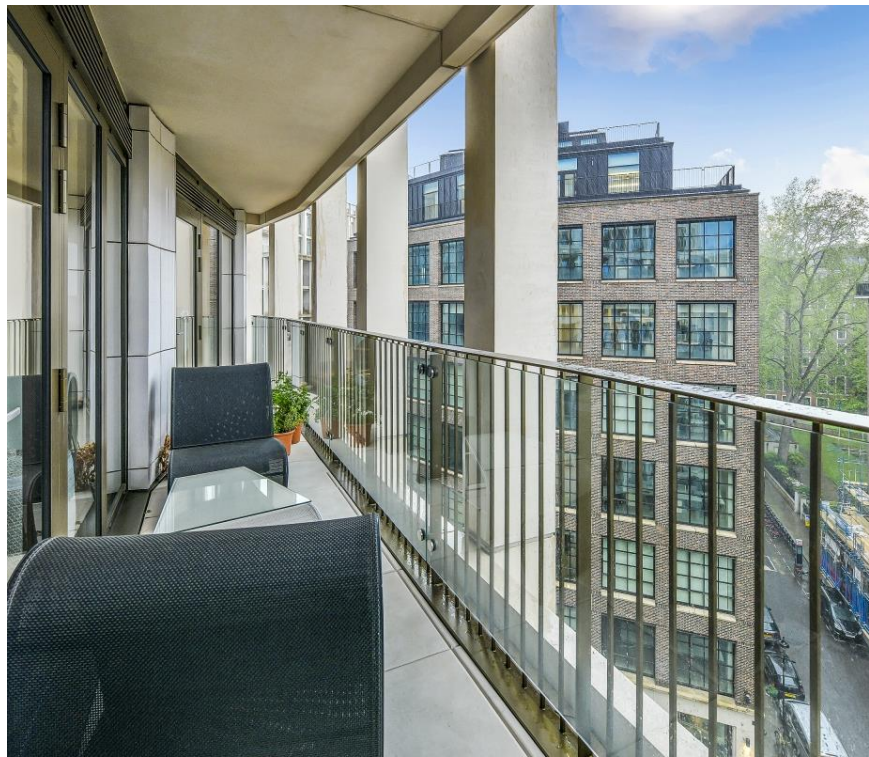




## John Islip Street, London SW1P

Price £1,450 per week - Unfurnished





# Description

A bright and modern apartment, situated in the popular building of Cleland House in Pimlico. The apartment consists of three double bedrooms, a bathroom and a shower room (both en suite), a reception room with open plan kitchen and a balcony. The apartment is presented to a very high standard throughout and benefits from being within walking distance of Vauxhall Bridge Road, Pimlico station and the River Thames.

As well as paying the rent, you may also be required to make permitted payments. Please visit [jll.co.uk/fees](http://jll.co.uk/fees) for details of fees which may be payable when renting a property. If your tenancy does not qualify as an AST, additional fees may apply.

- Three double bedrooms
- One bathroom (en suite)
- One shower room (en suite)
- Reception room
- Open plan kitchen
- Balcony
- One parking space
- Unfurnished
- Approx. 1358 sq ft (126 sq m)
- EPC: B



# Floorplan

1,358 sq ft | 126 sq m

Cleland House,  
John Islip Street, SW1P  
Approximate Gross Internal Area  
126 sq m / 1,358 sq ft

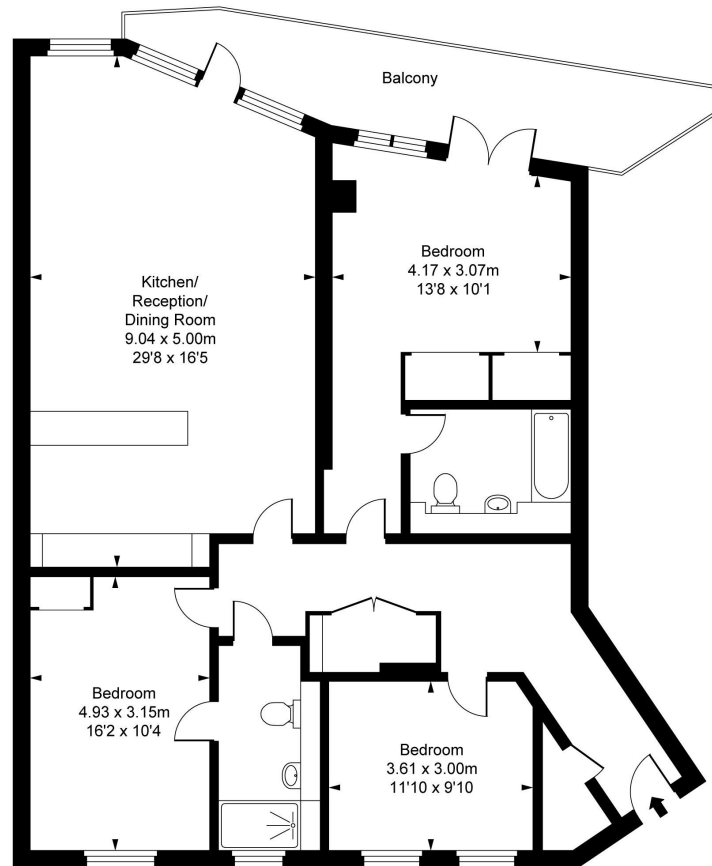


ILLUSTRATION FOR IDENTIFICATION PURPOSES ONLY  
ALL MEASUREMENTS AND AREA FIGURES SUPPLIED BY OTHERS, ACCURACY IS NOT GUARANTEED.  
THIS PLAN MUST NOT BE REPRODUCED BY ANY OTHER PERSON WITHOUT PERMISSION

Westminster  
31 Palmer Street,  
Westminster SW1H 0NP  
020 7306 1630  
westminster@eu.jll.com

*Urban living, your way.*

[jll.co.uk/residential](http://jll.co.uk/residential)

© 2019 Jones Lang LaSalle IP, Inc. All rights reserved. All information contained herein is from sources deemed reliable; however, no representation or warranty is made to the accuracy thereof.

