



Vincent Square, London SW1P

Price £650 per week - Furnished



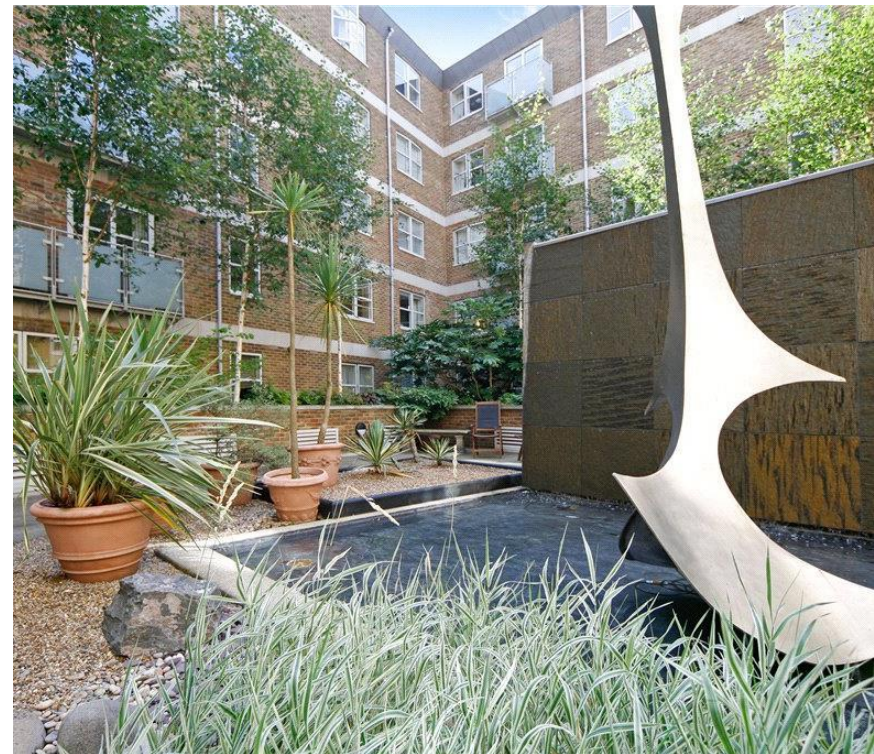


Description

A recently refurbished second floor flat (with lift) in this popular development in the heart of Victoria. The property consists of master bedroom with en suite shower room, second double bedroom, one bathroom, a spacious reception room and a modern, fully fitted kitchen. The flat also benefits from a daytime concierge service, use of the gym, sauna and steam room and allocated parking.

As well as paying the rent, you may also be required to make permitted payments. Please visit jll.co.uk/fees for details of fees which may be payable when renting a property. If your tenancy does not qualify as an AST, additional fees may apply.

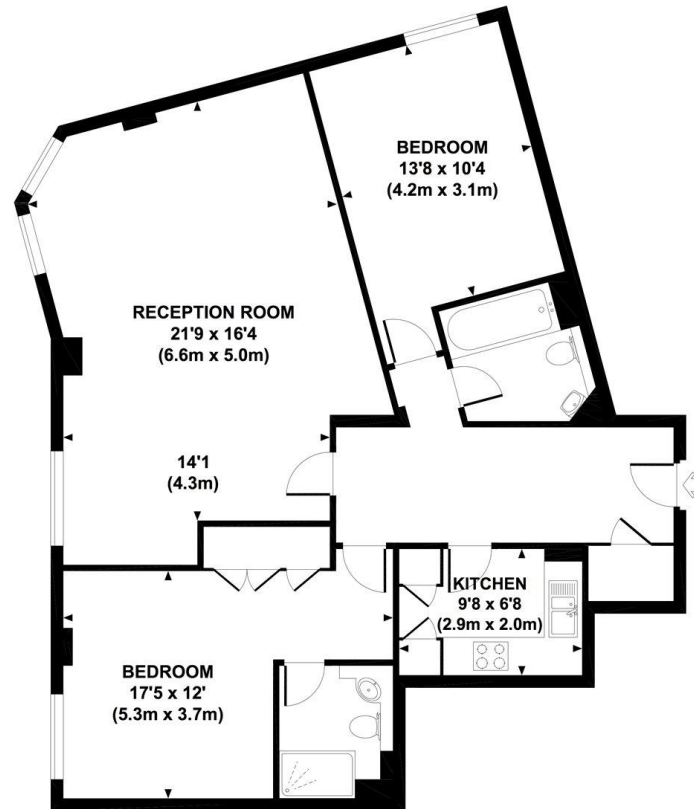
- 2 Double bedrooms
- 1 Bathroom
- 1 Shower room (en suite)
- Reception room
- Fully fitted kitchen
- Second floor
- Lift
- Concierge
- Allocated parking
- Use of leisure facilities



Floorplan

1,009 sq ft | 94 sq m

Approx. gross internal area
1009 Sq Ft. / 94 Sq M.



SECOND FLOOR

dis All measurements are approximate and for illustration purposes only as defined by the RICS Code of Measuring Practice © 2012 Dowling Jones Design www.dowlingjones.com 020 7610 9933

Westminster
31 Palmer Street,
Westminster SW1H 0NP
020 7306 1630
westminster@eu.jll.com

Urban living, your way.

jll.co.uk/residential

© 2019 Jones Lang LaSalle IP, Inc. All rights reserved. All information contained herein is from sources deemed reliable; however, no representation or warranty is made to the accuracy thereof.

