



## Alderney Street, London SW1V

Price £435 per week - Furnished







# Description

A wonderful raised ground floor flat in this converted terrace house close to the amenities of Victoria. The property consists of one double bedroom with en suite bathroom, reception room and a fully fitted kitchen. The property is light and bright and it is available on a furnished basis.

As well as paying the rent, you may also be required to make permitted payments. Please visit [jll.co.uk/fees](http://jll.co.uk/fees) for details of fees which may be payable when renting a property. If your tenancy does not qualify as an AST, additional fees may apply.

- 1 Double bedroom
- 1 Bathroom
- Reception room
- Fully fitted kitchen
- Raised ground floor
- Approx. 525 sq ft (49 sq m)
- Furnished
- EPC: C

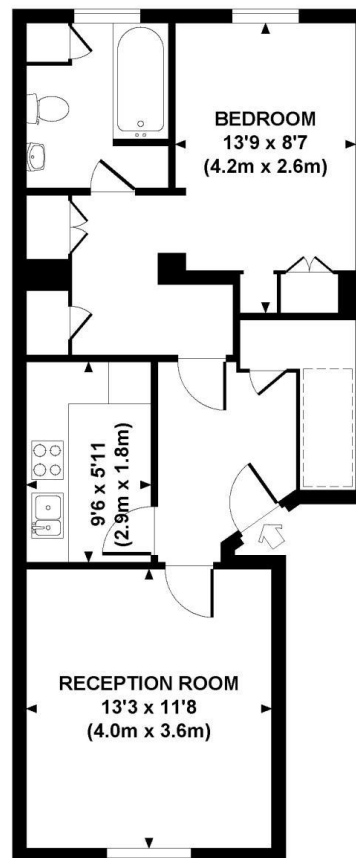




# Floorplan

525 sq ft | 49 sq m

Approx. gross internal area  
525 Sq Ft. / 49 Sq M.



GROUND FLOOR

 **dowling jones**  
design

Every attempt has been made to ensure the accuracy of this floor plan however, measurements are approximate and for illustration purposes only. Not to scale. Photography, floor plans & brochures.  
© 2011 Dowling Jones Design Ltd. www.dowlingjonesdesign.com 020 7610 9933 / 07793 914 209

Westminster  
31 Palmer Street,  
Westminster SW1H 0NP  
020 7306 1630  
westminster@eu.jll.com

*Urban living, your way.*

[jll.co.uk/residential](http://jll.co.uk/residential)

© 2019 Jones Lang LaSalle IP, Inc. All rights reserved. All information contained herein is from sources deemed reliable; however, no representation or warranty is made to the accuracy thereof.

