



Victoria Street, London SW1H

Price £450 per week - Furnished



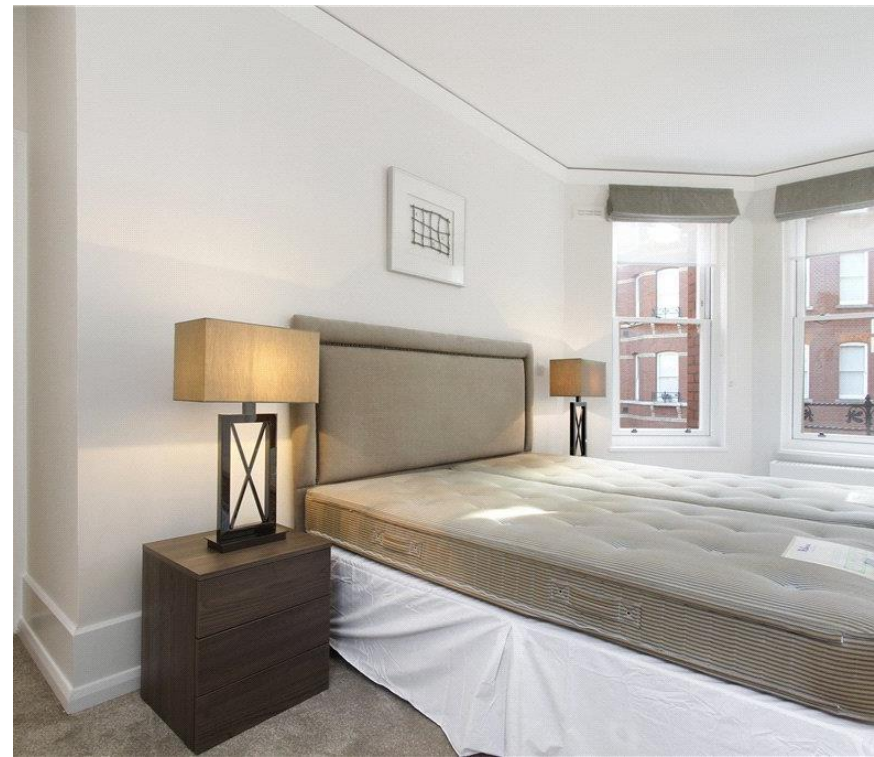


Description

A spacious third and fourth floor maisonette (with lift) in this well maintained building in the heart of Victoria. The property consists of one double bedroom with en suite bathroom, reception room and a fully fitted, open plan kitchen. Artillery Mansions is part period red brick mansion block and part new build and therefore has the modern advantages of 24 hour concierge, whilst still retaining its period grandeur. There is also allocated parking included in the rent.

As well as paying the rent, you may also be required to make permitted payments. Please visit jll.co.uk/fees for details of fees which may be payable when renting a property. If your tenancy does not qualify as an AST, additional fees may apply.

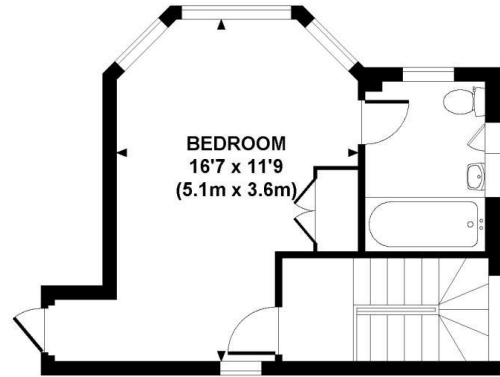
- Double bedroom
- Bathroom
- Reception room
- Open plan kitchen
- Allocated parking
- 24 Hour concierge
- Approx. 575 sq ft (53 sq m)
- Furnished
- EPC: D



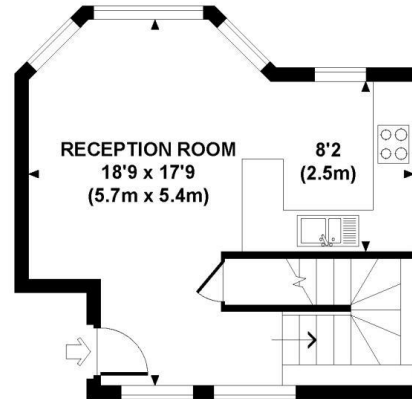
Floorplan

575 sq ft | 53 sq m

Approx. gross internal area
575 Sq Ft / 53 Sq M.



FOURTH FLOOR



THIRD FLOOR



Every attempt has been made to ensure the accuracy of this floor plan however, measurements are approximate and for discussion purposes only. Not to scale. Photography, floor plans & brochures © 2011 Dowling Jones Design Ltd. www.dowlingjonesdesign.com. 020 7618 9833 / 07789 914 289

Westminster
31 Palmer Street,
Westminster SW1H 0NP
+4420 7306 1630
westminster@eu.jll.com

Urban living, your way.

jll.co.uk/residential

© 2019 Jones Lang LaSalle IP, Inc. All rights reserved. All information contained herein is from sources deemed reliable; however, no representation or warranty is made to the accuracy thereof.

