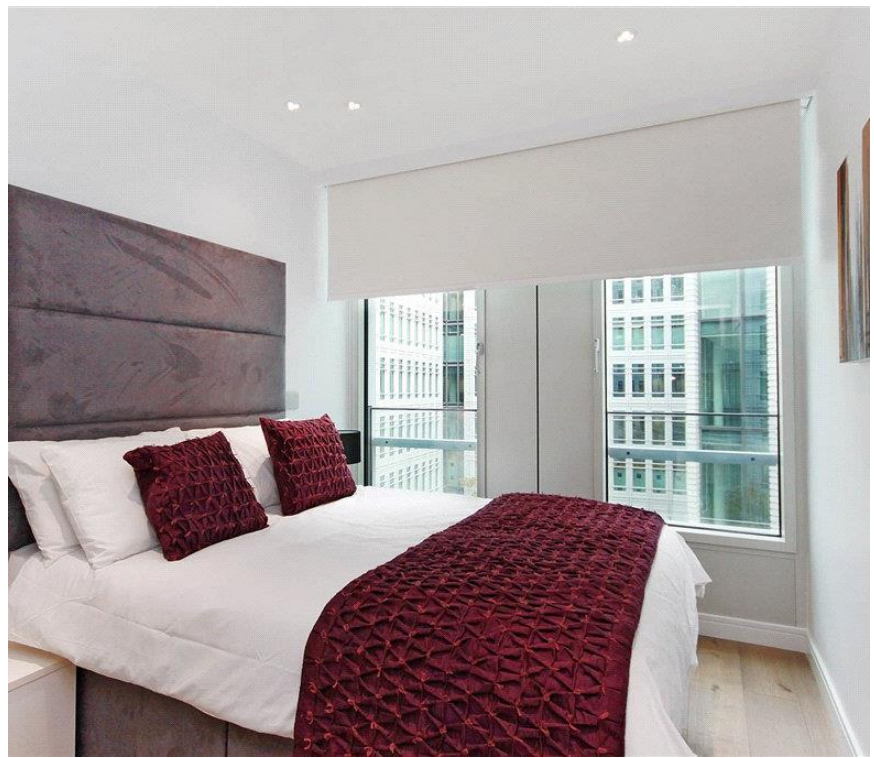




Central St Giles Piazza, London WC2H

Price £515 per week - Furnished





Description

A stunning fourth floor flat (with lift) in this award winning development in Central St Giles. The property consists of one double bedroom, one shower room, reception room and a fully fitted, open plan kitchen. Further benefits include wooden flooring, comfort cooling and 24 hour concierge. Central St Giles is conveniently located for the excellent shops, restaurants and transport facilities of Covent Garden, Tottenham Court Road and Holborn.

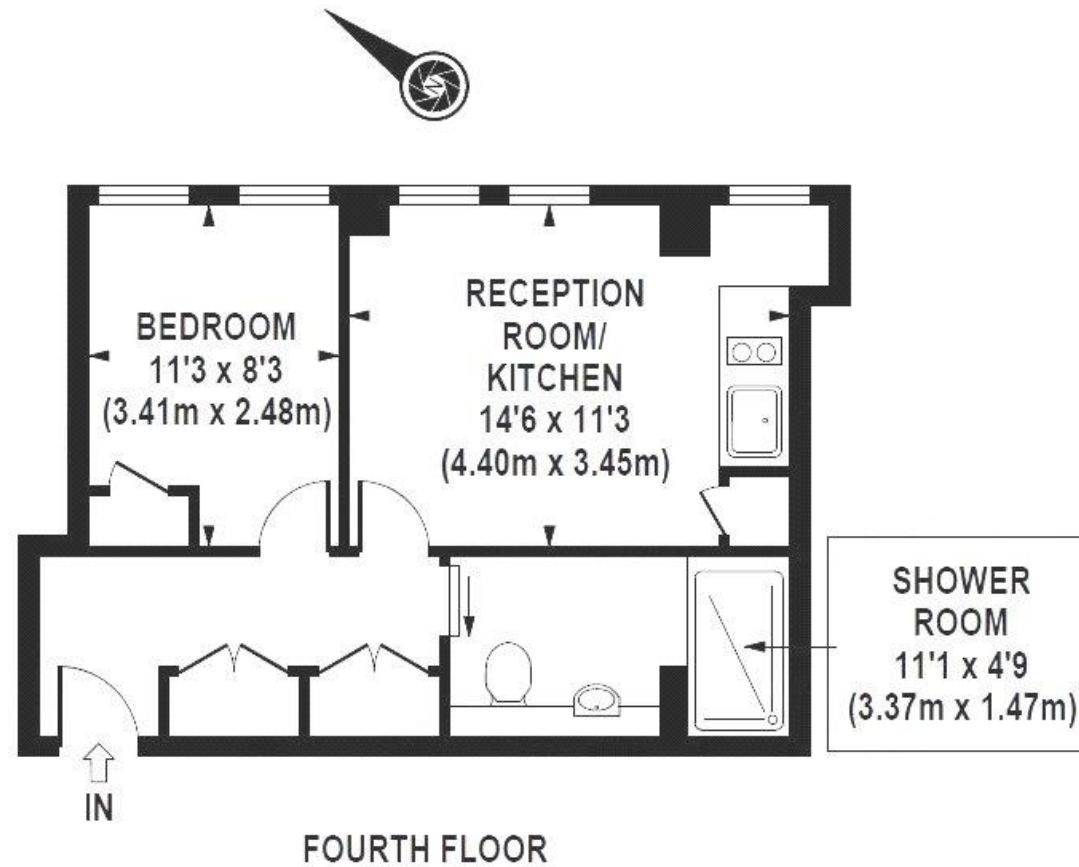
As well as paying the rent, you may also be required to make permitted payments. Please visit jll.co.uk/fees for details of fees which may be payable when renting a property. If your tenancy does not qualify as an AST, additional fees may apply.

- 1 Double bedroom
- 1 Shower room
- Reception room
- Open plan kitchen
- Fourth floor
- Lift
- 24 Hour concierge
- Approx. 412 sq ft (38 sq m)
- Furnished
- EPC: C



Floorplan

412 sq ft | 38 sq m



APPROX. GROSS INTERNAL AREA 412 sq.ft / 38.27 sq.m

Mayfair and Marylebone
JLL, 30 Warwick Street,
London W1B 5NH

Urban living, your way.

jll.co.uk/residential

© 2019 Jones Lang LaSalle IP, Inc. All rights reserved. All information contained herein is from sources deemed reliable; however, no representation or warranty is made to the accuracy thereof.

