



Portman Street, London W1H

Price £460 per week - Furnished



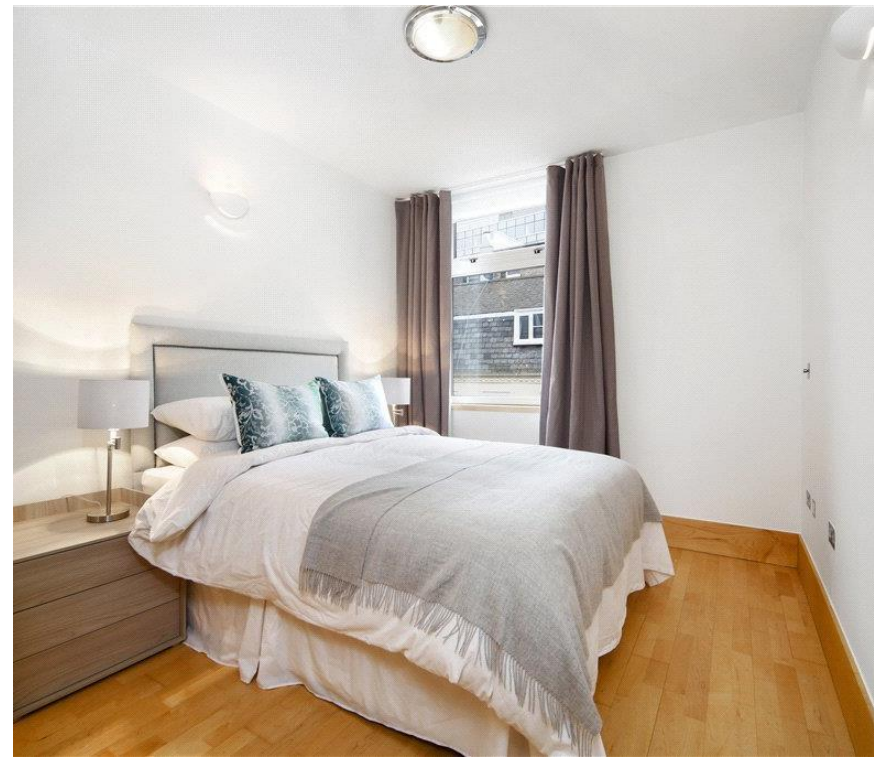


Description

A spacious and well presented second floor flat (no lift) in this well maintained building just north of Oxford Street. The property comprises one double bedroom, one bathroom, reception room and a fully fitted, open plan kitchen. Further benefits include wooden flooring, air conditioning and double glazing throughout. Portman Street is conveniently located moments from Oxford Street, with Bond Street and Marble Arch tube stations just a short walk away.

As well as paying the rent, you may also be required to make any applicable permitted payments. If your tenancy does not qualify as an AST, additional fees may apply. Please visit jll.co.uk/fees for details of fees which may be payable when renting a property.

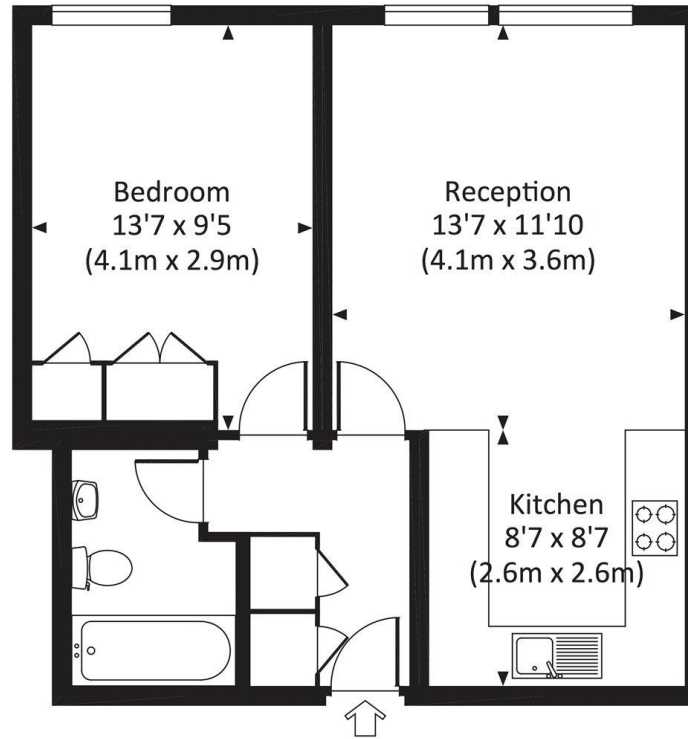
- 1 Double bedroom
- 1 Bathroom
- Reception room
- Open plan kitchen
- Second floor
- Air conditioning
- Wooden flooring
- Approx. 474 sq ft (44 sq m)
- Furnished
- EPC: D



Floorplan

474 sq ft | 44 sq m

Approx. gross internal area
474 Sq Ft. / 44.0 Sq M.



SECOND FLOOR

dpd All measurements have been made in accordance with RICS Code of Measuring Practice which are approximate only and only for illustrative purposes. For the avoidance of doubt, Dowling Jones Design shall not be liable for any reliance on these measurements. © 2015 www.dowlingjones.com 020 7610 9933

Mayfair and Marylebone
JLL, 30 Warwick Street,
London W1B 5NH

Urban living, your way.

jll.co.uk/residential

© 2019 Jones Lang LaSalle IP, Inc. All rights reserved. All information contained herein is from sources deemed reliable; however, no representation or warranty is made to the accuracy thereof.

