



## Picton Place, London W1U

Price £550 per week - Furnished





# Description

An elegant raised ground floor flat in this new development in the heart of Marylebone. The property comprises one double bedroom, one bathroom, reception room and a fully fitted, open plan kitchen. Further benefits include oak flooring in the reception room, Miele kitchen appliances, CCTV security, a concierge and cycle storage in the basement. The clean, contemporary interiors have been designed with the highest specification, whilst its beautiful 1930s redbrick façade, sash windows and colonnade detailing have been brought back to life.

As well as paying the rent, you may also be required to make permitted payments. Please visit [jll.co.uk/fees](http://jll.co.uk/fees) for details of fees which may be payable when renting a property. If your tenancy does not qualify as an AST, additional fees may apply.

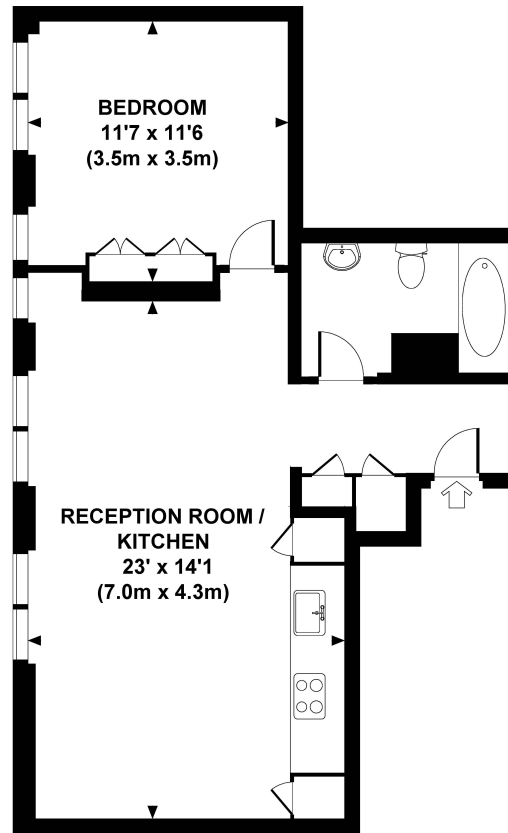
- 1 Double bedroom
- 1 Bathroom
- Reception room
- Open plan kitchen
- Raised ground floor
- Concierge
- Cycle storage
- Approx. 554 sq ft (51 sq m)
- Furnished
- EPC: C



# Floorplan

554 sq ft | 52 sq m

Approx. gross internal area  
554 Sq.Ft. / 51.5 Sq.M.



GROUND FLOOR

ESP All measurements are approximate and for illustration purposes only as defined by the RICS Code of Measuring Practice © 2013. Dowling Jones Design www.dowlingjones.com 020 7610 9933

Mayfair and Marylebone  
JLL, 30 Warwick Street,  
London W1B 5NH

*Urban living, your way.*

[jll.co.uk/residential](http://jll.co.uk/residential)

© 2019 Jones Lang LaSalle IP, Inc. All rights reserved. All information contained herein is from sources deemed reliable; however, no representation or warranty is made to the accuracy thereof.

