



Charles Street, London W1J

Price £1,000 per week - Furnished





Description

A bright and spacious fourth floor flat (with lift) located in a period building in the heart of Mayfair. The property comprises one double bedroom with en suite bathroom, large reception room with open plan kitchen and a guest cloakroom. Charles Street is located within walking distance of Park Lane, Hyde Park and Green Park underground station, as well as the luxurious shops and restaurants that Mayfair has to offer.

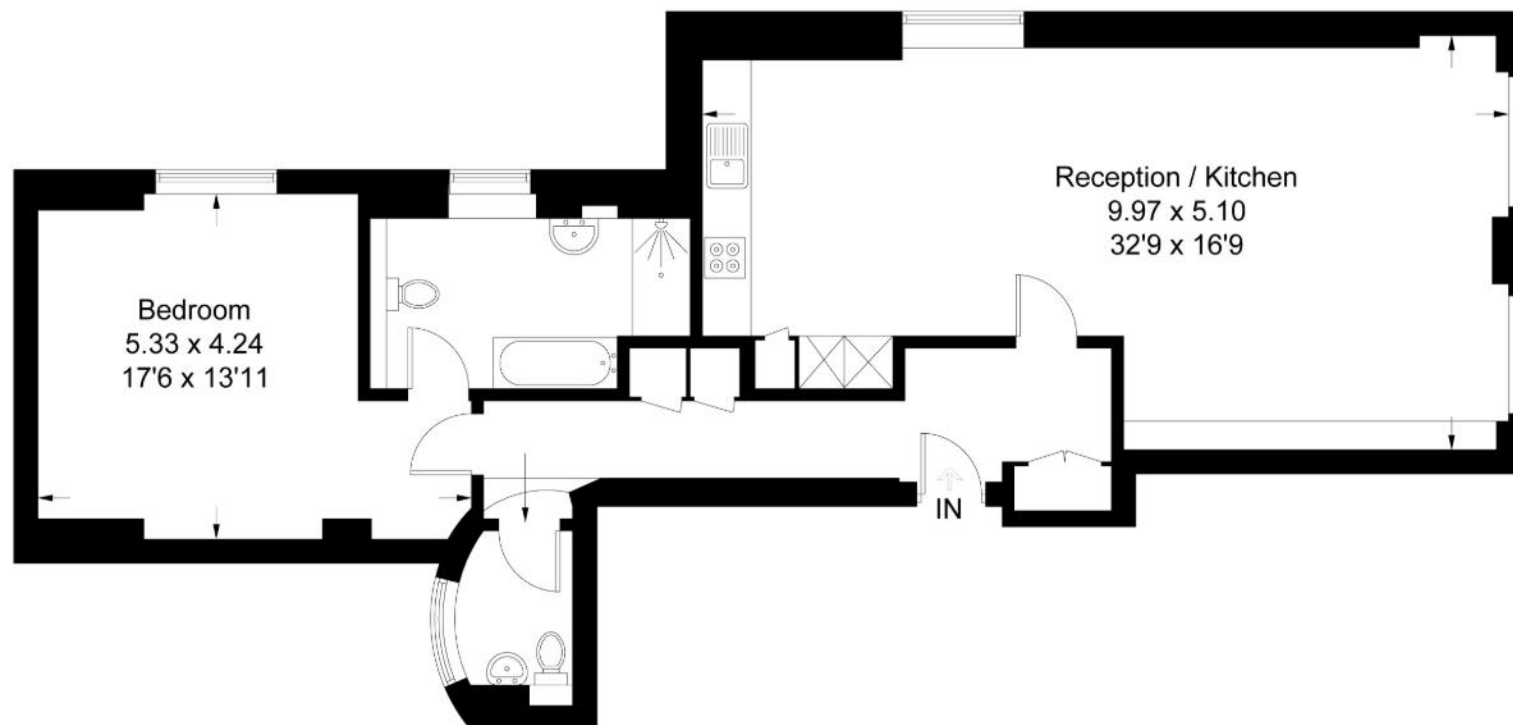
As well as paying the rent, you may also be required to make permitted payments. Please visit jll.co.uk/fees for details of fees which may be payable when renting a property. If your tenancy does not qualify as an AST, additional fees may apply.

- One double bedroom with en suite bathroom
- Large reception room with open plan kitchen
- Guest cloakroom
- Fourth floor
- Lift
- Furnished
- Approx. 962 sq ft (89 sq m)
- EPC: C



Charles Street, W1J

Approximate Gross Internal Area = 89.4 sq m / 962 sq ft



Fourth Floor

Illustration for identification purposes only, measurements are approximate, not to scale. FloorplansUsketch.com © 2015 (ID197347)