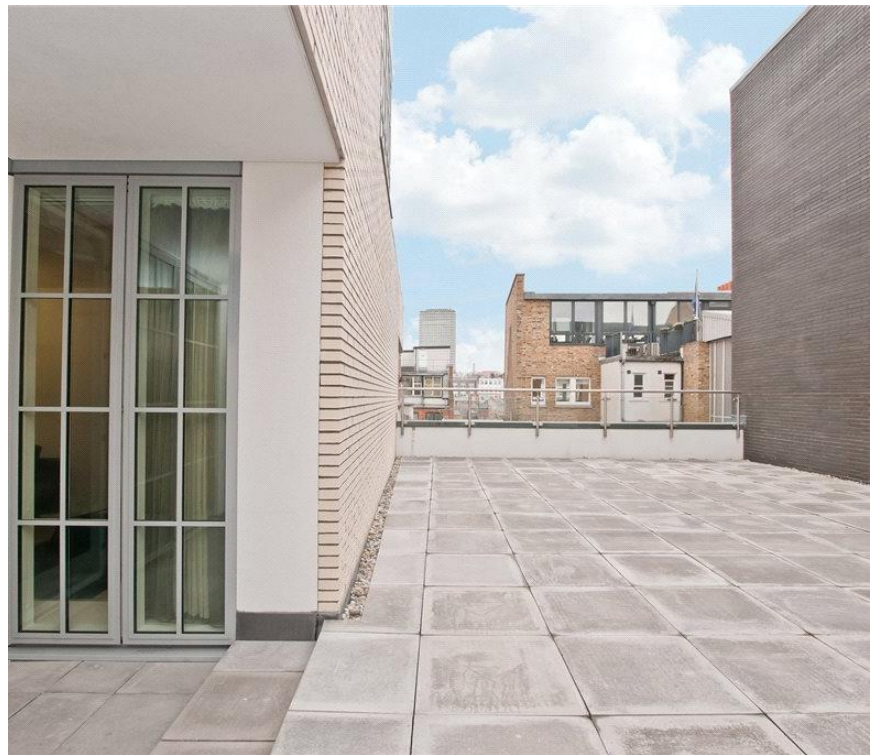




Marshall Street, London W1F

Price £550 per week - Furnished



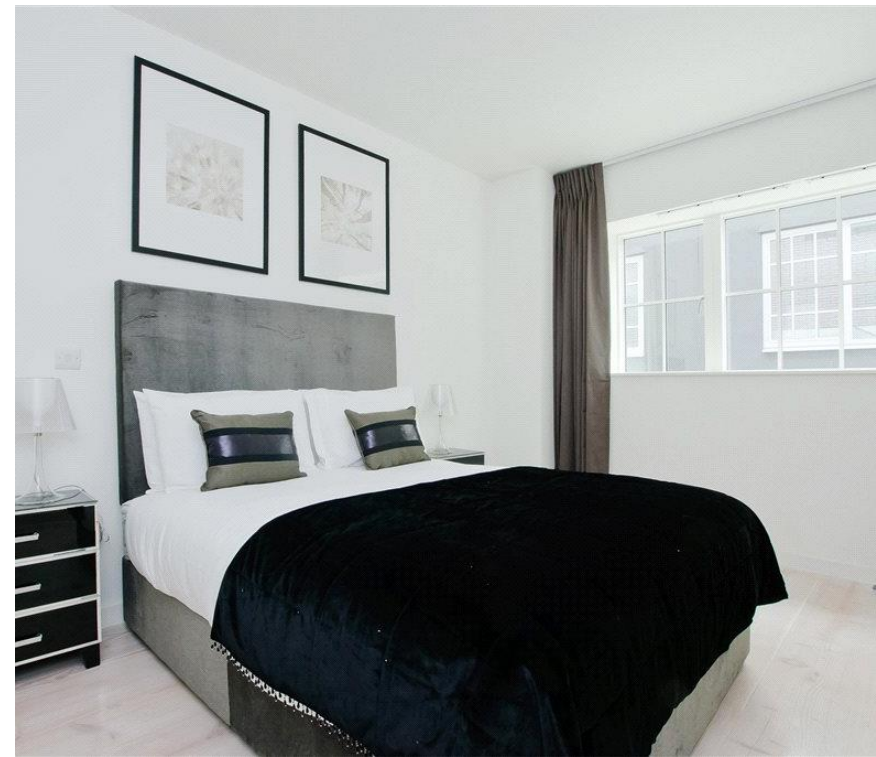


Description

A wonderful fourth floor flat (with lift) in this quiet and sought after courtyard development with 24 hour concierge. The property consists of one double bedroom, one bathroom, reception room and a fully fitted, open plan kitchen. Further benefits include wooden flooring throughout and a shared patio. The flat is conveniently located moment from the transport and shopping amenities of Oxford Circus and Piccadilly Circus.

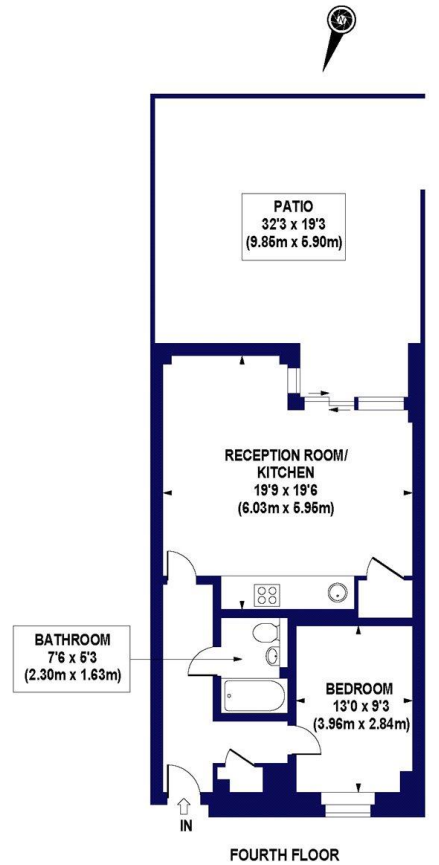
As well as paying the rent, you may also be required to make any applicable permitted payments. If your tenancy does not qualify as an AST, additional fees may apply. Please visit jll.co.uk/fees for details of fees which may be payable when renting a property.

- 1 Double bedroom
- 1 Bathroom
- Reception room
- Fully fitted kitchen
- Fourth floor
- Shared patio
- Lift
- 24 Hour concierge
- Approx. 634 sq ft (59 sq m)
- Furnished



Floorplan

634 sq ft | 59 sq m



APPROX. GROSS INTERNAL AREA 634 sq.ft / 59 sq.m

COMPLIANT WITH RICS CODE OF MEASURING PRACTICE Floorplan is for illustrative purposes only and is not to scale. Every attempt has been made to ensure the accuracy of the floorplan shown, however all measurements, fixtures, fittings and data shown are an approximate interpretation for illustrative purposes only. Liability for errors, omissions or mis-statement through negligence or otherwise is hereby excluded.

CP | CREATIVE
Property Marketing

Mayfair and Marylebone
JLL, 30 Warwick Street,
London W1B 5NH

Urban living, your way.

jll.co.uk/residential

© 2019 Jones Lang LaSalle IP, Inc. All rights reserved. All information contained herein is from sources deemed reliable; however, no representation or warranty is made to the accuracy thereof.

