



New Bond Street, London W1S

Price £1,095 per week - Furnished





Description

A stunning first floor flat (no lift) in this period building on New Bond Street. The property consists of two double bedrooms with en suite bathrooms, guest cloakroom, a spacious reception room and a fully fitted, eat-in kitchen. The flat has been finished to an excellent standard and further benefits from wooden flooring throughout. New Bond Street is conveniently located moments from the shopping and transport amenities of Bond Street and Oxford Circus.

As well as paying the rent, you may also be required to make any applicable permitted payments. If your tenancy does not qualify as an AST, additional fees may apply. Please visit jll.co.uk/fees for details of fees which may be payable when renting a property.

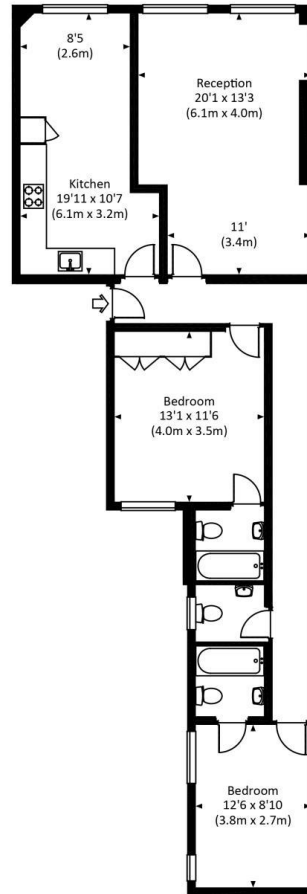
- 2 Double bedrooms
- 2 Bathrooms (en suite)
- Guest cloakroom
- Reception room
- Eat-in kitchen
- First floor
- Approx. 975 sq ft (90 sq m)
- Furnished
- EPC: C



Floorplan

1,000 sq ft | 93 sq m

Approx. gross internal area
975 Sq Ft. / 90.6 Sq M.



FIRST FLOOR



All measurements are approximate and for illustration purposes only as defined by theRICS Code of Measuring Practice © 2015 Dowling Jones Design www.dowlingjones.com 020 7610 9933

Mayfair and Marylebone
JLL, 30 Warwick Street,
London W1B 5NH

Urban living, your way.

jll.co.uk/residential

© 2019 Jones Lang LaSalle IP, Inc. All rights reserved. All information contained herein is from sources deemed reliable; however, no representation or warranty is made to the accuracy thereof.

