



Duke Street, London W1K

Price £1,800 per week - Furnished, Part Furnished, Unfurnished



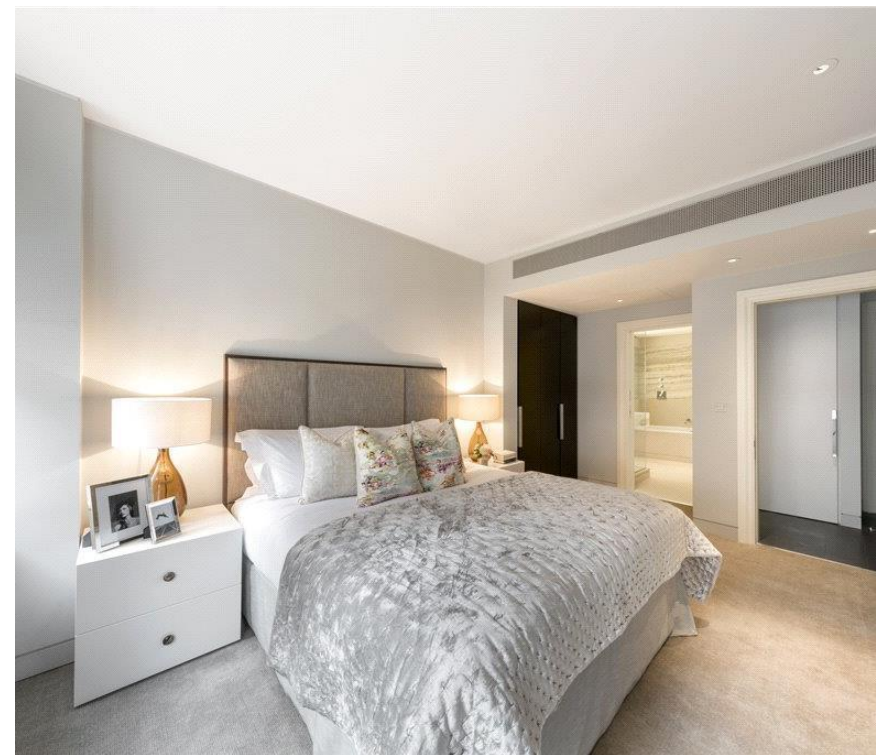
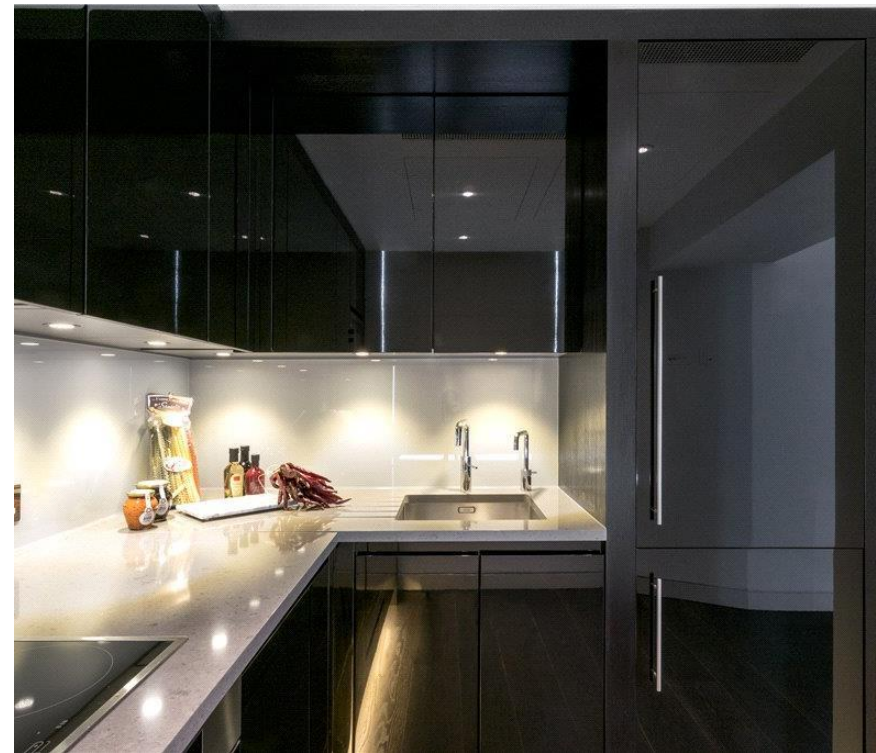


Description

A stylishly refurbished second floor apartment (with lift) in this prestigious development located in north Mayfair. The property consists of one double bedroom with en suite bathroom, guest cloakroom, a large reception room with dining area and a modern, fully fitted kitchen. The apartment has been decorated and finished to the highest of standards and further benefits include wooden flooring in the reception room, comfort cooling and on site concierge service. The development is conveniently located for the shops, restaurants and many amenities of Bond Street and Oxford Street as well as the green spaces of Grosvenor Square and Hyde Park.

As well as paying the rent, you may also be required to make permitted payments. Please visit jll.co.uk/fees for details of fees which may be payable when renting a property. If your tenancy does not qualify as an AST, additional fees may apply.

- 1 Double bedroom
- 1 Bathroom (en suite)
- Guest cloakroom
- Reception room
- Fully fitted kitchen
- Utility room
- Second floor
- Terrace
- Lift
- Concierge



Floorplan

969 sq ft | 90 sq m



SECOND FLOOR

APPROX. GROSS INTERNAL AREA *
969 Ft² - 90.02 M²

Property Details:

FLAT 2.03
65 DUKE STREET
W1

Surveyed and Drawn By:



Sunnyhill House
3-7 Sunnyhill Road
London, SW16 2UG

Tel: 0845 257 2023
Fax: 0845 257 2024
info@bkrfloorplans.co.uk
www.bkrfloorplans.co.uk

© BKR 2016

Plans Drawn: 13.05.2016

Mayfair and Marylebone
JLL, 30 Warwick Street,
London W1B 5NH

Urban living, your way.

jll.co.uk/residential

© 2019 Jones Lang LaSalle IP, Inc. All rights reserved. All information contained herein is from sources deemed reliable; however, no representation or warranty is made to the accuracy thereof.

