



## New Cavendish Street, London W1G

Price £725 per week - Furnished, Unfurnished





# Description

A delightful apartment situated in the popular Crofton House in Marylebone. The apartment comprises three double bedrooms, one shower room, reception room, separate kitchen and balcony. Crofton House is located on New Cavendish Street, a wonderful central London location close to Marylebone Village, Regents Park and Mayfair.

Having your property professionally managed by The Howard de Walden Estate not only offers exceptional levels of service and high quality, professional property management. Marylebone Village is one of central London's most distinctive and characterful shopping destinations, home to a high proportion of small, independent businesses. Residents of HDWE also benefit from access to an array of discounts within Marylebone Village, resident social opportunities and local events which make Marylebone Village a unique and vibrant place to call home.

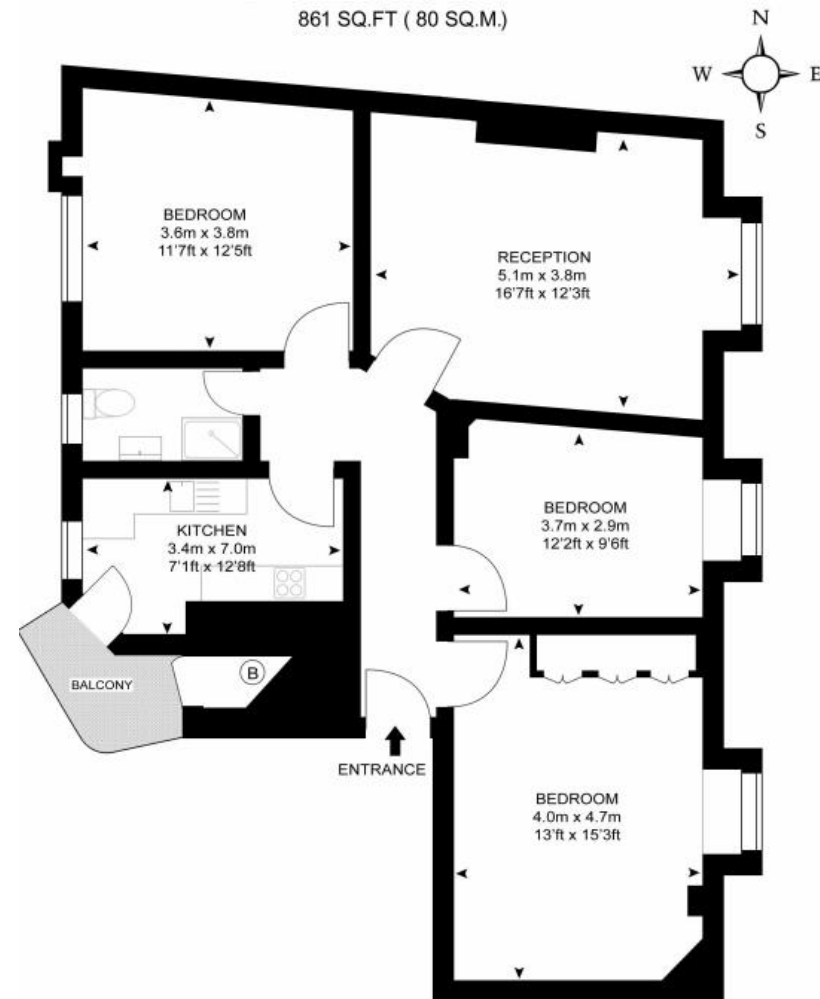
As well as paying the rent, you may also be required to make permitted payments. Please visit [jll.co.uk/fees](http://jll.co.uk/fees) for details of fees which may be payable when renting a property. If your tenancy does not qualify as an AST, additional fees may apply.

- Three double bedrooms
- One shower room
- Reception room
- Separate kitchen
- Balcony
- Unfurnished/furnished at additional cost
- Professional property management
- Eligibility for local discounts in Marylebone Village
- Wifi included
- Approx. 861 sq ft (80 sq m)



# Floorplan

861 sq ft | 80 sq m



As Defined by RICS - Code of Measuring Practice  
The Floor - plans are for representation purposes only and  
should be used as such by any prospective client.

Mayfair and Marylebone  
JLL, 30 Warwick Street,  
London W1B 5NH

*Urban living, your way.*

[jll.co.uk/residential](http://jll.co.uk/residential)

© 2019 Jones Lang LaSalle IP, Inc. All rights reserved. All information contained herein is from sources deemed reliable; however, no representation or warranty is made to the accuracy thereof.

