



47-53 Queen Anne Street, London W1G

Price £825 per week - Furnished, Unfurnished





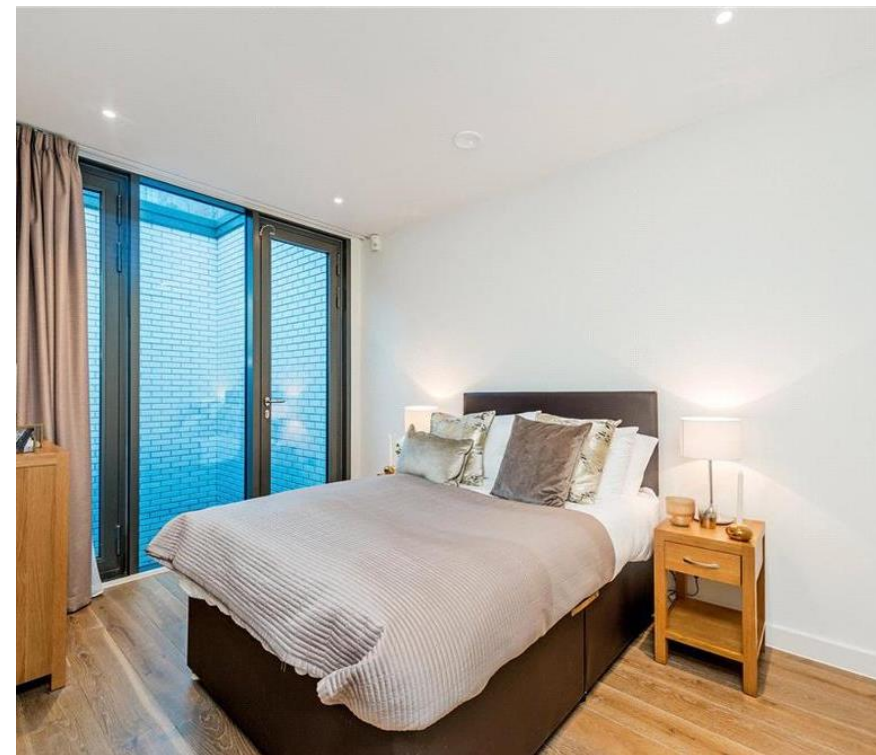
Description

A stylish 2nd floor 2 bedroom apartment in the heart of Marylebone. The property comprises of 1 master bedroom with shower room, 1 further bedroom, 1 family bathroom, open plan kitchen with dining/ reception room. The property is in a prime location close to Hyde Park, Regent's Park, Bond Street and Oxford Circus underground stations and a variety of shops and restaurants that Marylebone has to offer.

Having your property professionally managed by The Howard de Walden Estate not only offers exceptional levels of service and high quality, professional property management. Marylebone Village is one of central London's most distinctive and characterful shopping destinations, home to a high proportion of small, independent businesses. Residents of HDWE also benefit from access to an array of discounts within Marylebone Village, resident social opportunities and local events which make Marylebone Village a unique and vibrant place to call home.

As well as paying the rent, you may also be required to make permitted payments. Please visit jll.co.uk/fees for details of fees which may be payable when renting a property. If your tenancy does not qualify as an AST, additional fees may apply.

- 2 Double bedrooms (1 en suite)
- Open plan kitchen with dining/ reception room
- 1 Family bathroom
- 2nd Floor
- Unfurnished or Furnished with additional cost
- Professional property management
- Eligibility for local discounts in Marylebone Village
- Wifi included
- Approx: 908 sq ft (84 sq m)
- EPC: B



Floorplan

908 sq ft | 84 sq m



Mayfair and Marylebone
JLL, 30 Warwick Street,
London W1B 5NH

Urban living, your way.

jll.co.uk/residential

© 2019 Jones Lang LaSalle IP, Inc. All rights reserved. All information contained herein is from sources deemed reliable; however, no representation or warranty is made to the accuracy thereof.

