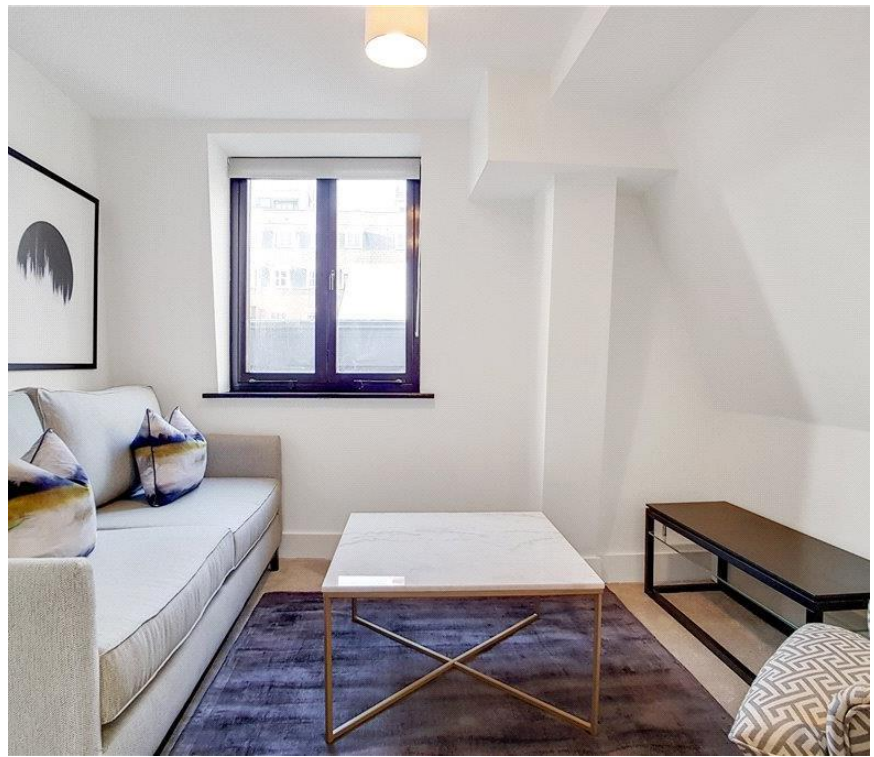




## Poland Street, London W1F

Price £485 per week - Furnished







# Description

A well presented fourth floor flat (with lift) in this excellent location in the heart of Soho. The property consists of one double bedroom, one bathroom, reception room and a fully fitted kitchen. The flat is light and bright and neutrally decorated throughout. Poland Street is ideally located to take advantage of the many shopping and transport facilities of the West End. As well as paying the rent, you may also be required to make any applicable permitted payments. If your tenancy does not qualify as an AST, additional fees may apply. Please visit [jll.co.uk/fees](http://jll.co.uk/fees) for details of fees which may be payable when renting a property.

- Double bedroom
- Bathroom
- Reception room
- Fully fitted kitchen
- Fourth floor
- Lift
- Approx. 375 sq ft (35 sq m)
- Furnished
- EPC: C

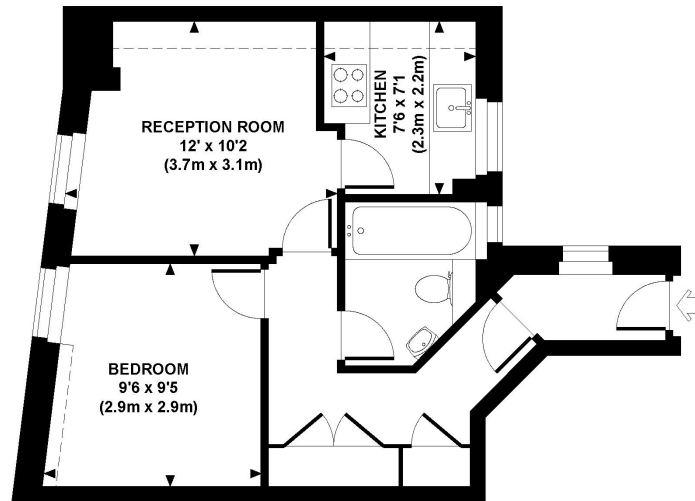


# Floorplan

375 sq ft | 35 sq m

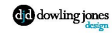
POLAND STREET, W1

Approx. gross internal area  
375 Sq Ft. / 35 Sq M.



FOURTH FLOOR

Every attempt has been made to ensure the accuracy of this floorplan however, measurements are approximate and for illustration purposes only. Not to scale.  
Photography, floorplan and brochure design by Dowling Jones Design www.dowlingjonesdesign.com 020 7386 1014 / 07793 974 209



Mayfair and Marylebone  
JLL, 30 Warwick Street,  
London W1B 5NH

*Urban living, your way.*

[jll.co.uk/residential](http://jll.co.uk/residential)

© 2019 Jones Lang LaSalle IP, Inc. All rights reserved. All information contained herein is from sources deemed reliable; however, no representation or warranty is made to the accuracy thereof.

