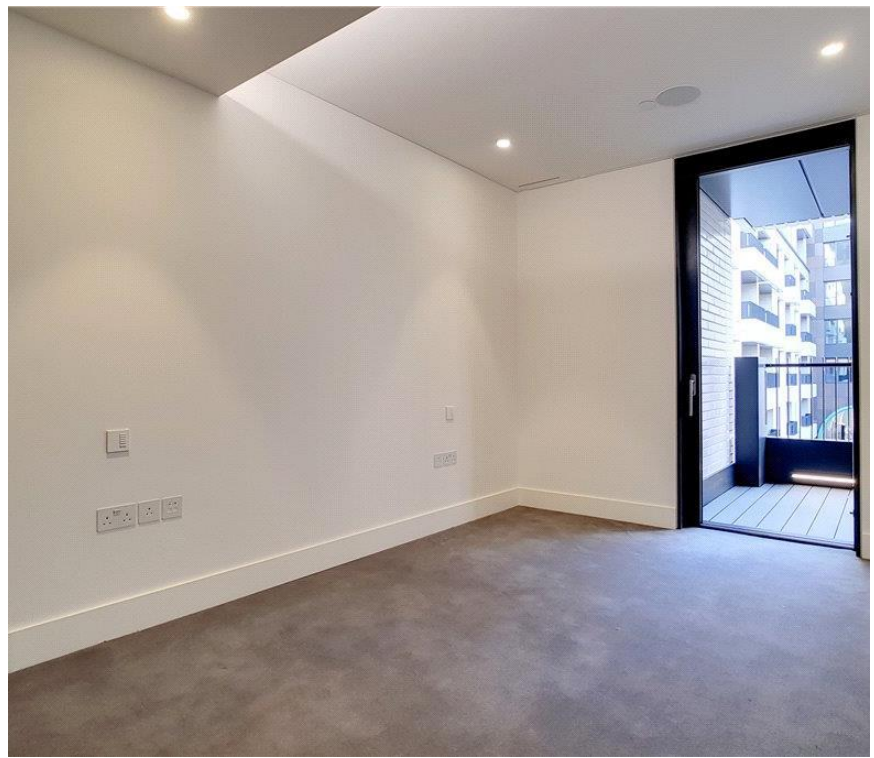




## Rathbone Square, London W1T

Price £1,350 per week - Unfurnished







# Description

A brand new and stunning apartment located in Great Portland Estates' new development. The property comprises master bedroom with en suite bathroom, second double bedroom, one shower room, reception room and a fully fitted, open plan kitchen and balcony. Residents will benefit from access to a 24 hour concierge, beautiful gardens, residents' lounge, wine storage and tasting room, screening room, gymnasium, swimming pool, sauna and steam room. Rathbone Square has been designed to offer a tranquil environment, whilst being ideally located moments from Oxford Street. Situated in the heart of London's West End, ideal for transport links in and around London, with The City and West London being just 10 minutes away via the underground.

\*CGI's indicative of development.

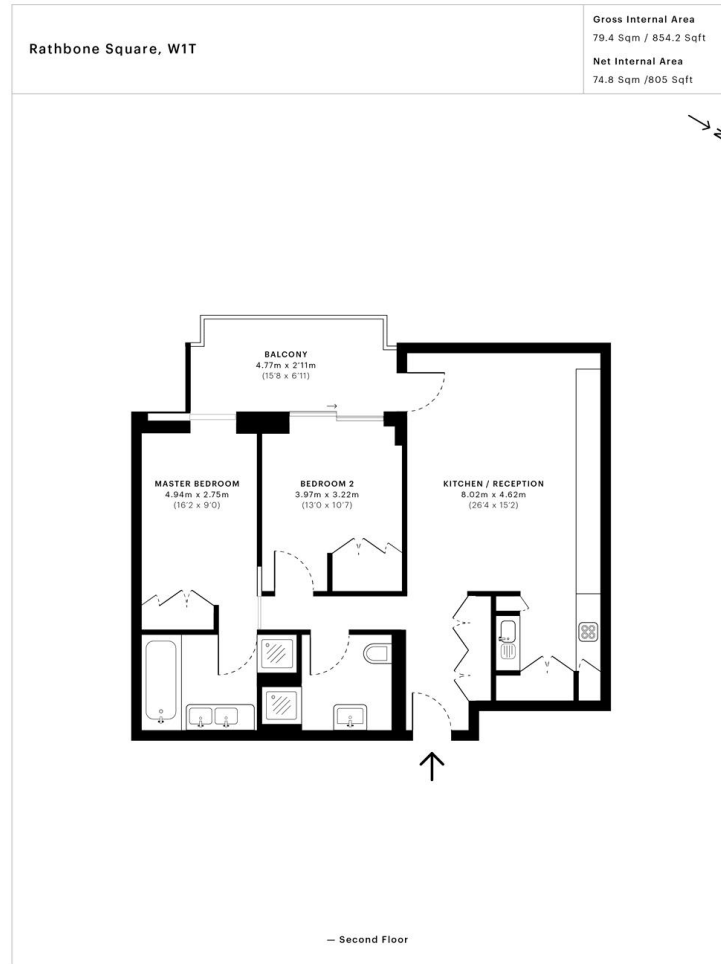
As well as paying the rent, you may also be required to make permitted payments. Please visit [jll.co.uk/fees](http://jll.co.uk/fees) for details of fees which may be payable when renting a property. If your tenancy does not qualify as an AST, additional fees may apply.

- 2 Double bedrooms
- 1 Bathroom (en suite)
- 1 Shower room
- Reception room
- Fully fitted kitchen
- Terrace
- Concierge
- Swimming pool
- Gym
- Sauna



# Floorplan

sq ft | sq m



This floorplan was captured for JLL, Knightsbridge on 15/02/2018. Architectural features to scale, derived from millions of laser scan points, accurate to +/- 3cm and produced in accordance with the Royal Institute of Chartered Surveyors Code of Measuring Practice. Gross Internal Area is measured from the internal faces of external walls and includes internal walls/obstructions. Net Internal Area excludes internal walls/obstructions. Please perform your own checks before relying on these figures in any transaction.



Mayfair and Marylebone  
JLL, 30 Warwick Street,  
London W1B 5NH  
+44 207 399 5550  
tenancymanagement@eu.jll.c

*Urban living, your way.*

[jll.co.uk/residential](http://jll.co.uk/residential)

© 2019 Jones Lang LaSalle IP, Inc. All rights reserved. All information contained herein is from sources deemed reliable; however, no representation or warranty is made to the accuracy thereof.

