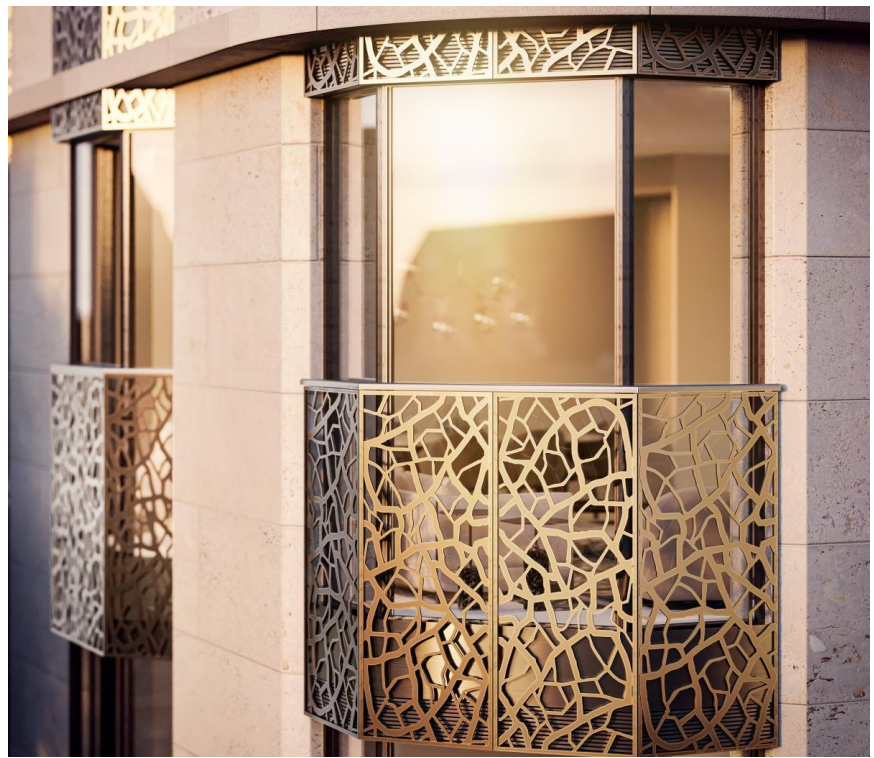




Great Portland Street, London W1W

Guide price £1,591,000 Leasehold





Description

W1 Place is the epitome of modern living in Marylebone. This exceptional two-bedroom apartment on the 7th floor offers a lateral layout that exudes spaciousness and elegance.

With 634 sq ft of thoughtfully designed living space, this residence caters to your every need. The principal bedroom boasts an en suite bathroom and a long row of built-in wardrobes, adding a touch of luxury and organization. You'll also find a delightful bay window that fills the room with light and charm.

The heart of this exquisite apartment lies in its open-plan kitchen, living, and dining room area, fostering connectivity and modernity. The bay window in the living area frames picturesque views, creating an ideal warm homely feel.

The exclusive 37 unit development will include a selection of one, two and three bedroom luxury residences with South, West and East Facing views. All apartments come with generously proportioned open plan living and kitchen areas framed by the floor-to-ceiling bay windows, ensuring a wealth of natural light and a view over the famed London Street.

The exterior boasts a bright, natural limestone façade coupled with bronze-coloured French windows. Inspired by the distinctive glaze of Japanese porcelain, the building's balustrades introduce additional artistic flair.

* Computer generated images and photography are intended for illustrative purposes only and should be treated as general guidance only.

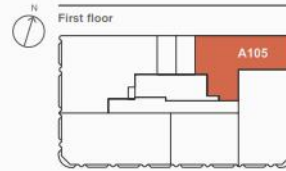
- Natural stone walls façade
- Triple glazed floor to ceiling bay windows
- Juliette balconies with bespoke cast aluminium balustrades
- Solid Timber floors
- High quality kitchens, bathrooms and joinery
- Built-in wardrobes in hallways and bedrooms, vanity units to bathrooms
- KNX Home automation system controlling lights and air conditioning

Floorplan

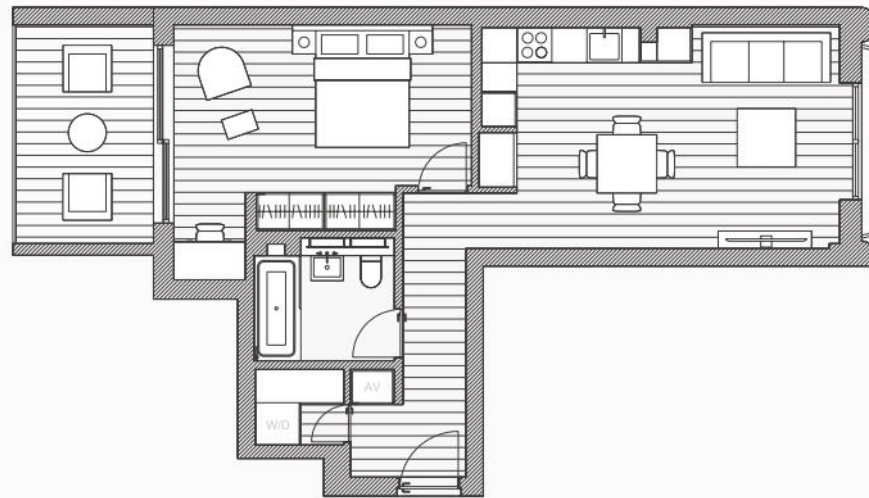
634 sq ft | 59 sq m

Apartment A105 1 bedroom

W1 PLACE
LONDON



Living/Kitchen/Dining	6.1m x 3.8m
Master Bedroom	5.1m x 3.5m
Bathroom	2.4m x 1.8m
Total	59m²
	634sqft
Terrace	9.1m²
	98sqft



Mayfair and Marylebone
13a St George Street,
London W1S 2FQ
+44 207 399 5550

Urban living, your way.

jll.co.uk/residential

© 2019 Jones Lang LaSalle IP, Inc. All rights reserved. All information contained herein is from sources deemed reliable; however, no representation or warranty is made to the accuracy thereof.

