

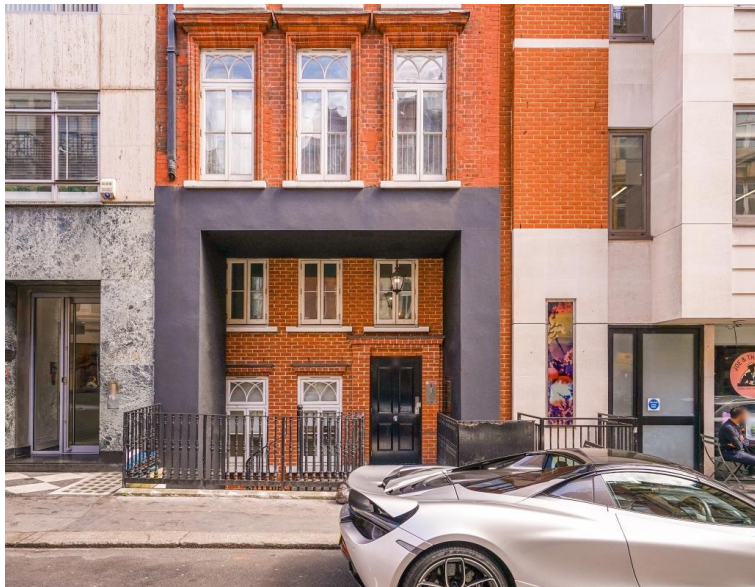


Maddox Street, London W1S

Guide price £1,100,000 Leasehold







Description

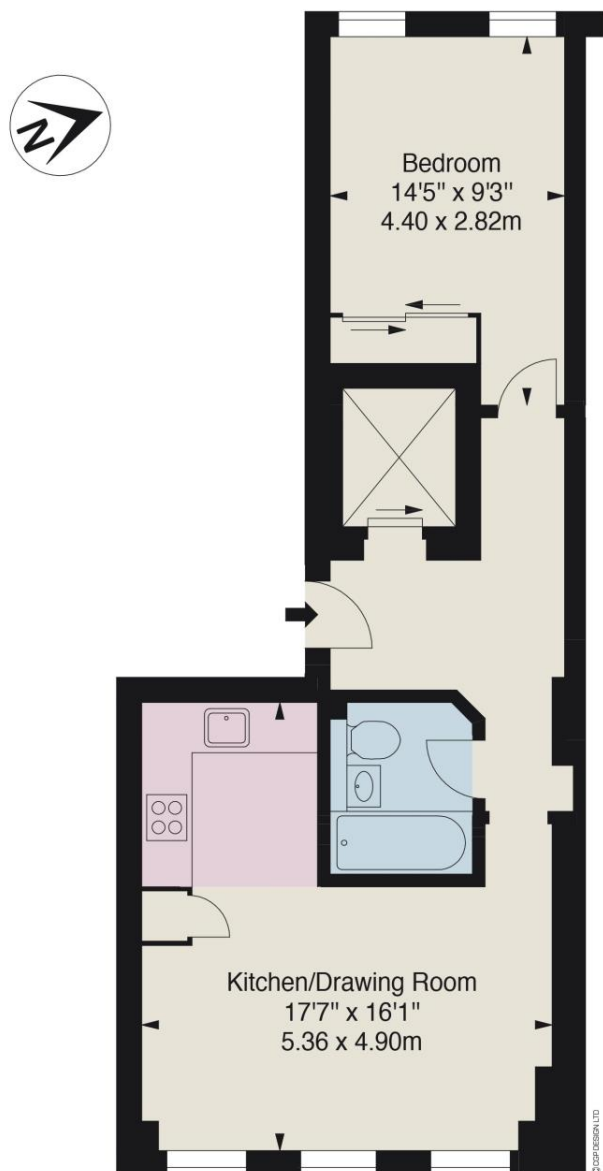
Maddox Street is located between Regent Street and New Bond Street, benefiting from the exceptional facilities of Mayfair, Soho and Oxford Street and the transport links of Oxford Circus and Bond Street tube stations. The flat is on the first floor mezzanine, with direct lift access.

Floorplan

505 sq ft | 47 sq m

Flat 2, 21 Maddox Street, W1F

APPROX. GROSS INTERNAL AREA *
505 Ft² - 46.97 M²
(Excluding Lift)



FIRST FLOOR

Mayfair and Marylebone
13a St George Street,
London W1S 2FQ
+44 207 399 5550
mayfair@jll.com

Urban living, your way.

jll.co.uk/residential

© 2019 Jones Lang LaSalle IP, Inc. All rights reserved. All information contained herein is from sources deemed reliable; however, no representation or warranty is made to the accuracy thereof.

