

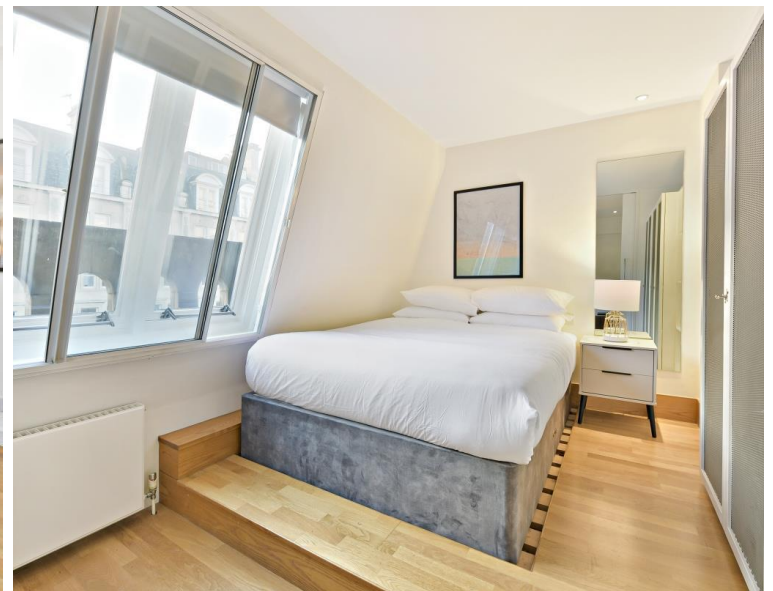


## Piccadilly, London W1J

Price £750 per week - Furnished









## Description

A unique fourth floor flat with lift access located on Piccadilly, close to Bond Street. The property consists of a spacious reception room with dining area, a separate fully fitted kitchen, a double bedroom, and a bathroom with bath and shower. The flat has been decorated and furnished in a contemporary style with imaginative and excellent use of space. Colette House is situated in an excellent location on Piccadilly, close to the fantastic shops, restaurants, and transport links that the area has to offer.

We understand that cooling / heating is delivered via a communal system for which separate charges apply.

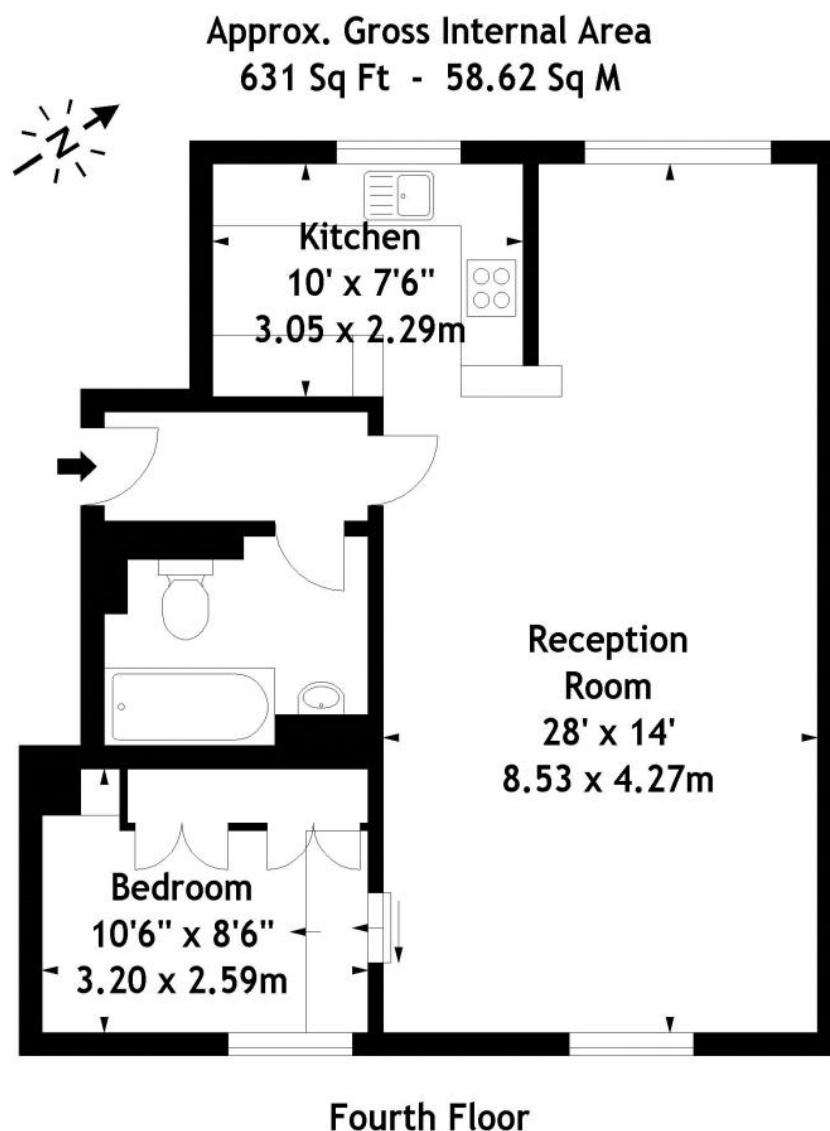
Rent is payable on a monthly basis and you may be required to pay more than a month's rent in advance, depending on your circumstances. You will be required to pay a 1 week holding deposit following a successful offer. Utility bills, council tax, telephone line and broadband are not included in the rent. As well as paying the rent, you may also be required to make some additional permitted payments. If your tenancy does not qualify as an AST, additional fees may apply. Please visit [jll.co.uk/fees](http://jll.co.uk/fees) for details of fees which may be payable when renting a property.

- Modern Apartment
- Spacious Reception and Dining Area
- Separate Kitchen
- Furnished
- Wooden Flooring
- Approx. 59sqm / 631sqft
- Lift Access
- Amazing Location
- Council tax: Band G
- Deposit amount: £3,750.00 (estimate) and an initial holding deposit of 1 week's rent is payable to



# Floorplan

631 sq ft | 59 sq m



Measured in accordance with RICS guidelines. Every attempt is made to ensure accuracy, however all measurements are approximate. This floor plan is for illustrative purposes only and is not to scale.