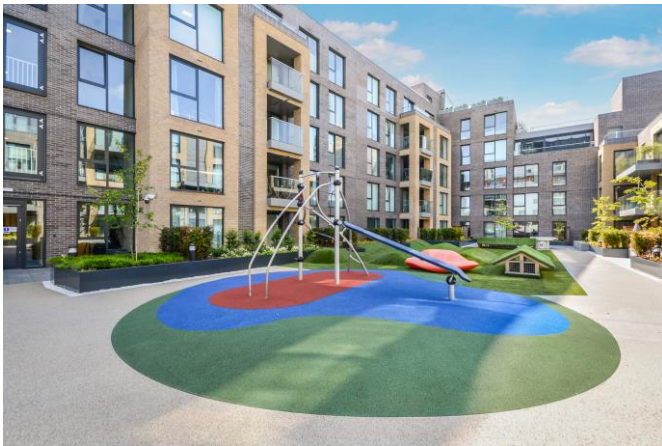




**THE TAPER BUILDING, LONG LANE,
LONDON SE1**





A well-presented two bedroom apartment in the Taper Building, located in the very heart of Bermondsey, Zone 1's creative hub.

This luxury apartment comprises two double bedrooms with fitted wardrobes to master, large reception area with fully fitted open plan kitchen, two balconies, contemporary bathroom, wood flooring and excellent storage.

The property boasts a high specification with comfort cooling and the development benefits from concierge, resident's gym and communal courtyard. London Bridge station is just 0.3 miles away, with both Overground, Northern line and Jubilee line services.

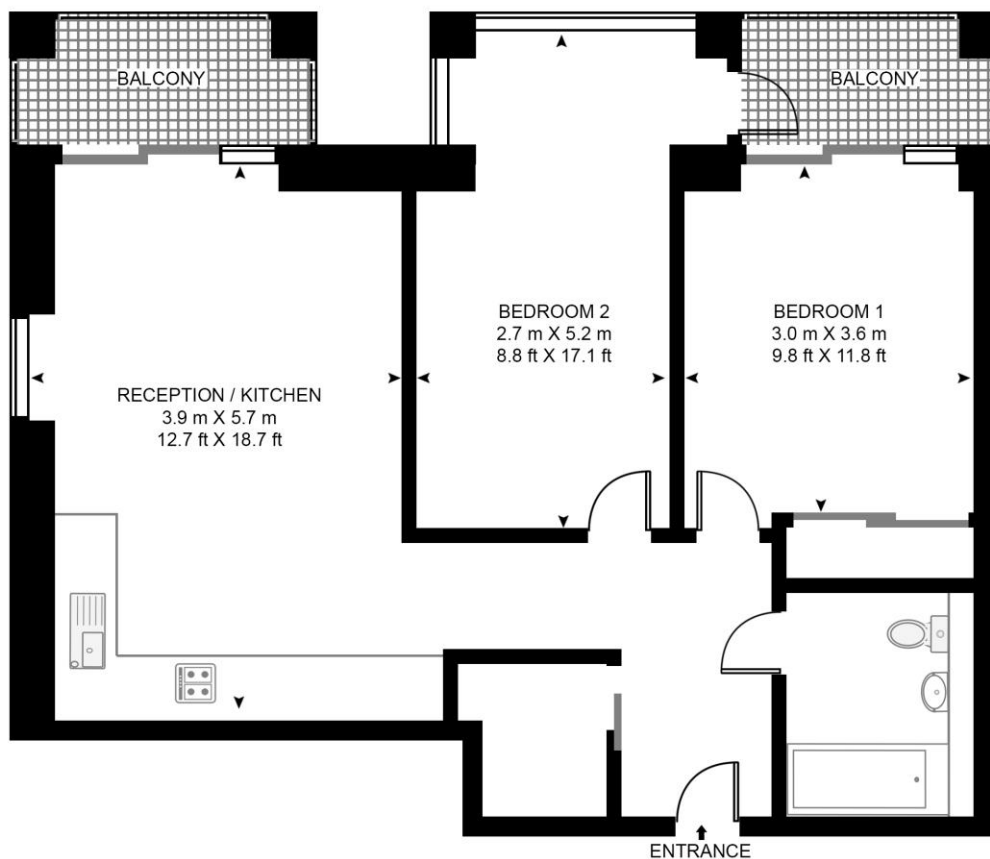
- 2 Bedrooms
- 1 Bathroom
- 2 Balconies
- Open plan kitchen / reception room
- 24 Hour concierge
- Resident's gym
- 0.3 miles from London Bridge Station
- Leasehold
- EPC: B

PRICE
OIEO £600,000

GROSS INTERNAL AREA
652 sq ft (60.6 sq m)

THE TAPER BUILDING, LONG LANE

APPROXIMATE GROSS INTERNAL FLOOR AREA 652 SQ.FT (60.6 SQ.M)



FIRST FLOOR

HDVA

This floor plan has been defined by the RICS Code of Measurement. This floor plan and all others are for approximate representative purposes only and upon usage is agreed to as such by the client.

WWW: hdvirtualart.com | TEL: 0203.974.1567 | EMAIL: info@hdvirtualart.com

The Walbrook Building
25 Walbrook
London
EC4N 8AF

These particulars are for general information only and do not constitute any part of an offer or contract. All statements contained therein are made without responsibility on the part of the vendors or lessors and are not to be relied upon as statement or representation of fact. Intending purchasers or lessees must satisfy themselves, by inspection, or otherwise, as to the correctness of each of the statements or dimensions contained in these particulars..