



Brock Street, London NW1

Guide price £700,000 Leasehold





Description

A stunning thirteenth floor flat (with lift) in this development on Brock Street.

The property consists of one double bedroom, one bathroom, open plan reception room which opens onto a fully fitted kitchen.

The building is conveniently located moments from the transport amenities of Warren Street and the open spaces of Regent's Park and also benefits from no onward chain and 24 hour concierge.

Early viewings are highly recommended.

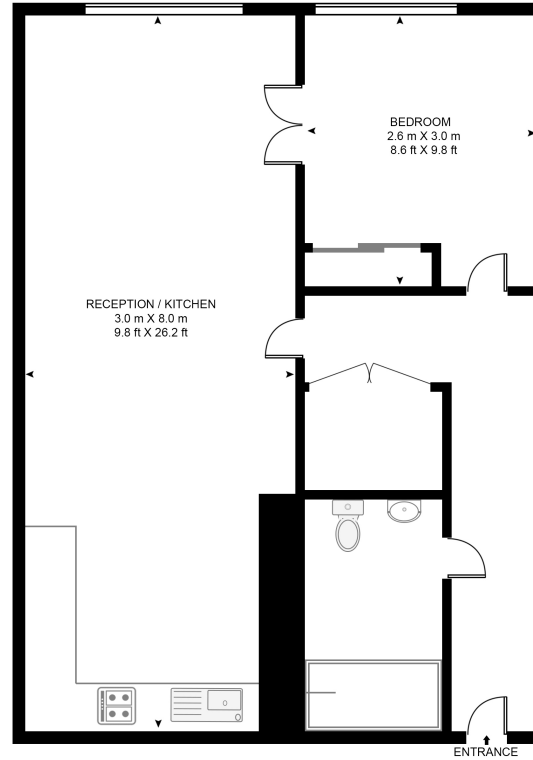
- 1 Bedroom
- 1 Bathroom
- First floor apartment
- North West aspect
- Approx. 489 sq ft (45.5 sq m)
- Close to transport links
- Regent's Park
- No onward chain
- EPC: B



Floorplan

489 sq ft | 45 sq m

THE TRITON BUILDING, 20 BROCK STREET
APPROXIMATE GROSS INTERNAL FLOOR AREA 489 SQ.FT (45.5 SQ.M)



FIRST FLOOR

HDVA

This floor plan has been defined by the RICS Code of Measurement. This floor plan and all others are for approximate representative purposes only and upon usage is agreed to as such by the client.
WWW: hdvirtualart.com | TEL: 0203.974.1567 | EMAIL: info@hdvirtualart.com

City
25 Walbrook The Walbrook
Building,
London EC4N 8AF
020 7337 4000

Urban living, your way.

jll.co.uk/residential

© 2019 Jones Lang LaSalle IP, Inc. All rights reserved. All information contained herein is from sources deemed reliable; however, no representation or warranty is made to the accuracy thereof.

