



Hermes Street Islington N1



A collection of 6 luxury apartments, beautifully designed set in the heart of London.

Description

Situated only minutes from renowned King's Cross St Pancras Station and the stunning streets of Angel Islington, the development at Hermes Street is impeccably located.

This outstanding location coupled with superb facilities and outside spaces such as Highbury Fields, Islington Green and Regent's Canal, make apartments at Hermes Street the perfect place to call home.

These apartments are well situated for both Kings Cross (0.5 miles) and Angel (0.4 miles) in Zone 1.

Early viewings are highly recommended.

- 2 & 3 bedroom apartments available
- Secure access building
- Apartments with balconies available
- Beautifully presented
- Fantastic central London location
- 0.5 miles to King Cross / St Pancras Stations
- 0.4 miles to Angel Station
- Available immediately
- EPC: B

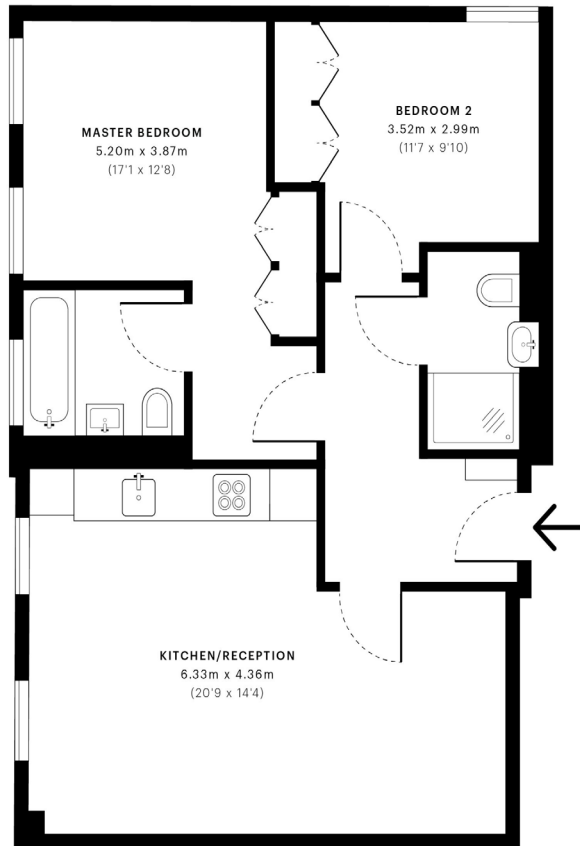
Prices from £700,000



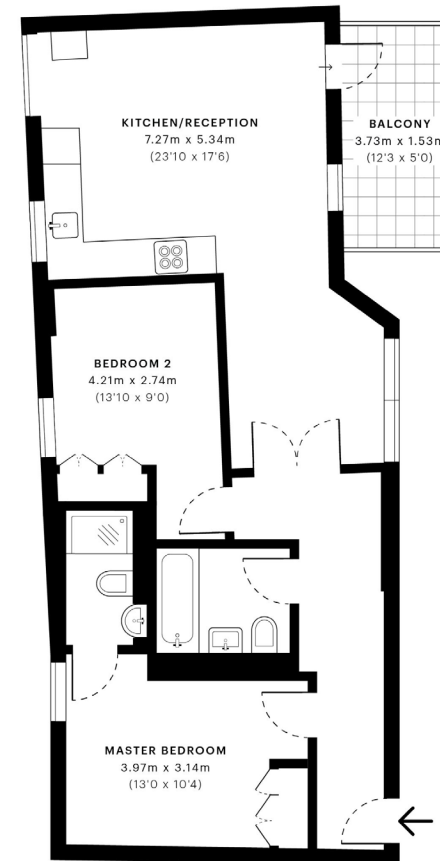
Hermes Street Islington N1



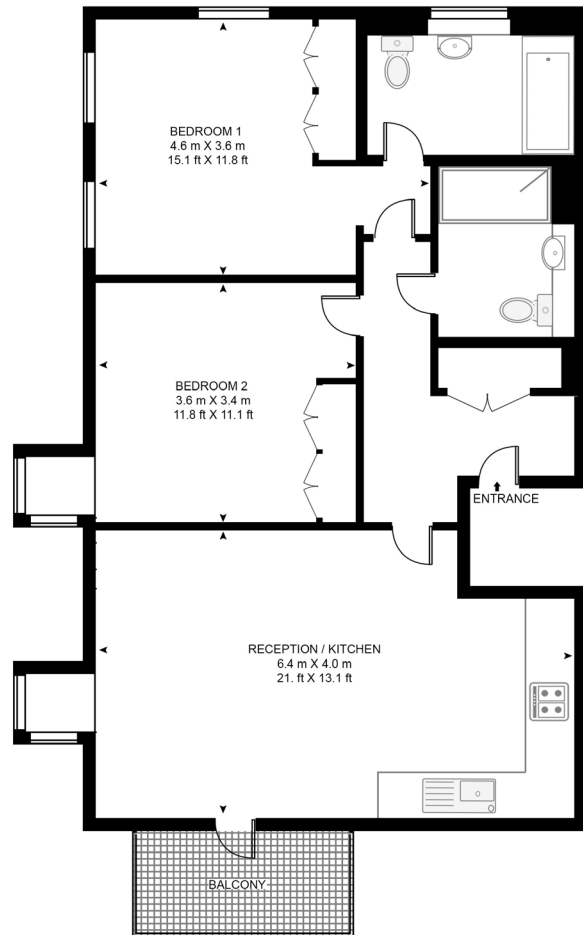
Apartment 1



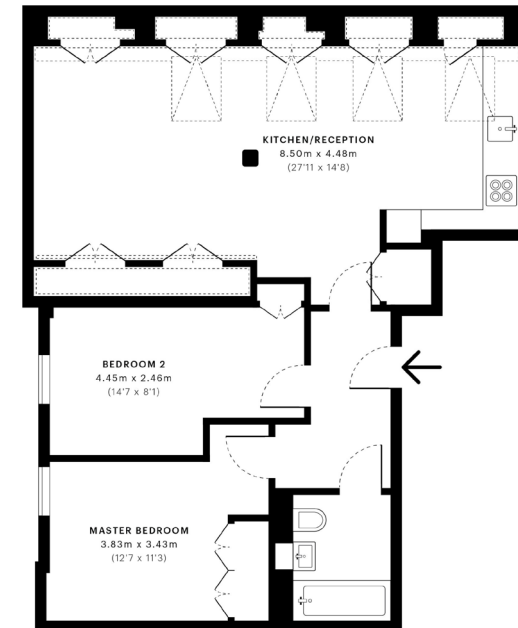
Apartment 2



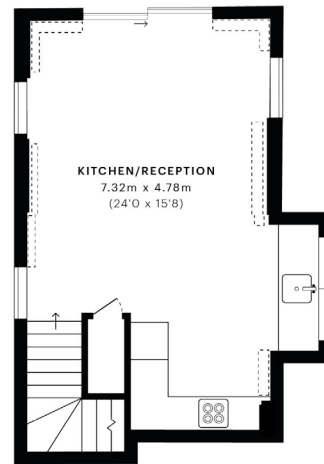
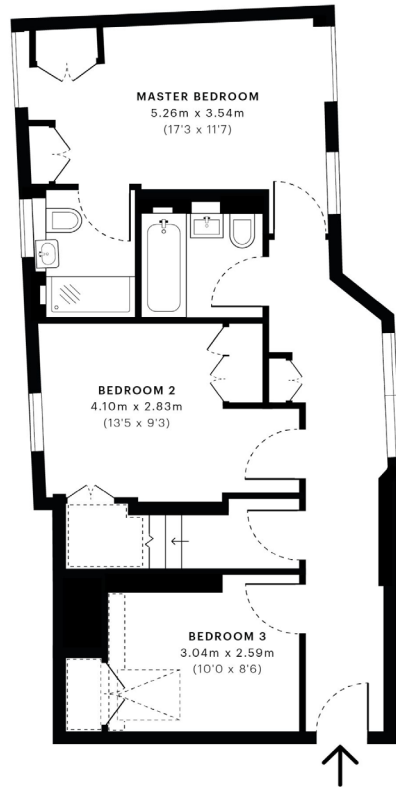
Apartment 3



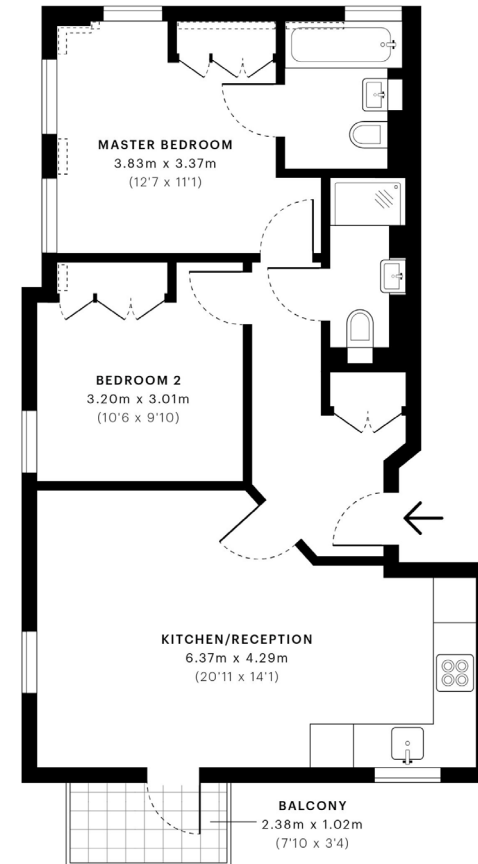
Apartment 4



Apartment 5

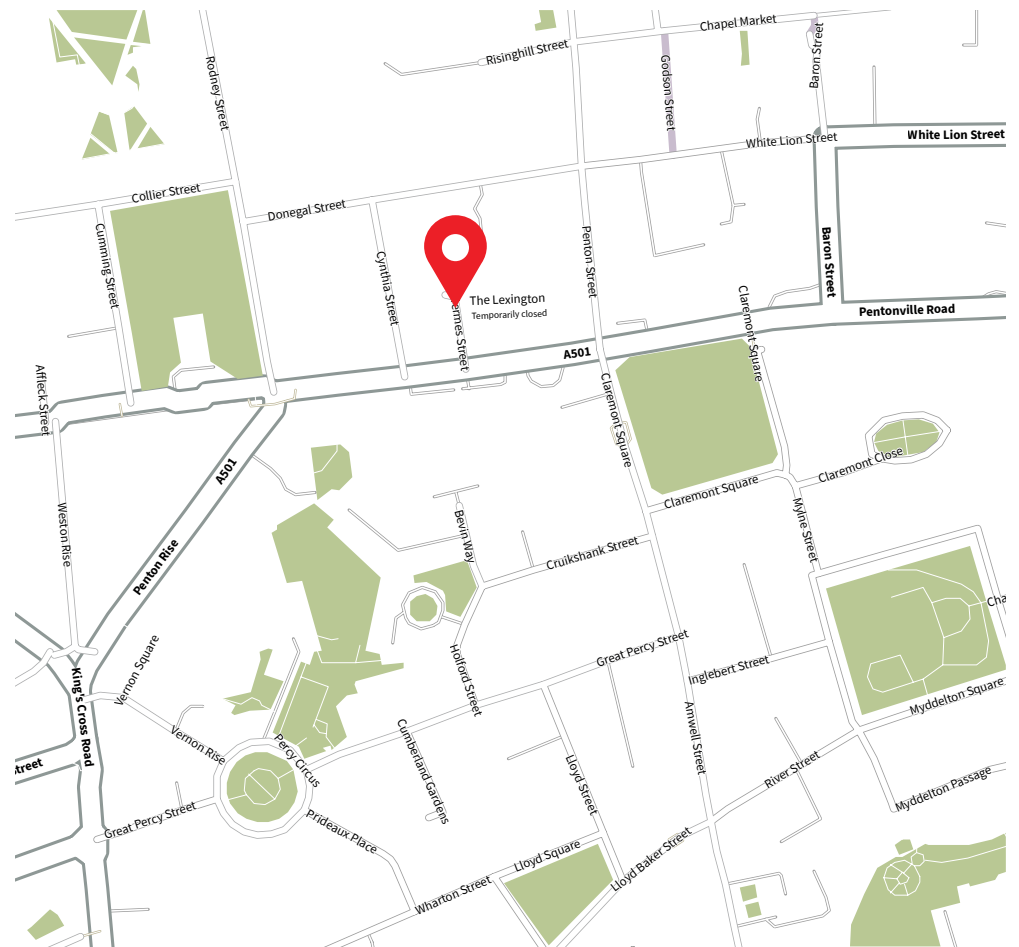


Apartment 6





Location



Hermes Street Islington N1

Sales | Lettings | New homes | Property management

JLL City

The Walbrook Building
25 Walbrook
London
EC4N 8AF
020 7248 6040
salescity@eu.jll.com

Urban living, your way.

jll.co.uk/residential

© 2020 Jones Lang LaSalle IP, Inc. All rights reserved. All information contained herein is from sources deemed reliable; however, no representation or warranty is made to the accuracy thereof.

