



THE ATLAS BUILDING,
LONDON EC1V





Situated on the 12th floor, is this stunning two bedroom, two bathroom apartment boasts approximately 773 sq. ft of living space and is furnished to an exceptional standard.

This stunning apartment comprises a large open plan living and dining area, fully fitted kitchen which opens onto an enclosed balcony with spectacular views over London, two double bedrooms, master with dressing area and en-suite bathroom and a separate family bathroom. The property also benefits from excellent storage.

The Atlas Building is next to Old Street station (0.1 mile) and ideally situated for the City, Hoxton, Shoreditch and Angel. The development offers top of the range amenities which includes pool, spa, gymnasium, private cinema room, resident's only business lounge and 24 hour concierge.

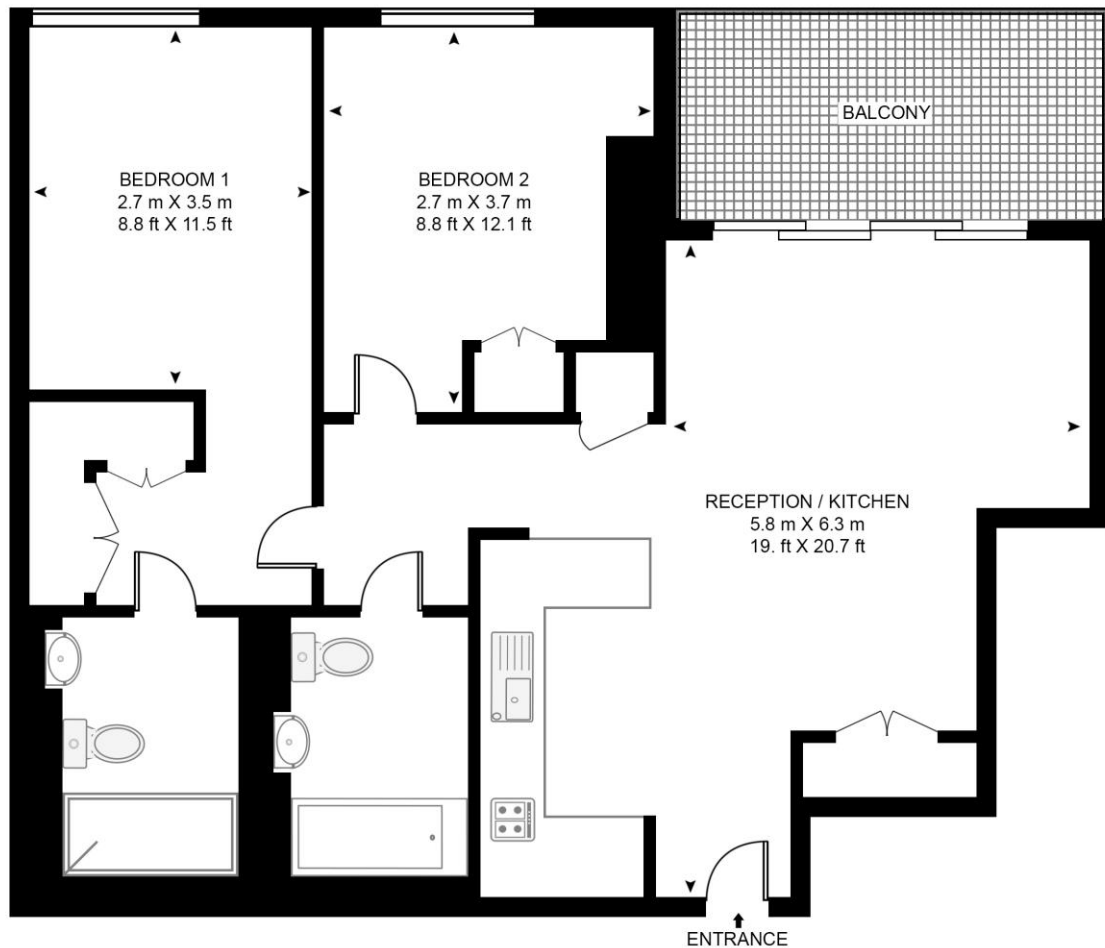
- 2 Bedrooms
- 2 Bathrooms
- 12th Floor modern apartment
- Balcony
- Stunning views
- 0.1 miles from Old Street Station
- Pool, spa, gym and 24 hour concierge
- Leasehold
- EPC: B

PRICE
POA

GROSS INTERNAL AREA
773 sq ft (71.8 sq m)

ATLAS BUILDING, 145 CITY ROAD

APPROXIMATE GROSS INTERNAL FLOOR AREA 773 SQ.FT (71.8 SQ.M)



TWELFTH FLOOR

HDVA

This floor plan has been defined by the RICS Code of Measurement. This floor plan and all others are for approximate representative purposes only and upon usage is agreed to as such by the client.

WWW: hdvirtualart.com | TEL: 0203.974.1567 | EMAIL: info@hdvirtualart.com

The Walbrook Building
25 Walbrook
London
EC4N 8AF

These particulars are for general information only and do not constitute any part of an offer or contract. All statements contained therein are made without responsibility on the part of the vendors or lessors and are not to be relied upon as statement or representation of fact. Intending purchasers or lessees must satisfy themselves, by inspection, or otherwise, as to the correctness of each of the statements or dimensions contained in these particulars..