



Lovat Lane, London EC3R

Guide price £900,000 Leasehold







Description

A beautiful 2 bedroom apartment, located on Lovat Lane within Eastcheap Conservation Area in the financial heart of The City of London. Located only 0.2 miles from Monument station.

The apartment comprises of an open plan kitchen with fitted appliances and large reception area with dual aspect, large entrance hall with two storage cupboards, master suite with fitted wardrobes and en-suite shower room and a second double bedroom with a separate family bathroom.

An exclusive lifestyle opportunity within a select boutique development nestled along one of the Capital's most characteristic and notable cobbled lanes bordered by Eastcheap and Monument Street.

Early viewings are highly recommended.

- 2 Bedrooms
- 2 Bathrooms
- Open plan kitchen
- 0.2 miles from Monument station
- Approx. 948 sq ft (88.1 sq m)
- Share of freehold
- EPC: B

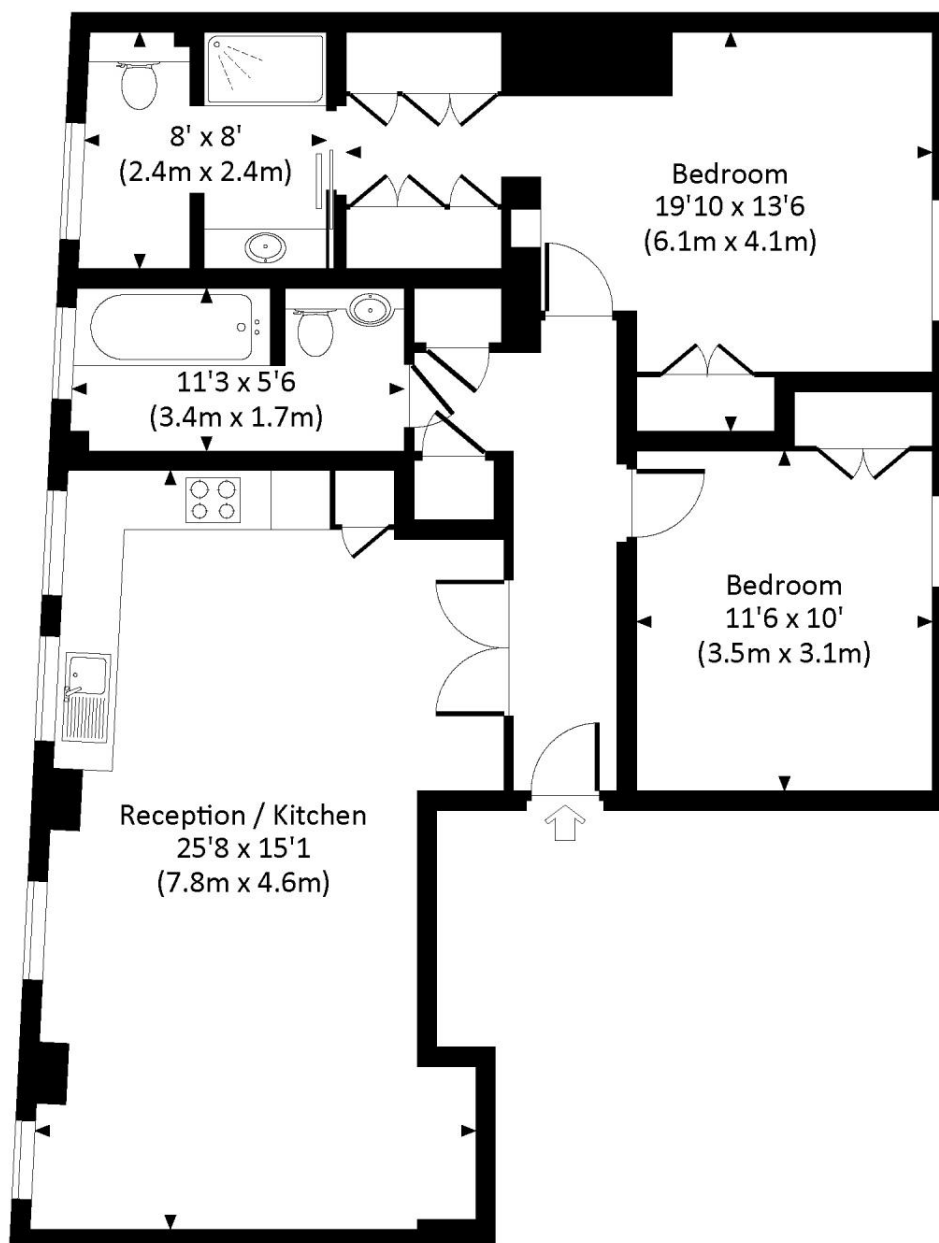
Floorplan

948 sq ft | 88 sq m

LOVAT LANE, EC3R

Approx. gross internal area

948 Sq Ft. / 88.1 Sq M.



THIRD FLOOR



All measurements have been made in accordance with RICS Code of Measuring Practice which are approximate only and only for illustrative purposes. For the avoidance of doubt, Dowling Jones Design shall not be liable for any reliance on these measurements. © 2018 www.dowlingjones.com 020 7610 9933

City
25 Walbrook The Walbrook
Building,
London EC4N 8AF
020 7337 4000

Urban living, your way.

jll.co.uk/residential

© 2019 Jones Lang LaSalle IP, Inc. All rights reserved. All information contained herein is from sources deemed reliable; however, no representation or warranty is made to the accuracy thereof.

