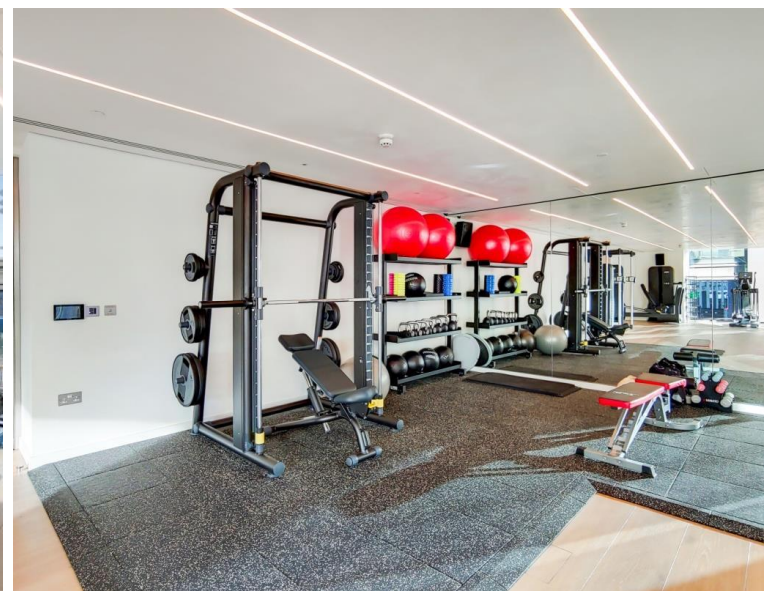


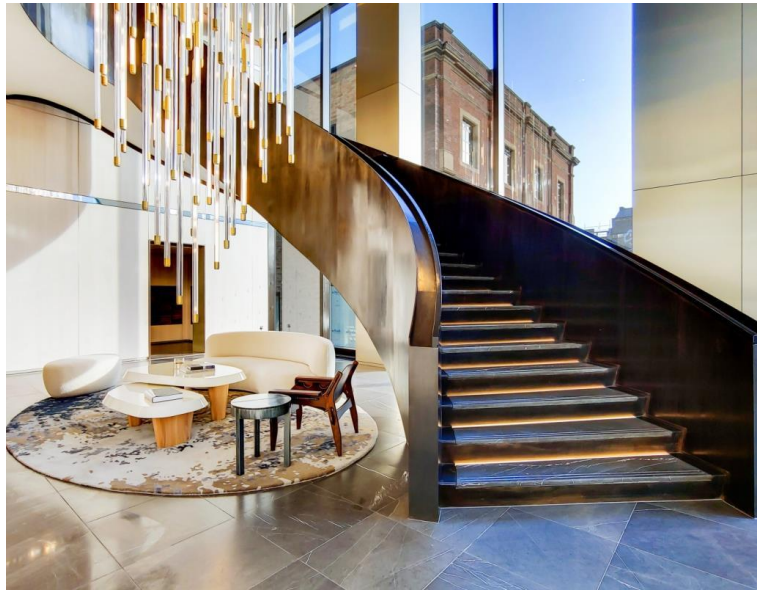
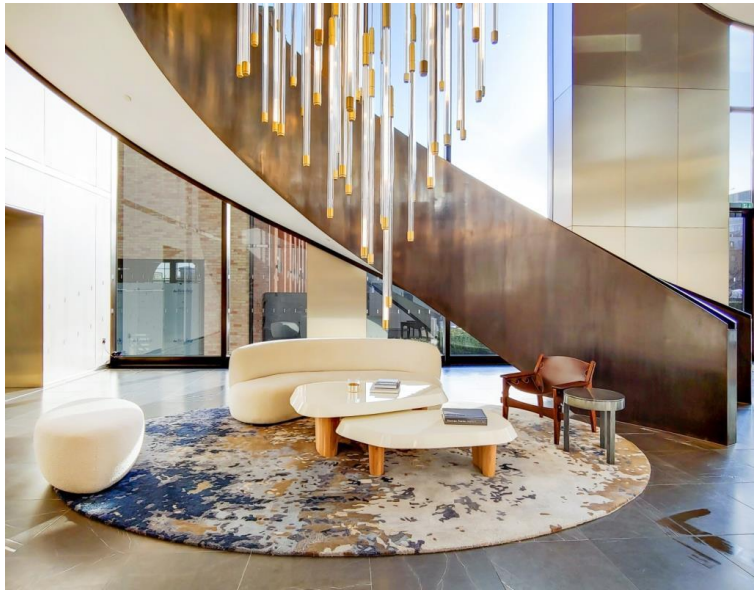
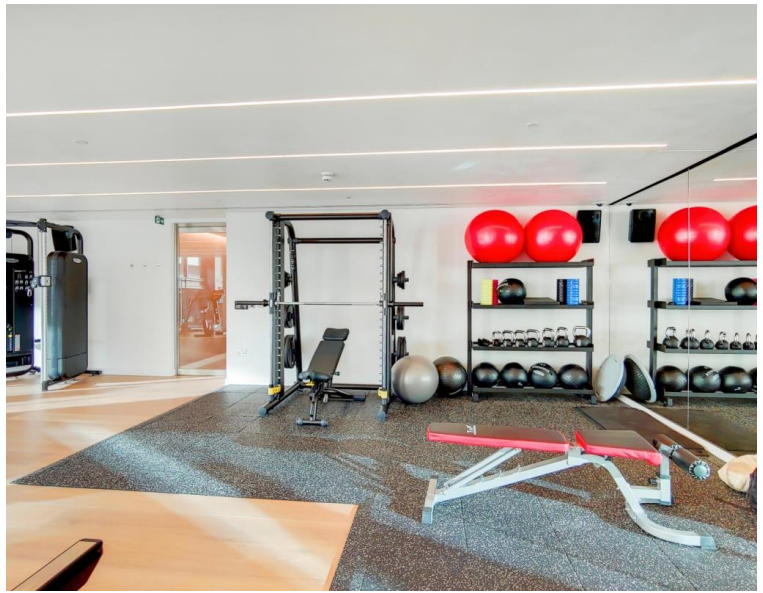
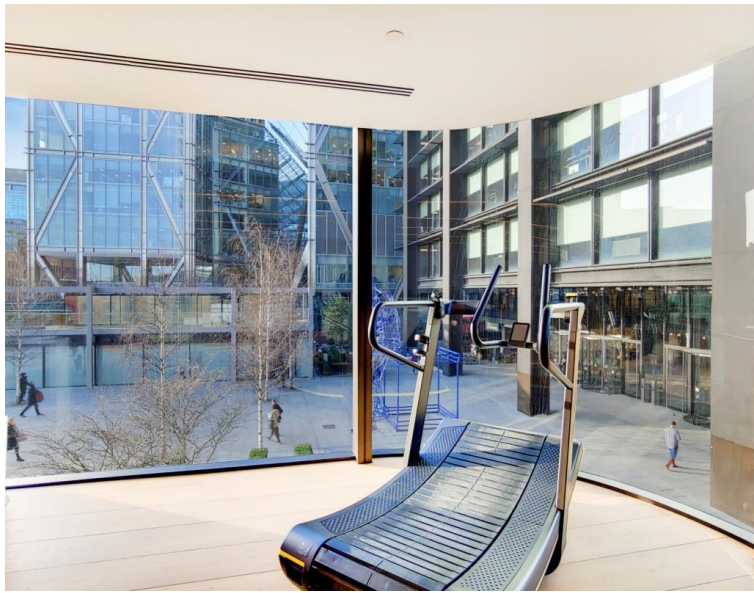


2 Principal Place, London EC2A

Price £595 per week - Furnished







Description

ZERO DEPOSIT AVAILABLE! A 19th floor 1 bedroom in the sought after Principal Tower, EC2.

Offered fully furnished, this stunning 1 bedroom apartment boasts spectacular South Eastern facing views towards Canary Wharf, Stratford and the City skyline. The property comprises a spacious open plan reception with fully fitted kitchen, double bedroom with fitted wardrobes, luxury Porcelain bathroom, under floor heating, large balcony, comfort cooling and heating and oak herringbone flooring.

Principal Tower is situated in the Shoreditch and City corridor, close to both Liverpool Street Station (0.3 miles) and Shoreditch High Street Station (0.3 miles). The development has excellent on site amenities which include a pool with Jacuzzi, spa, gymnasium, residents' lounge/bar, private cinema room and 24 hour concierge.

We understand that cooling / heating is delivered via a communal system for which separate charges apply.

- ZERO DEPOSIT AVAILABLE!
- 1 Bedroom
- 1 Bathroom
- Private balcony
- On-site leisure facilities including pool, spa and cinema
- 24 hour concierge
- 0.3 miles from Liverpool Street Station
- Approx 545 sq ft (50.6 sq m)
- Furnished
- EPC: B

Floorplan

544 sq ft | 51 sq m

City
25 Walbrook The Walbrook
Building,
London EC4N 8AF
020 7337 4000

Urban living, your way.

jll.co.uk/residential

© 2019 Jones Lang LaSalle IP, Inc. All rights reserved. All information contained herein is from sources deemed reliable; however, no representation or warranty is made to the accuracy thereof.

