



Pearson Square, London W1T

Guide price £2,500,000 Leasehold







Description

A delightful bright and modern apartment situated in the Fitzroy Place development on Pearson Square.

The apartment comprises master bedroom with en suite bathroom, second double bedroom, one further shower room, reception room with dining area, open plan kitchen and a spacious balcony. Pearson Square is excellently located in the heart of Fitzrovia, close to the shops, restaurants and transport links of Oxford Street and the West End.

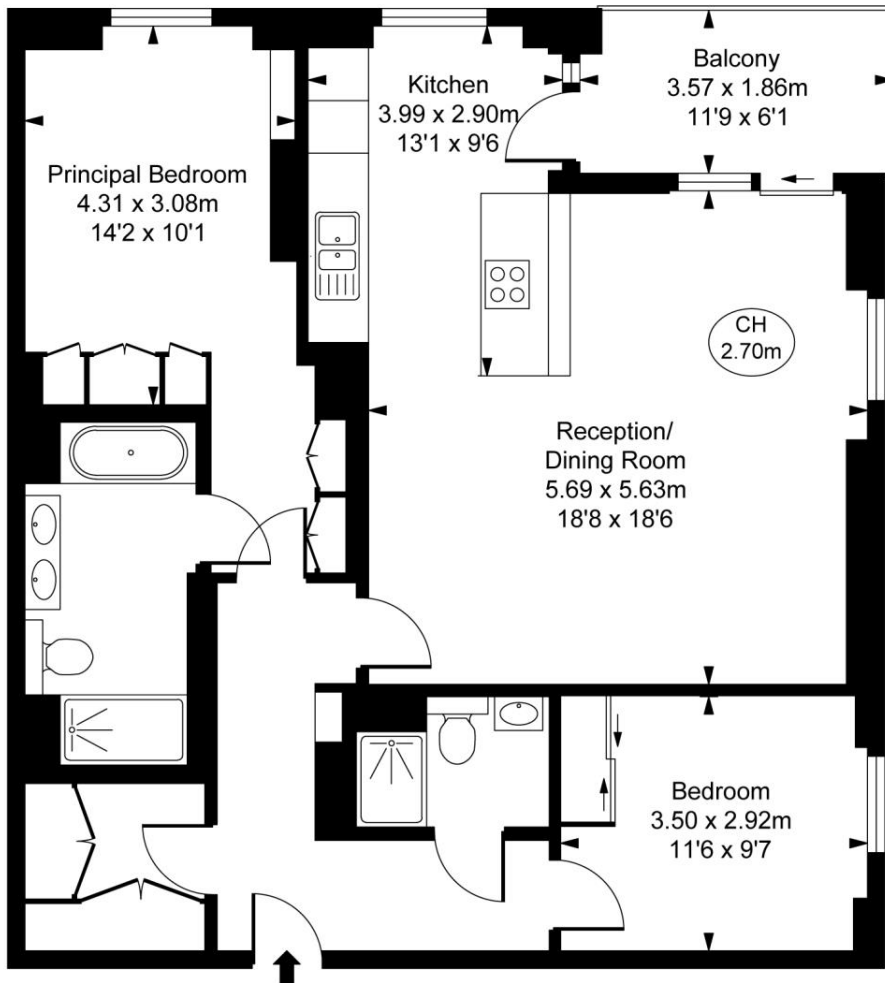
The property is available with no onward chain, early viewings are highly recommended.

- Master bedroom with en suite bathroom
- Second double bedroom
- One shower room
- Reception room
- Open plan kitchen
- Balcony
- Sixth floor
- Lift
- Furnished
- Approx. 1000 sq ft (96 sq m)

Floorplan

1,000 sq ft | 93 sq m

Fitzroy Place,
Pearson Square, W1T
Approximate Gross Internal Area
92.91 sq m / 1,000 sq ft
(CH = Ceiling Heights)



Sixth Floor

This plan is not to scale. It is for guidance and not for valuation purposes.
All measurements and areas are approximate only, and have been prepared in accordance with the current edition of the RICS Code of Measuring Practice.
© Fulham Performance

City
25 Walbrook The Walbrook
Building,
London EC4N 8AF
020 7337 4000

Urban living, your way.

jll.co.uk/residential

© 2019 Jones Lang LaSalle IP, Inc. All rights reserved. All information contained herein is from sources deemed reliable; however, no representation or warranty is made to the accuracy thereof.

