



**CONQUEST TOWER, BLACKFRIARS RD,
LONDON SE1**





A spectacular one bedroom apartment on the 7th floor in the luxury Conquest Tower, Blackfriars Circus.

Situated on the 7th floor, this stunning apartment boasts specular South Eastern views and offers approximately 695 sq. ft. of living space. The property is offered to a high standard and comprises a double bedroom, spacious reception room and open plan kitchen with AEG appliances, sun room / winter garden with stunning South east facing views of the iconic London Skyline, Porcelain tiled flooring, contemporary bathroom and excellent storage space.

Conquest Tower is part of the 'Blackfriars Circus' development with excellent amenities a 24 hour concierge, residents gym and a stunning roof top terrace.

Well situated for the City of London, approximately 0.4 miles from Waterloo Station, 0.3 Miles from Blackfriars Station approximately 0.3 miles from Southwark Station in Zone 1.

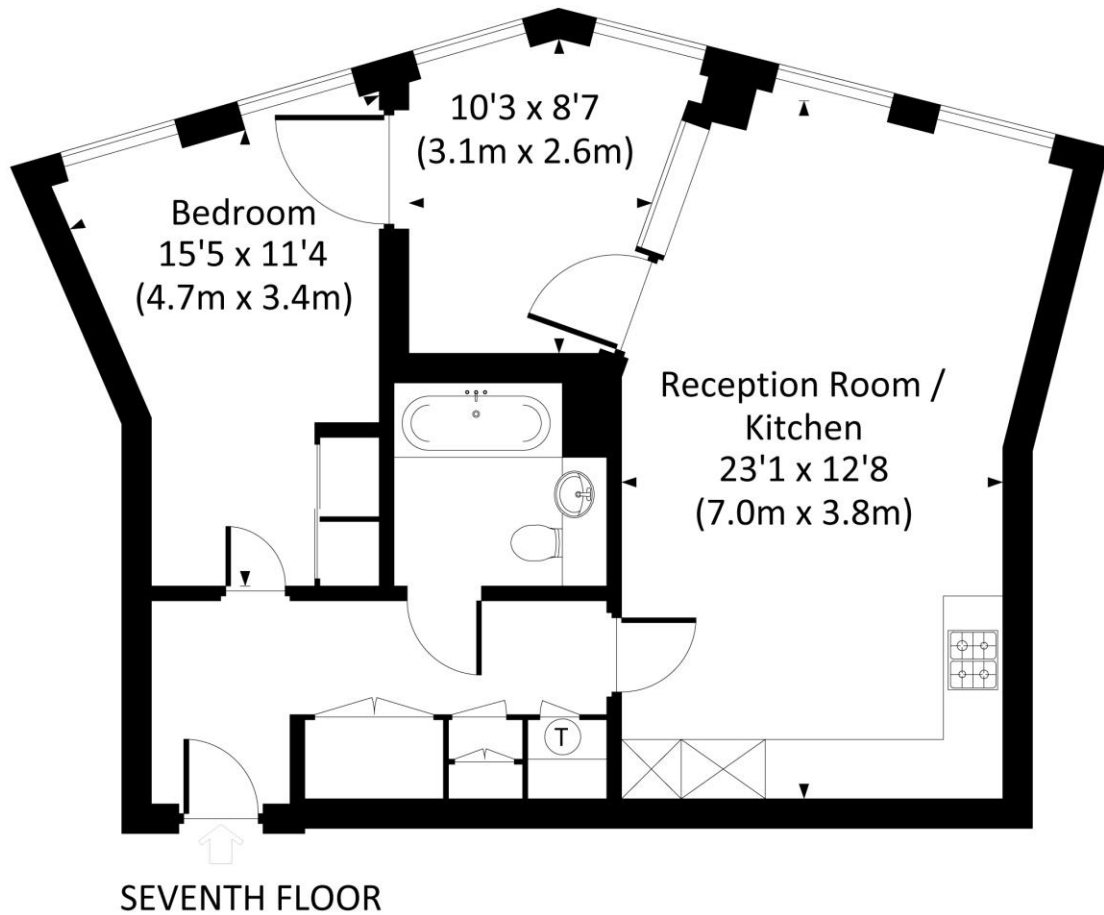
- 1 Bedroom
- 1 Bathroom
- Stunning panoramic views across London
- Winter garden
- 7th Floor
- 24 Hour concierge
- Designed to an exceptionally high standard
- Heart of historic Southwark
- Fitness suite for residents
- 0.3 miles from Southwark station – Zone 1
- Leasehold
- EPC: B

PRICE
OIEO £725,000

GROSS INTERNAL AREA
695 sq ft (64.6 sq m)

Conquest Tower, SE1

Approx. gross internal area
695 Sq Ft. / 64.6 Sq M.



All measurements have been made in accordance with RICS code of Measuring Practice which are approximate only and only for illustrative purposes. For the avoidance of doubt, Dowling Jones Design shall not be liable for any reliance on these measurements. © 2021 www.dowlingjones.com 020 7610 9933

The Walbrook Building
25 Walbrook
London
EC4N 8AF

These particulars are for general information only and do not constitute any part of an offer or contract. All statements contained therein are made without responsibility on the part of the vendors or lessors and are not to be relied upon as statement or representation of fact. Intending purchasers or lessees must satisfy themselves, by inspection, or otherwise, as to the correctness of each of the statements or dimensions contained in these particulars..