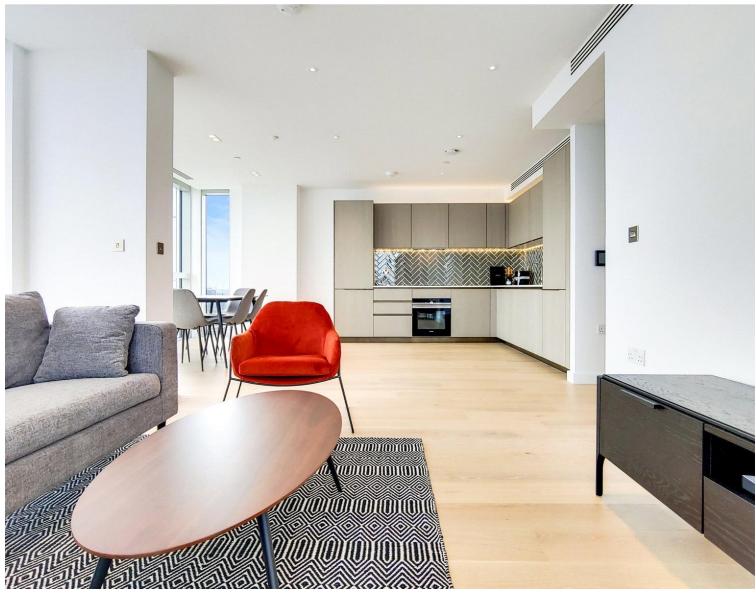
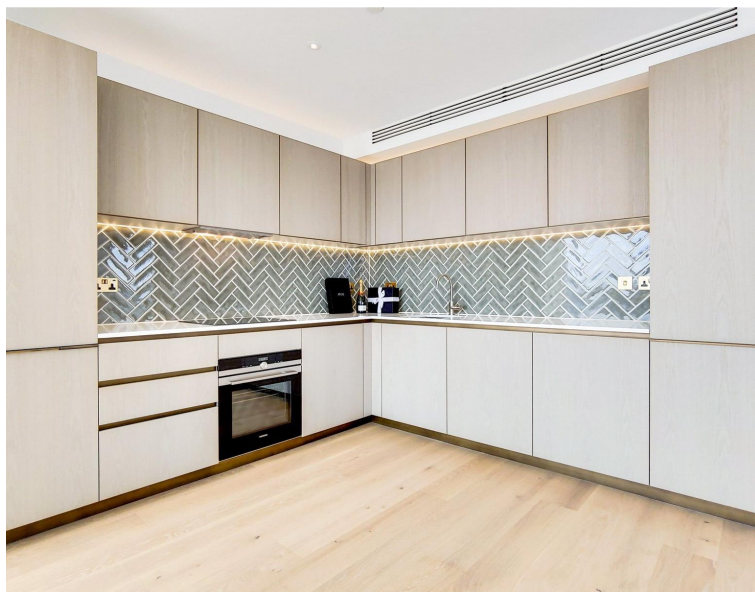


City Road, London EC1V

Price £995 per week - Furnished







Description

ZERO DEPOSIT AVAILABLE! A truly spectacular and rare available 3 bedroom apartment in the ever popular Atlas Building, Old Street, EC1.

Situated on the 24th floor, this well-furnished 3 bedroom apartment is situated on the south side of the building and boasts approximately 1206 sq. ft. The apartment comprises 3 double bedrooms with large fitted wardrobes to bedrooms 1 and 2, two luxury bathrooms, large reception area with open plan fully fitted kitchen and two large balconies.

The Atlas Building is next to Old Street station (0.1 mile) and ideally situated for the City, Hoxton, Shoreditch and Angel. The development has a high specification with comfort cooling / heating and offers top of the range amenities which include pool, spa, gymnasium, private cinema room, resident's only business lounge and 24 hour concierge.

We understand that cooling / heating is delivered via a communal system for which separate charges apply.

- ZERO DEPOSIT AVAILABLE!
- 3 Bedrooms
- 2 Bathrooms
- Private balcony
- On-site leisure facilities including pool, spa and cinema
- 24 hour concierge
- 0.1 miles from Old Street Station
- Approx. 1206 sq ft (112.1 sq m)
- Furnished
- EPC: B

Floorplan

1,206 sq ft | 112 sq m

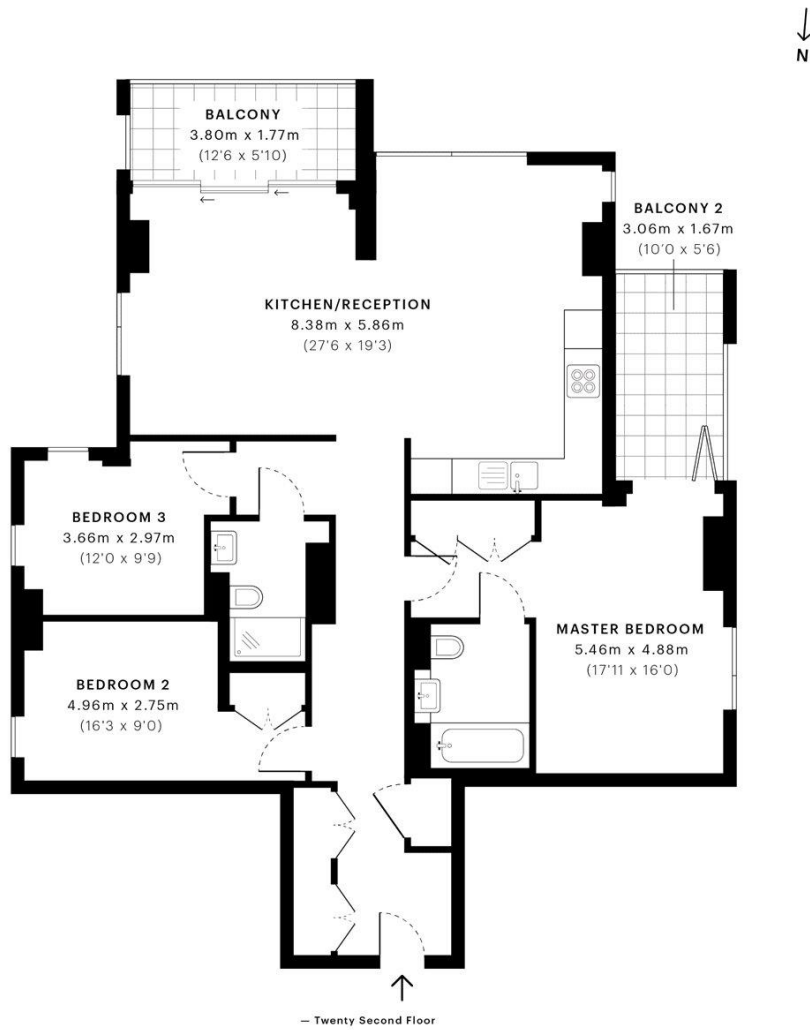


City Road, EC1V

CAPTURE DATE
09/08/2019

LASER SCAN POINTS
44,149,152

GROSS INTERNAL AREA
112.1 Sqm / 1206.7 Sqft



GROSS INTERNAL AREA
The footprint of the property
112.1 Sqm / 1206.7 Sqft

NET AREA (INTERNAL)
Excludes walls and external features
105.6 Sqm / 1136.8 Sqft

EXTERNAL STRUCTURAL FEATURES
Balconies, terraces, verandas etc.
11.8 Sqm / 127.0 Sqft

RESTRICTED HEAD HEIGHT
Limited use area under 1.5m
0.0 Sqm / 0.0 Sqft



Spec floor plans are produced in accordance with the Royal Institution of Chartered Surveyors' Property Measurement Standards. Plots and gardens are illustrative only and are excluded from all area calculations. Due to rounding, numbers may not add up precisely.



IPMS 3B RESIDENTIAL
123.9 Sqm / 1333.7 Sqft

IPMS 3C RESIDENTIAL
117.4 Sqm / 1263.9 Sqft

SPEC ID
5d4999cfb67d890af073925b

City
25 Walbrook The Walbrook
Building,
London EC4N 8AF
020 7337 4000

Urban living, your way.

jll.co.uk/residential

© 2019 Jones Lang LaSalle IP, Inc. All rights reserved. All information contained herein is from sources deemed reliable; however, no representation or warranty is made to the accuracy thereof.

