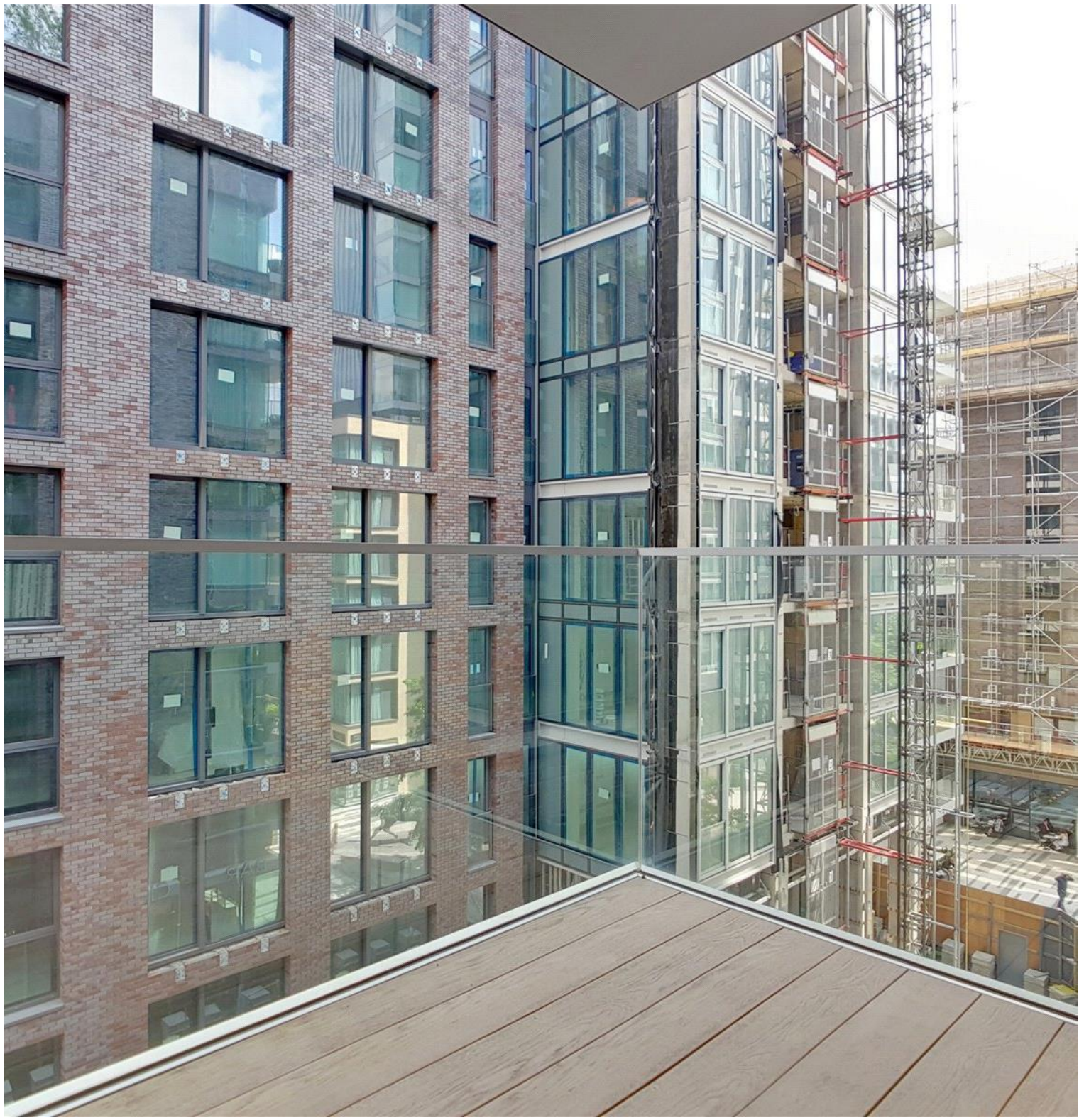
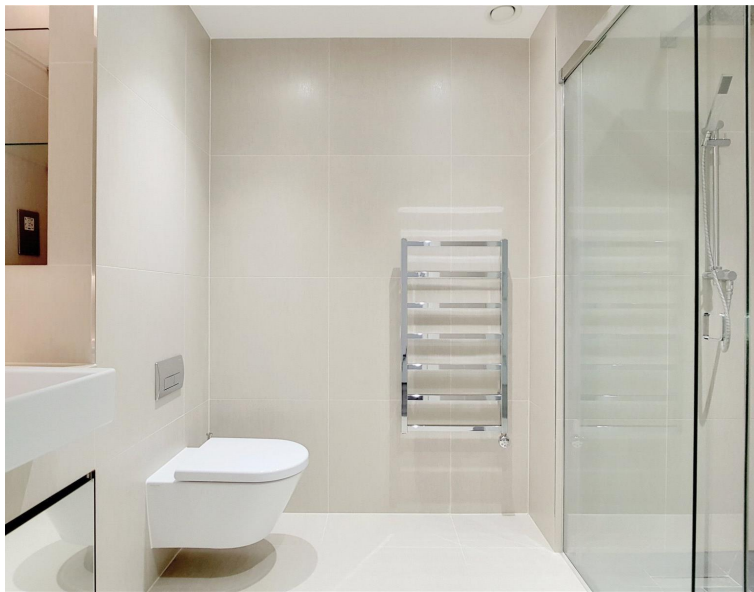




Canter Way, London E1
Price £450 per week - Furnished







Description

A stunning 1 bedroom apartment situated on the 4th floor, in the luxury Goodmans Fields development.

Offered fully furnished, this spacious apartment boasts (approximately) 584 sq.ft. of living space and offers a high specification. The property comprises 1 double bedroom with large fitted wardrobe, luxury bathroom, contemporary kitchen with Siemens appliances, and large balcony.

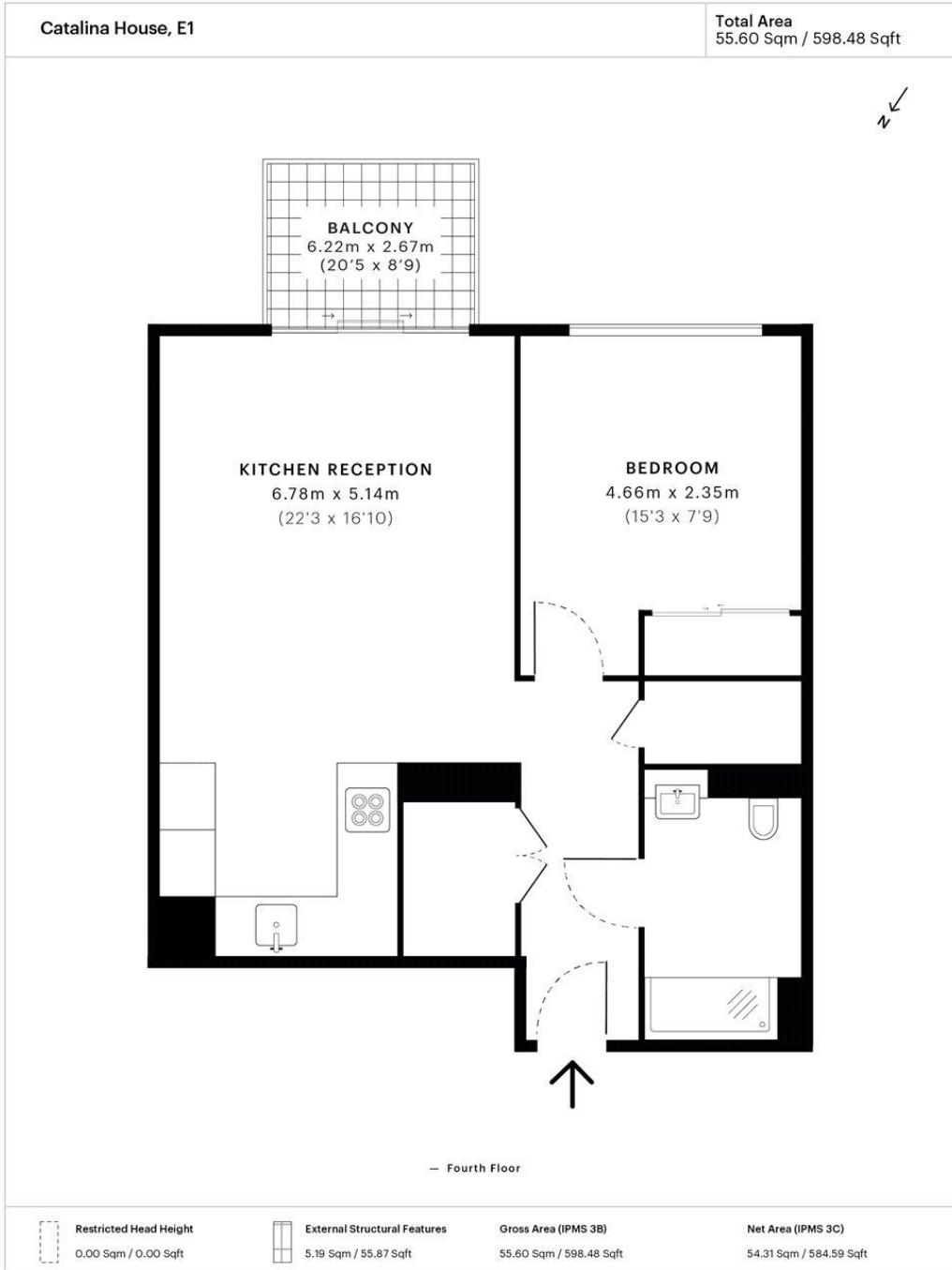
The development offers residents on site leisure facilities to include gymnasium, swimming pool and 5 star healthcare centre, private cinema room, business / conference facilities and 24 hour concierge. Goodmans Fields is situated 0.3 miles from Aldgate underground station, in the heart of zone 1.

We understand that cooling / heating is delivered via a communal system for which separate charges apply.

- 1 Bedroom
- 1 Bathroom
- High specification
- Balcony
- On site leisure facilities
- 0.3 miles from Aldgate Station
- Approx. 584 sq ft (54.3 sq m)
- Furnished
- EPC: B

Floorplan

584 sq ft | 54 sq m



Spec floor plan captured for JLL, City Office on 16/07/2018 using 157,799,387 laser scan points, accurate to +/- 3cm. Produced in accordance with Royal Institution of Chartered Surveyors Property Measurement Standards, incorporating International Property Measurement Standard (IPMS). If you intend to rely on any measurement in a transaction you should perform your own checks. Plot/Gardens illustrative only and excluded from all area calculations. SpecID: 5b449bd8ca428d0c6a75efd0

Restricted Head Height = Limited use area under 1.5m. **External Structural Features** = Balconies, terraces or verandas or similar. **IPMS 3B** = gross internal area measured from the internal faces of external walls, including walls/obstructions and External Structural Features, excluding stairwell area above/below the ground floor. **IPMS 3C** = net area of IPMS 3B excluding internal walls/obstructions and stairwell area above/below the ground floor. **Total Internal Area** = IPMS 3B gross area + stairwell area above/below ground floor of 0.00 Sqm / 0.00 Sqft.



City
25 Walbrook The Walbrook
Building,
London EC4N 8AF
020 7337 4000

Urban living, your way.

jll.co.uk/residential

© 2019 Jones Lang LaSalle IP, Inc. All rights reserved. All information contained herein is from sources deemed reliable; however, no representation or warranty is made to the accuracy thereof.

