

## 2 Principal Place, London EC2A

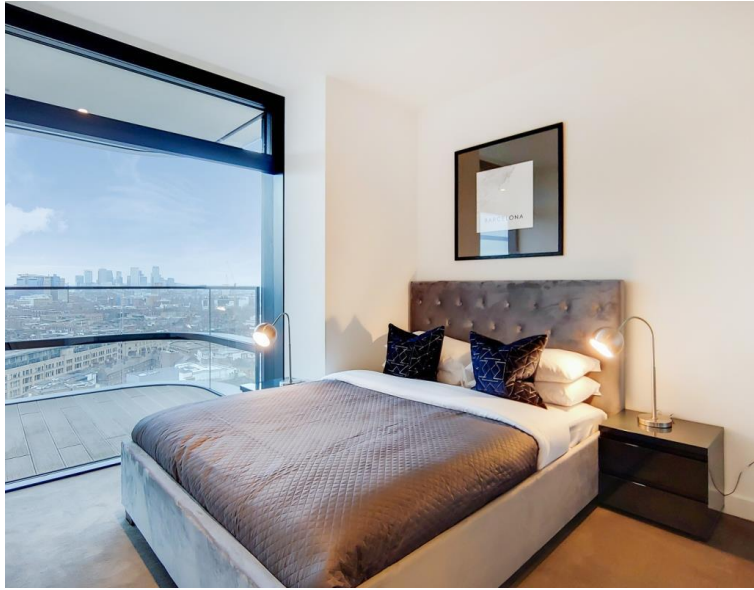
Price £575 per week - Furnished











## Description

A 16th floor 1 bedroom in the sought after Principal Tower, EC2.

Offered fully furnished, this stunning 1 bedroom apartment boasts spectacular South Eastern facing views towards Canary Wharf, Stratford and the City skyline. The property comprises a spacious open plan reception with fully fitted kitchen, double bedroom with fitted wardrobes, luxury Porcelain bathroom, under floor heating, large balcony, comfort cooling and heating and oak herringbone flooring.

Principal Tower is situated in the Shoreditch and City corridor, close to both Liverpool Street Station (0.3 miles) and Shoreditch High Street Station (0.3 miles). The development has excellent on site amenities which include a pool with Jacuzzi, spa, gymnasium, residents' lounge/bar, private cinema room and 24 hour concierge.

We understand that cooling / heating is delivered via a communal system for which separate charges apply.

- 1 Bedroom
- 1 Bathroom
- Private balcony
- On-site leisure facilities including pool, spa and cinema
- 24 hour concierge
- 0.3 miles from Liverpool Street Station
- Approx 545 sq ft (50.6 sq m)
- Furnished
- EPC: B

# Floorplan

545 sq ft | 51 sq m

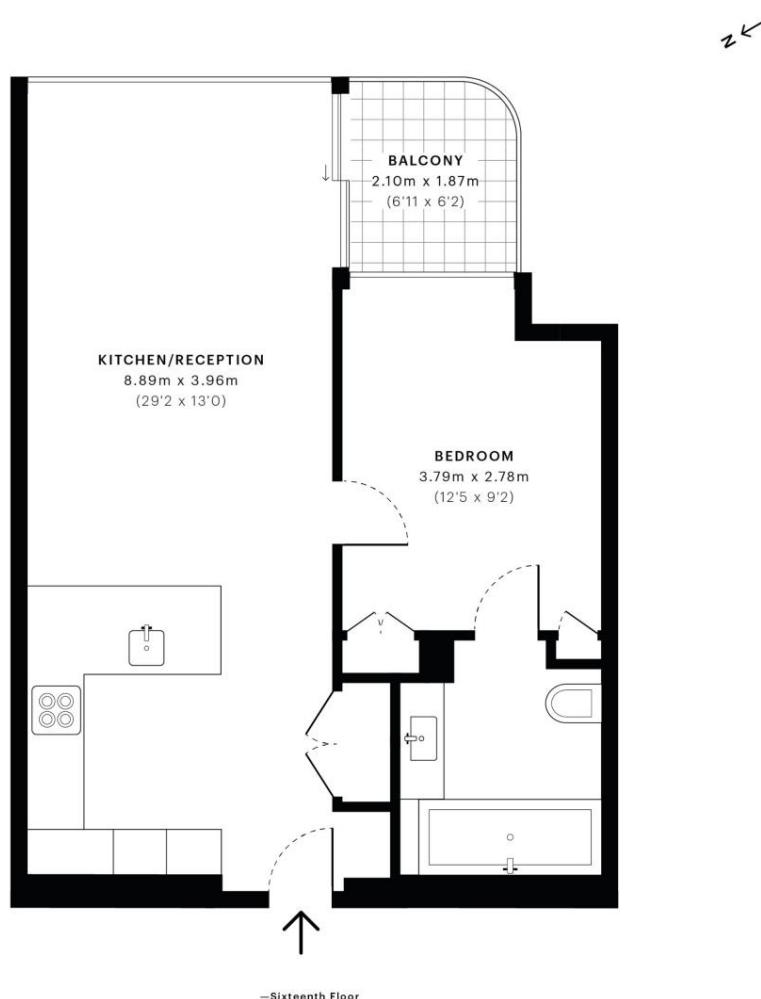


## Principal Place, EC2A

CAPTURE DATE  
16/01/2020

LASER SCAN POINTS  
20,548,374

GROSS INTERNAL AREA  
46.7 Sqm / 503.0 Sqft



GROSS INTERNAL AREA (GIA)  
The footprint of the property.  
**46.7 Sqm / 503.0 Sqft**



NET INTERNAL AREA (NIA)  
Excludes walls and external features.  
Includes washrooms, restricted head  
**45.5 Sqm / 489.5 Sqft**



EXTERNAL STRUCTURAL FEATURES  
Balconies, terraces, verandas etc.  
**3.8 Sqm / 41.0 Sqft**



RESTRICTED HEAD HEIGHT  
Limited use area under 1.9m  
**0.0 Sqm / 0.0 Sqft**



Spec floor plans are produced in accordance with the Royal Institution of Chartered Surveyors' Property Measurement Standards. Plots and gardens are illustrative only and are excluded from all area calculations. Due to rounding, numbers may not add up precisely. All measurements shown for the individual room lengths and widths are the maximum points of measurements captured in the scan.

IPMS 3B RESIDENTIAL  
50.5 Sqm / 544.1 Sqft

IPMS 3C RESIDENTIAL  
49.3 Sqm / 530.5 Sqft

SPEC ID  
5e1ef615cfc4e00c8680c3be

City  
25 Walbrook The Walbrook  
Building,  
London EC4N 8AF  
020 7337 4000

*Urban living, your way.*

[jll.co.uk/residential](http://jll.co.uk/residential)

© 2019 Jones Lang LaSalle IP, Inc. All rights reserved. All information contained herein is from sources deemed reliable; however, no representation or warranty is made to the accuracy thereof.

