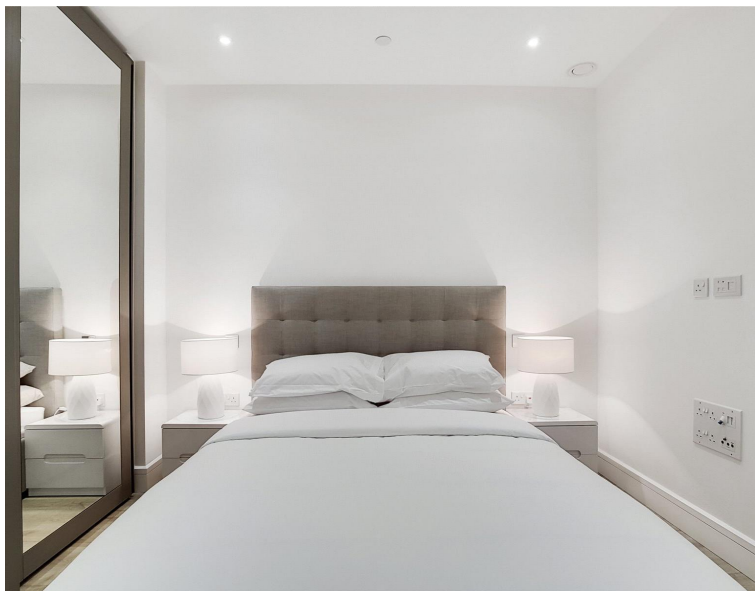
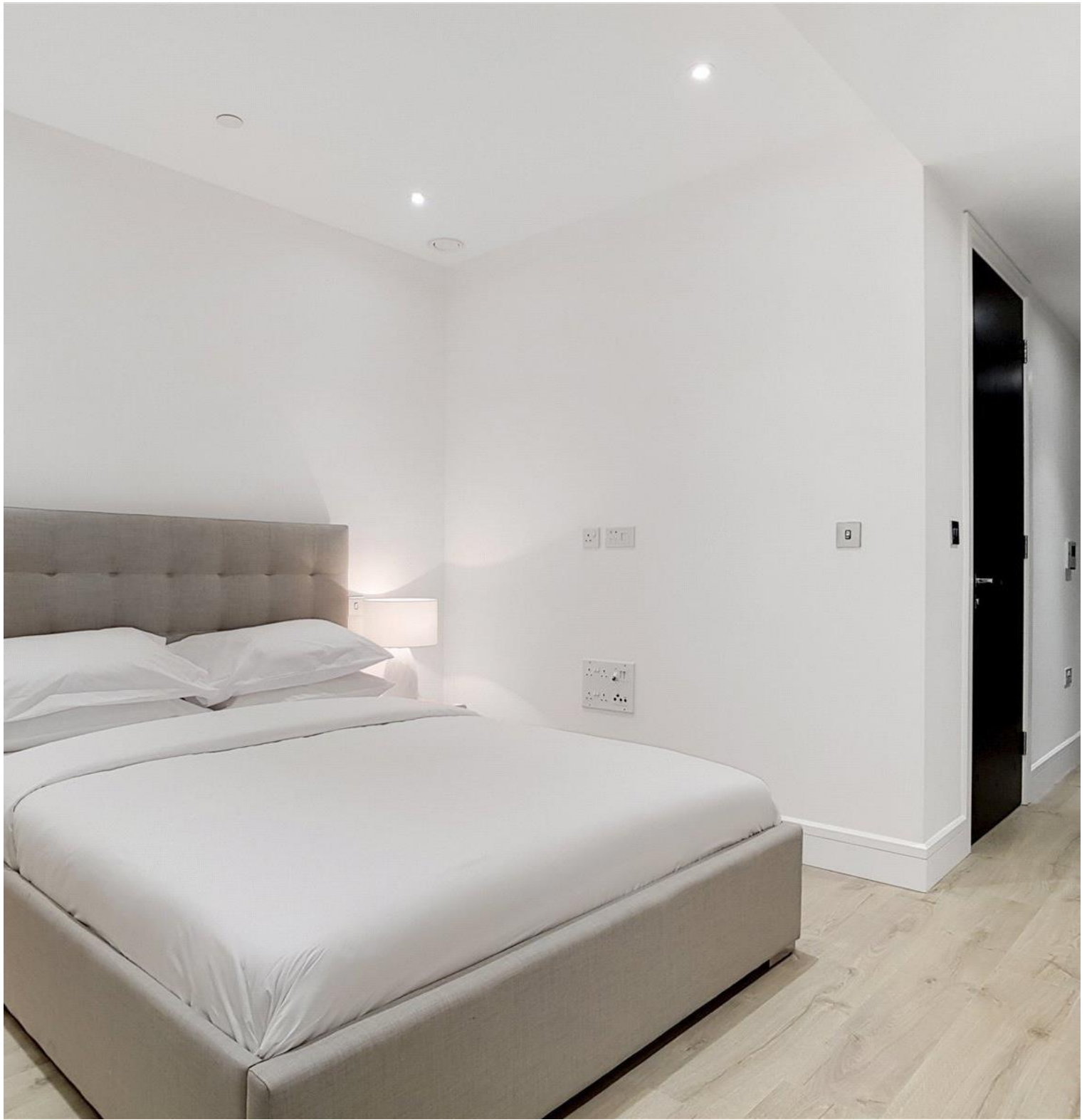




**Stable Walk, London E1**  
Price £395 per week - Furnished







## Description

ZERO DEPOSIT AVAILABLE! A stunning studio apartment in Perilla House at Goodmans Fields, conveniently located on the doorstep of the City of London.

Situated on the 5th floor, this spacious studio apartment is approximately 475 sq ft and comprises open plan living / sleeping area, large fitted wardrobes, high specification with solid wooden flooring, contemporary kitchen with Siemens appliances, luxury shower room with Porcelain tiled finish and excellent storage space.

Benefits include on-site leisure facilities with the gym, swimming pool and 5 star healthcare centre, private cinema room, business / conference facilities and 24 hour concierge. Approximately 0.1 mile from Aldgate East and located in Zone 1.

We understand that cooling / heating is delivered via a communal system for which separate charges apply.

- Studio
- 1 Bathroom
- Open living space
- 24 hour concierge
- On-site leisure facilities
- 0.1 mile from Aldgate East Station
- Approx. 480 sq ft (44.6 sq m)
- Furnished
- EPC: B

# Floorplan

475 sq ft | 44 sq m



Spec floor plan captured for JLL, City Office on 26/11/2018 using 12,251,929 laser scan points, accurate to +/- 3cm. Produced in accordance with Royal Institution of Chartered Surveyors Property Measurement Standards, incorporating International Property Measurement Standard (IPMS). If you intend to rely on any measurement in a transaction you should perform your own checks. Plot/Gardens illustrative only and excluded from all area calculations. SpecID: 5b7e58ddbaebb09e93e8f08

**Restricted Head Height** = Limited use area under 1.5m. **External Structural Features** = Balconies, terraces or verandas or similar. **IPMS 3B** = gross internal area measured from the internal faces of external walls, including walls/obstructions and External Structural Features, excluding stairwell area above/below the ground floor. **IPMS 3C** = net area of IPMS 3B excluding internal walls/obstructions and stairwell area above/below the ground floor. **Total Area** = IPMS 3B gross area + stairwell area above/below ground floor of 0.00 Sqm / 0.00 Sqft.



City  
25 Walbrook The Walbrook  
Building,  
London EC4N 8AF  
020 7337 4000

*Urban living, your way.*

[jll.co.uk/residential](http://jll.co.uk/residential)

© 2019 Jones Lang LaSalle IP, Inc. All rights reserved. All information contained herein is from sources deemed reliable; however, no representation or warranty is made to the accuracy thereof.

