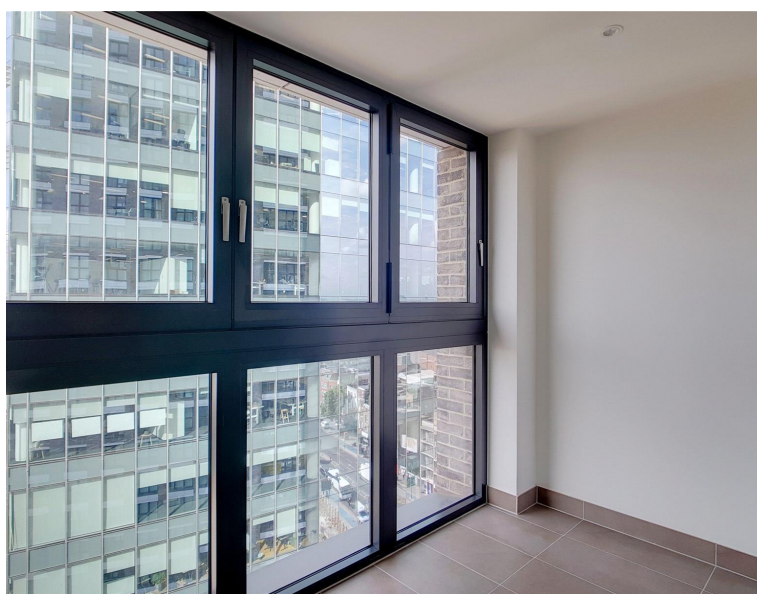
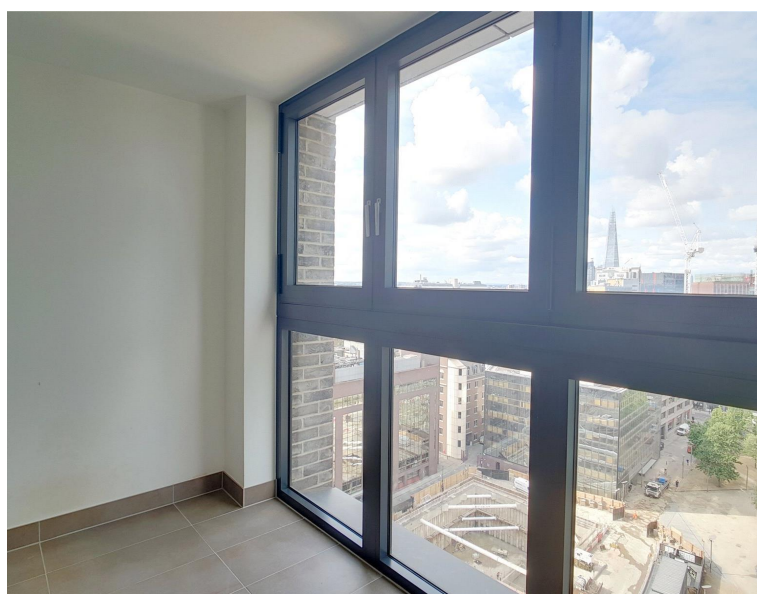




New Drum Street, London E1

Price £425 per week - Furnished







Description

A luxury 1 bedroom apartment in the popular Aldgate Place, on the doorstep of The City.

Situated on the 14th floor, this stunning 1 bedroom apartment is offered fully furnished and offers approximately 591 sq ft of living space. The apartment comprises 1 double bedroom with large fitted wardrobes, reception area with access onto a large winter garden, stunning South facing views towards Tower Bridge, contemporary bathroom with tiled finish, fully fitted kitchen with Siemens appliances and wood effect Amtico flooring.

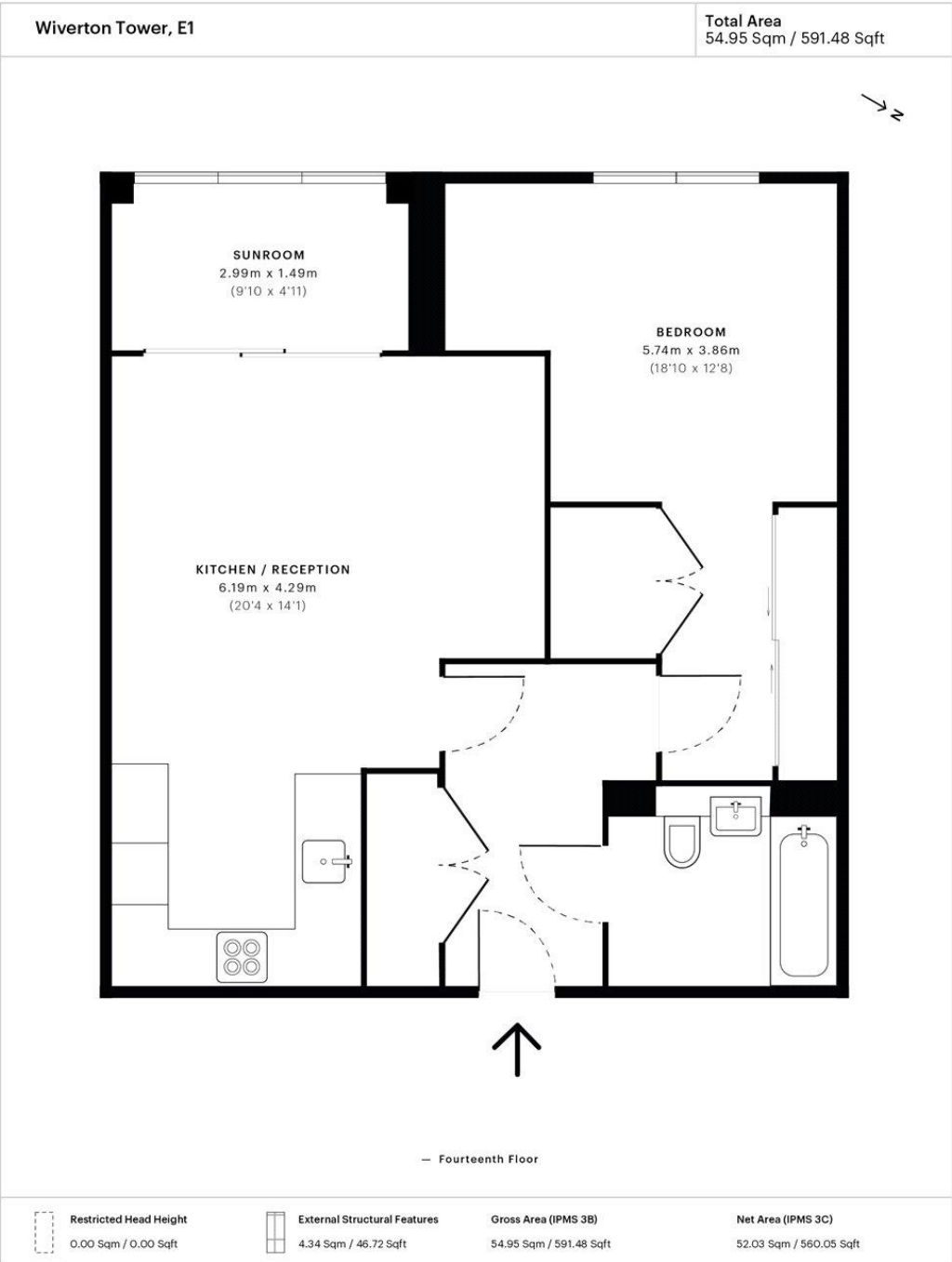
Aldgate Place is next to Aldgate East station and a short walk (approximately 0.3 miles) from the City of London. The developments benefits from 24 hour concierge and on-site gymnasium.

We understand that cooling / heating is delivered via a communal system for which separate charges apply.

- 1 Bedroom
- 1 Bathroom
- 14th floor
- Large Winter Garden
- 24 hour concierge
- On-site gymnasium
- 0.3 miles from Aldgate Station
- Approx. 591 sq ft (54.9 sq m)
- Furnished
- EPC: B

Floorplan

591 sq ft | 55 sq m



Spec floor plan captured for JLL, City Office on 19/07/2018 using 147,596,681 laser scan points, accurate to +/- 3cm. Produced in accordance with Royal Institution of Chartered Surveyors Property Measurement Standards, incorporating International Property Measurement Standard (IPMS). If you intend to rely on any measurement in a transaction you should perform your own checks. Plot/Gardens illustrative only and excluded from all area calculations. SpecID: 5b45ce3e7ae0cf0c772c4088

Restricted Head Height = Limited use area under 1.5m. **External Structural Features** = Balconies, terraces or verandas or similar. **IPMS 3B** = gross internal area measured from the internal faces of external walls, including walls/obstructions and External Structural Features, excluding stairwell area above/below the ground floor. **IPMS 3C** = net area of IPMS 3B excluding internal walls/obstructions and stairwell area above/below the ground floor. **Total Internal Area** = IPMS 3B gross area + stairwell area above/below ground floor of 0.00 Sqm / 0.00 Sqft.



City
25 Walbrook The Walbrook
Building,
London EC4N 8AF
020 7337 4000

Urban living, your way.

jll.co.uk/residential

© 2019 Jones Lang LaSalle IP, Inc. All rights reserved. All information contained herein is from sources deemed reliable; however, no representation or warranty is made to the accuracy thereof.

