



Casson Square, London SE1

Price £605 per week - Furnished







Description

A stunning 1 bedroom apartment in the sought after Southbank Place, a luxury development by Canary Wharf Group, in the heart of London's famous Southbank and moments from the London Eye.

This well-presented apartment offers an East facing aspect, and comprises a double bedroom with large fitted wardrobes, luxury bathroom, a spacious living area with a fully fitted kitchen, complete with Miele appliances and good storage space. The property has a high specification which includes comfort cooling, underfloor heating and smart home technology.

Southbank Place boasts exceptional amenities which include an on-site gym, swimming pool with spa, exclusive resident's lounge and 24-hour concierge. 8 Casson Square is in the heart of Southbank and on the doorstep of Waterloo Station (0.2 miles) and moments from the iconic London Eye. The City of London is within easy reach as is London's famous West End.

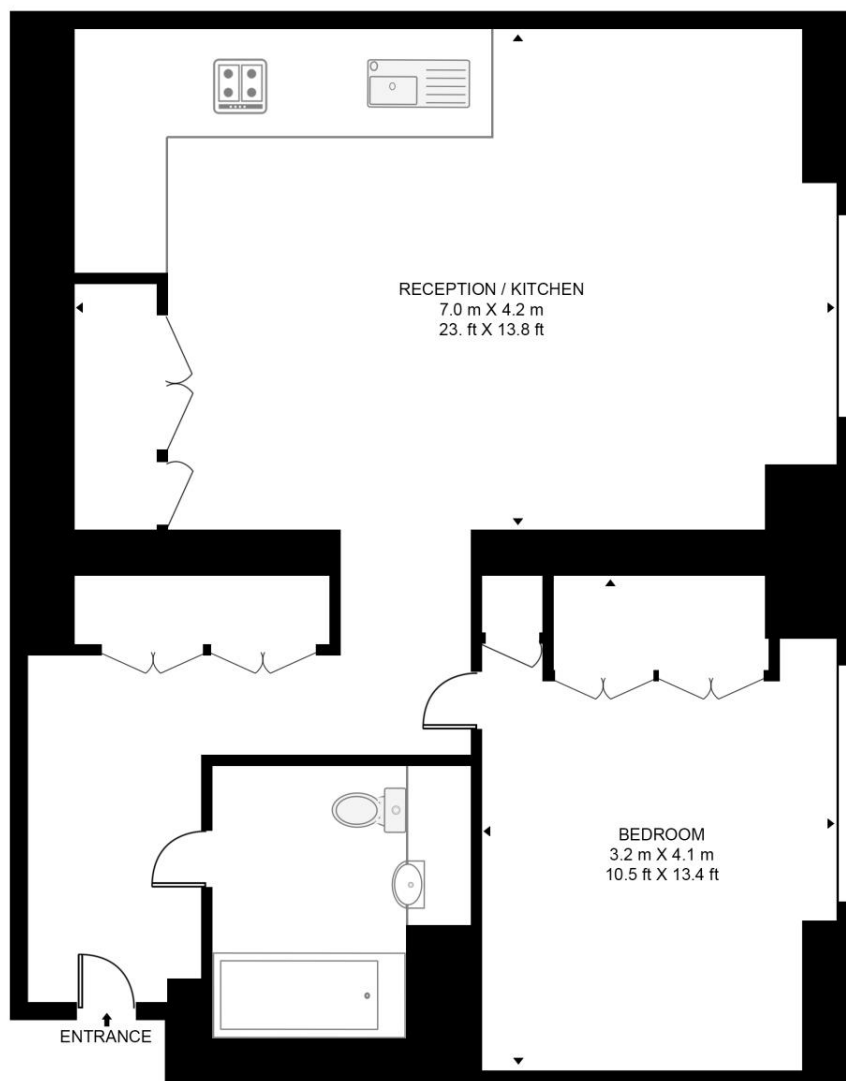
- 1 Bedroom
- 1 Bathroom
- 2nd Floor
- Easterly views towards The Shard
- Luxury fitted kitchen with Miele appliances
- 24 hour concierge
- Luxury residents facilities
- Approx. 606 sq ft (56.3 sq m)
- 0.2 mile from Waterloo Station
- Furnished

Floorplan

606 sq ft | 56 sq m

CASSON SQUARE

APPROXIMATE GROSS INTERNAL FLOOR AREA 606 SQ.FT (56.3 SQ.M)



SECOND FLOOR

HDVA

This floor plan has been defined by the RICS Code of Measurement. This floor plan and all others are for approximate representative purposes only and upon usage is agreed to as such by the client.

WWW: hdvirtualart.com | TEL: 0203.974.1567 | EMAIL: info@hdvirtualart.com

City
25 Walbrook The Walbrook
Building,
London EC4N 8AF
020 7337 4000

Urban living, your way.

jll.co.uk/residential

© 2019 Jones Lang LaSalle IP, Inc. All rights reserved. All information contained herein is from sources deemed reliable; however, no representation or warranty is made to the accuracy thereof.

