

Moor Lane, London EC2Y
Price £850 per week - Furnished







Description

This stunning 2 bedroom apartment is fully furnished to a high standard and boasts an extremely high specification with comfort cooling and smart home technology complete with central control panel, iPod docking system and ceiling speakers.

The property comprises 2 double bedrooms each with large fitted wardrobes and en-suite to master, 2 luxury bathrooms with marble finish and porcelain flooring, contemporary open plan kitchen with composite stone work counter and Miele appliances, dark oak flooring, spacious reception area with access to large balcony and floor to ceiling windows.

The Heron is located in the heart of the City of London. The development also benefits from an on-site gym, exclusive resident's club, 24 hour security and concierge.

We understand that cooling / heating is delivered via a communal system for which separate charges apply.

- 2 Bedrooms
- 2 Bathrooms
- 22nd Floor
- Balcony
- On-site leisure facilities
- 24 hour concierge
- 0.5 miles from Bank Station
- Approx. 898 sq ft (83.4 sq m)
- Furnished
- EPC: C

Floorplan

898 sq ft | 83 sq m

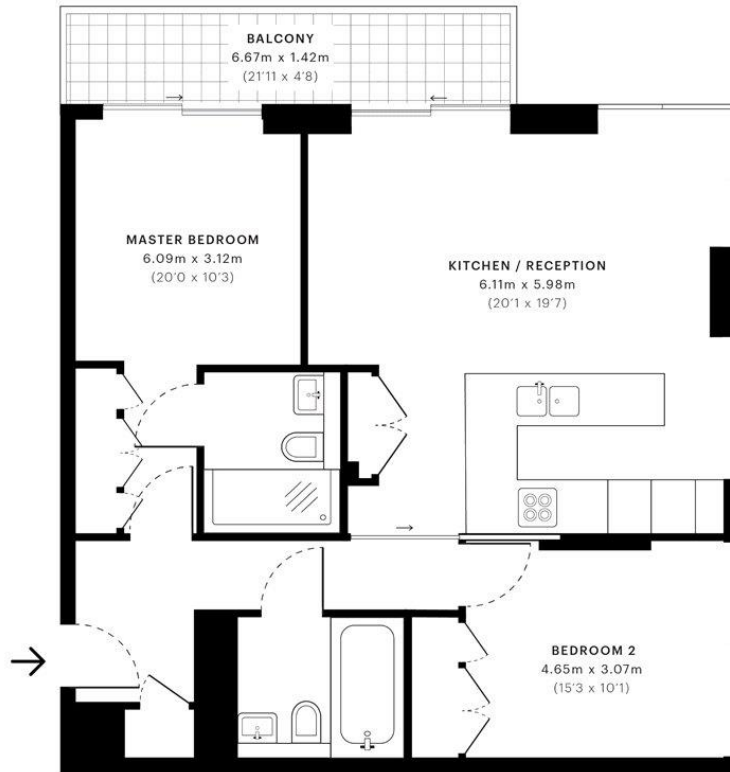


Moor Lane, EC2Y

CAPTURE DATE
13/05/2019

LASER SCAN POINTS
37,060,422

GROSS INTERNAL AREA
83.4 Sqm / 898.1 Sqft



 GROSS INTERNAL AREA
The footprint of the property
83.4 Sqm / 898.1 Sqft

 NET AREA (INTERNAL)
Excludes walls and external features
77.9 Sqm / 838.3 Sqft

 EXTERNAL STRUCTURAL FEATURES
Balconies, terraces, verandas etc.
9.5 Sqm / 102.0 Sqft

 RESTRICTED HEAD HEIGHT
Limited use area under 1.5m
0.0 Sqm / 0.0 Sqft



Spec floor plans are produced in accordance with the Royal Institution of Chartered Surveyors' Property Measurement Standards. Plots and gardens are illustrative only and are excluded from all area calculations. Due to rounding, numbers may not add up precisely.

IPMS 3B RESIDENTIAL
92.9 Sqm / 1000.0 Sqft
IPMS 3C RESIDENTIAL
87.4 Sqm / 940.3 Sqft

SPEC ID
5c9a658a8c6b2701ac4f859f

City
25 Walbrook The Walbrook
Building,
London EC4N 8AF
+4420 7337 4000

Urban living, your way.

jll.co.uk/residential

© 2019 Jones Lang LaSalle IP, Inc. All rights reserved. All information contained herein is from sources deemed reliable; however, no representation or warranty is made to the accuracy thereof.

