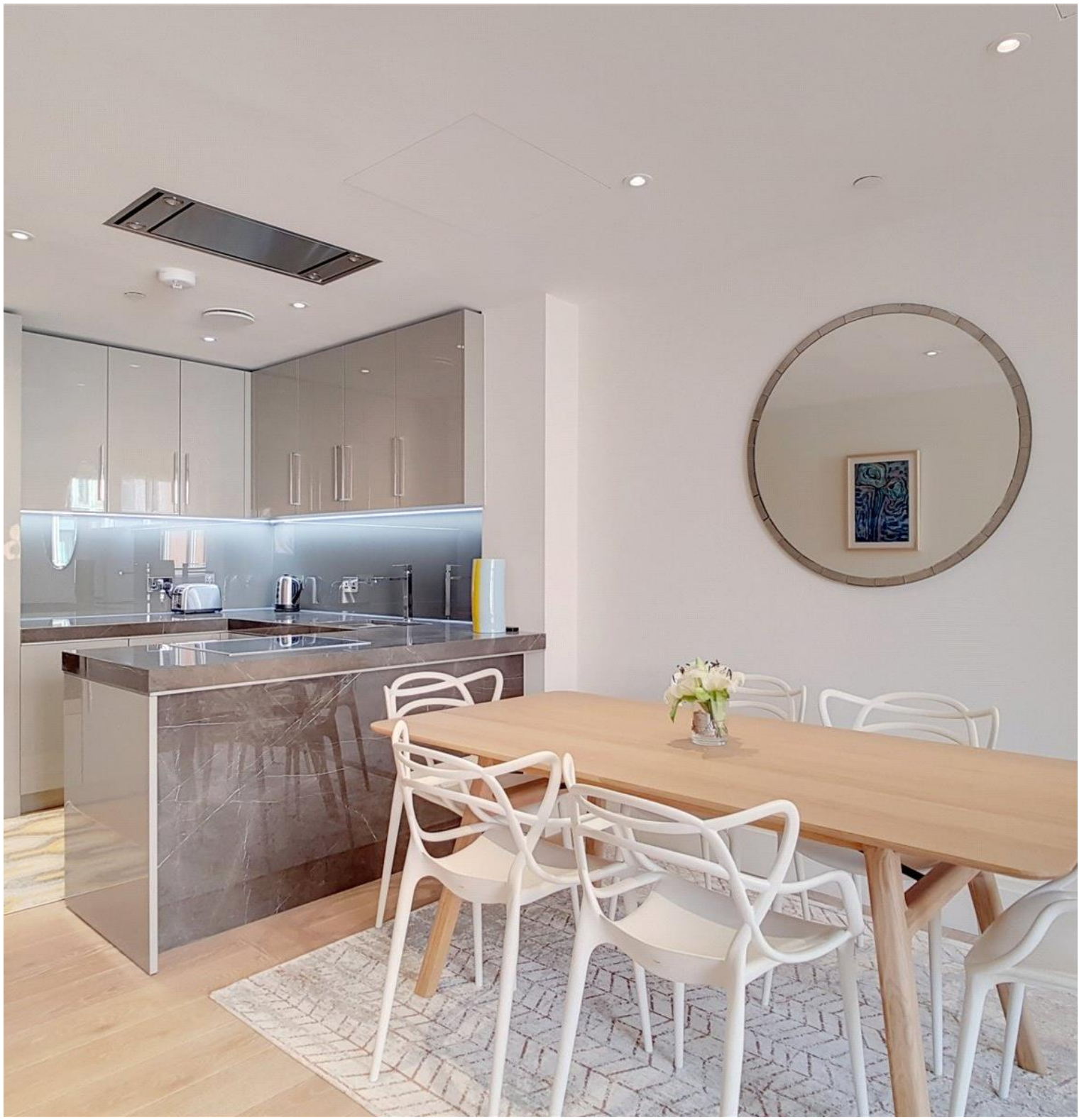




Milford House, London WC2R

Price £1,400 per week - Furnished







Description

A stunning 2 bedroom apartment in the prestigious 190 Strand, Westminster, WC2.

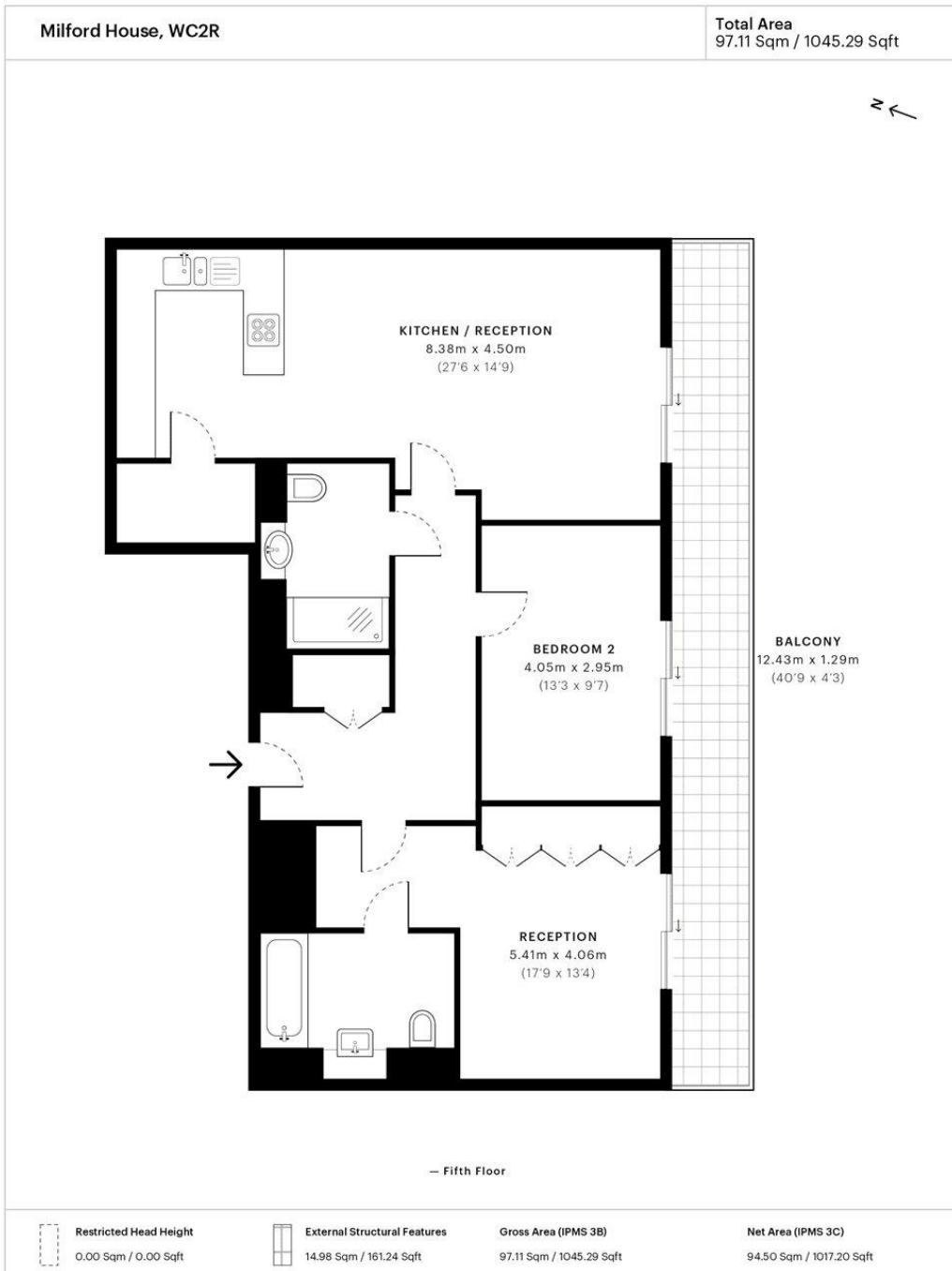
This spacious 2 bedroom apartment is well furnished and situated on the 5th floor. The property comprises 2 double bedrooms with large fitted wardrobes and en-suite to master, 2 luxury bathrooms with marble finish, large terrace, spacious reception and fitted kitchen and excellent storage space.

The development offers on site leisure facilities, including gymnasium, swimming pool, private cinema, business / conference facilities and 24 hour concierge. 190 Strand is situated on the world famous Strand, Westminster WC2, (approx) 0.2 miles from Temple station and (approx) 0.5 miles from Covent Garden.

- 2 Bedrooms
- 2 Bathrooms
- Large terrace
- 24 Hour concierge
- On site leisure facilities, including gymnasium & swimming pool
- 0.2 mile from Temple underground station
- Approx. 1045 sq ft (97.1 sq m)
- Furnished
- EPC: B

Floorplan

sq ft | sq m



Spec floor plan captured for JLL, City Office on 16/07/2018 using 254,249,123 laser scan points, accurate to +/- 3cm. Produced in accordance with Royal Institution of Chartered Surveyors Property Measurement Standards, incorporating International Property Measurement Standard (IPMS). If you intend to rely on any measurement in a transaction you should perform your own checks. Plot/Gardens illustrative only and excluded from all area calculations. SpecID: 5b4747944e36500c5270c121

Restricted Head Height = Limited use area under 1.5m. **External Structural Features** = Balconies, terraces or verandas or similar. **IPMS 3B** = gross internal area measured from the internal faces of external walls, including walls/obstructions and External Structural Features, excluding stairwell area above/below the ground floor. **IPMS 3C** = net area of IPMS 3B excluding internal walls/obstructions and stairwell area above/below the ground floor. **Total Internal Area** = IPMS 3B gross area + stairwell area above/below ground floor of 0.00 Sqm / 0.00 Sqft.



City
25 Walbrook The Walbrook
Building,
London EC4N 8AF
+4420 7337 4000

Urban living, your way.

jll.co.uk/residential

© 2019 Jones Lang LaSalle IP, Inc. All rights reserved. All information contained herein is from sources deemed reliable; however, no representation or warranty is made to the accuracy thereof.

