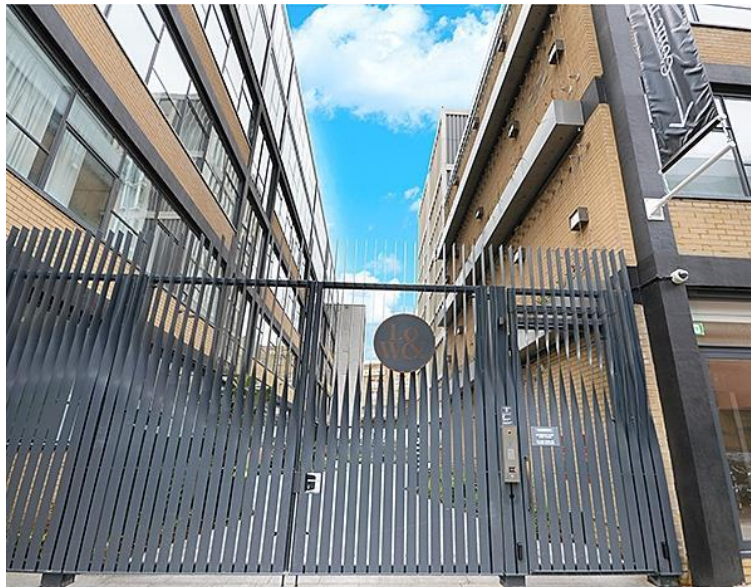
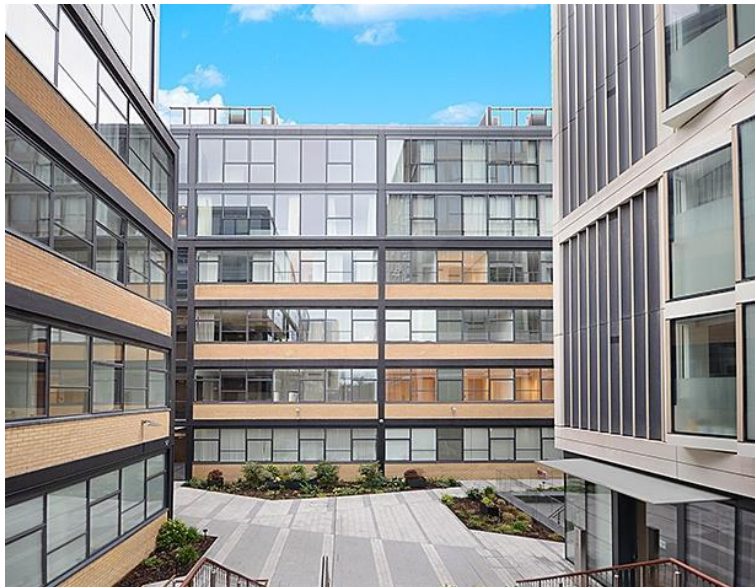




3 Long Street, Long And Waterson, Lon
Price £695 per week - Furnished







Description

A rarely available 2 bedroom apartment to rent in the sought after Long & Waterson, situated in the heart of Shoreditch, E2.

Offered fully furnished, this luxury 2 bedroom apartment comprises a spacious reception area, open plan fitted kitchen with Miele appliances, 2 double bedrooms with large fitted wardrobes to master, 1 luxury bathroom, a high specification with comfort cooling, wood flooring and excellent storage space.

The development is well situated for the City of London and is in the heart of Shoreditch, (approx.) 0.3 miles from Hoxton Station, (approx.) 0.6 miles from Old Street Station and (approx.) 0.3 miles from Hoxton Square. Long & Waterson is a luxury development from Izaki Group Investments which boasts a high end specification and amazing on site amenities which include 24 hour concierge, 10,000 sq ft of private landscape, on site gym, spa and private cinema, and private work and meeting place.

Floorplan

sq ft | sq m

City
25 Walbrook The Walbrook
Building,
London EC4N 8AF
+4420 7337 4000

Urban living, your way.

jll.co.uk/residential

© 2019 Jones Lang LaSalle IP, Inc. All rights reserved. All information contained herein is from sources deemed reliable; however, no representation or warranty is made to the accuracy thereof.

