

# Christian Street, London E1

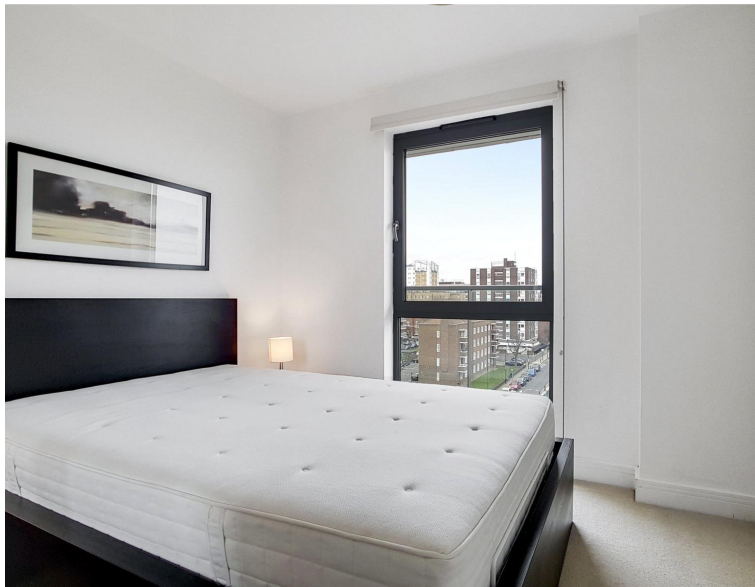
Price £380 per week - Furnished











## Description

A well-presented 1 bedroom apartment in the popular Hodgeson House, part of the Space E1 development.

Situated on the 5th floor, the apartment is offered fully furnished and comprises spacious reception area with semi-open plan fitted kitchen, 1 double bedroom with fitted wardrobes, large balcony with stunning views towards the City, contemporary bathroom and wood flooring.

The development benefits from an on-site gym and concierge, and is conveniently located for Shadwell DLR and Shadwell Overground stations (approximately 0.4 miles) in zone 2.

As well as paying the rent, you may also be required to make the following permitted payments. If your tenancy does not qualify as an AST, additional fees may apply. Please visit [jll.co.uk/fees](http://jll.co.uk/fees) for details of fees which may be payable when renting a property.

- - 1 Bedroom
- - 1 Bathroom
- - 5th Floor
- - Large Balcony
- - Wood flooring
- - 12 hour concierge
- - 0.5 miles from Tower Gateway DLR
- - Approx. 486 sq ft (44.6 sq m)
- - Furnished
- - EPC: B

# Floorplan

486 sq ft | 45 sq m

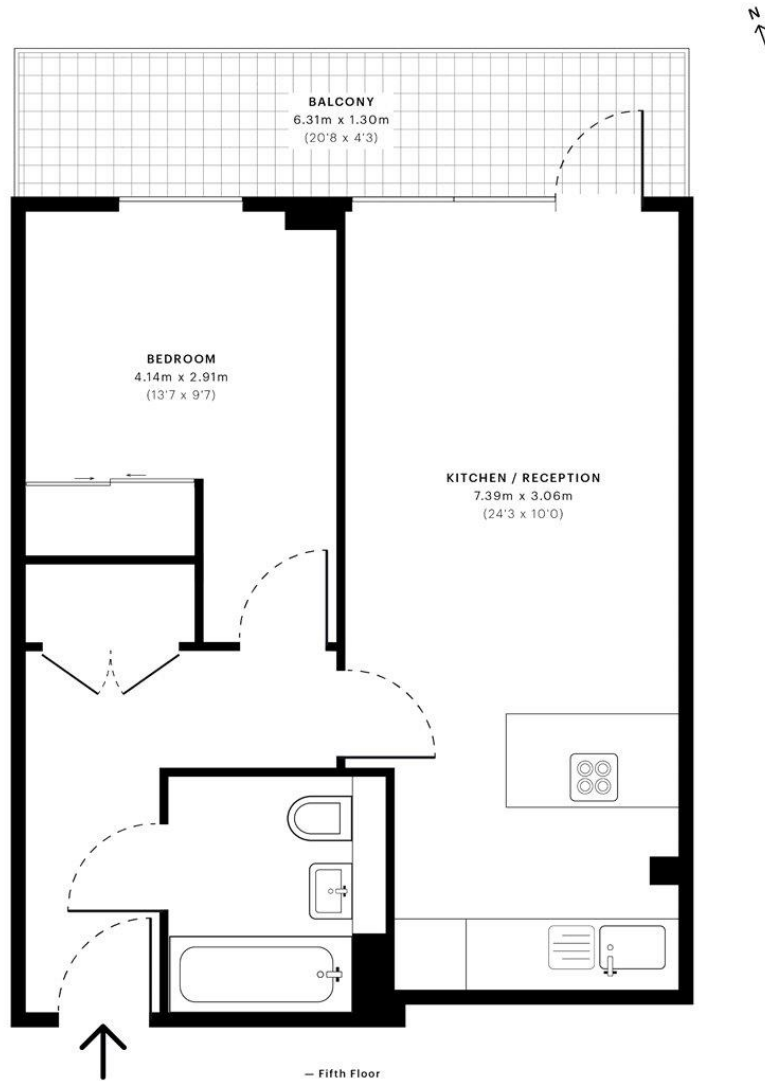


Hodgeson House, E1

CAPTURE DATE  
08/03/2019

LASER SCAN POINTS  
28,142,176

GROSS INTERNAL AREA  
44.6 Sqm / 480.1 Sqft



GROSS INTERNAL AREA  
The footprint of the property  
44.6 Sqm / 480.1 Sqft

NET AREA (INTERNAL)  
Excludes walls and external features  
43.4 Sqm / 467.3 Sqft

EXTERNAL STRUCTURAL FEATURES  
Balconies, terraces, verandas etc.  
8.2 Sqm / 88.6 Sqft

RESTRICTED HEAD HEIGHT  
Limited use areas under 1.5m  
0.0 Sqm / 0.0 Sqft



Spec floor plans are produced in accordance with Royal Institution of Chartered Surveyors Property Measurement Standards. If you intend to rely on any measurement in a transaction you should perform your own checks. Plot/Gardens illustrative only and excluded from all area calculations.



IPMS 3B RESIDENTIAL  
52.8 Sqm / 568.7 Sqft

IPMS 3C RESIDENTIAL  
51.6 Sqm / 555.9 Sqft

SPEC ID  
5c80f9f7257403666db870b8

City  
25 Walbrook The Walbrook  
Building,  
London EC4N 8AF  
+4420 7337 4000

*Urban living, your way.*

[jll.co.uk/residential](http://jll.co.uk/residential)

© 2019 Jones Lang LaSalle IP, Inc. All rights reserved. All information contained herein is from sources deemed reliable; however, no representation or warranty is made to the accuracy thereof.

