



Commercial Street, London E1

Price £695 per week - Furnished







Description

A 2 bedroom apartment in the sought after Cityscape development.

This 2 bedroom apartment is situated on the 5th floor and boasts spacious reception with views over the landscaped courtyard and on towards The City skyline, 2 double bedrooms with fitted wardrobes and en-suite to master bedroom, fully fitted open plan kitchen, generous sized balcony, 2 contemporary bathrooms with porcelain and glass tiling and wooden flooring. The apartment benefits from floor to ceiling windows maximising natural light and views.

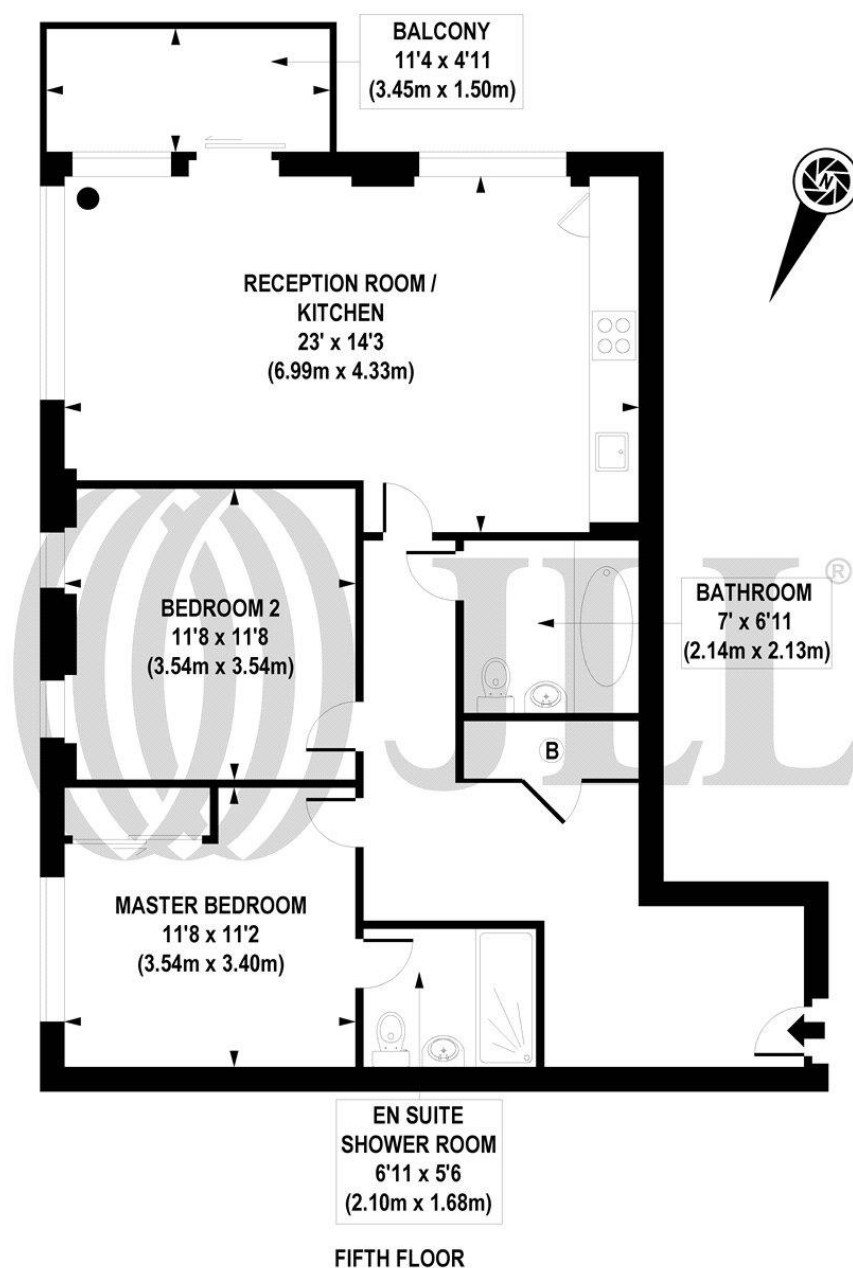
The development is situated next Aldgate East Station and a short walk from the City of London. Located in Zone 1, the development is close to Aldgate (0.3 miles) and Liverpool Street (0.6 miles) stations. Residents also benefit from 24 hour concierge service and on site gymnasium.

As well as paying the rent, you may also be required to make the following permitted payments. If your tenancy does not qualify as an AST, additional fees may apply. Please visit jll.co.uk/fees for details of fees which may be payable when renting a property.

- ul>
- 2 Bedrooms
- 2 Bathrooms
- 5th Floor
- Balcony
- Floor to ceiling windows
- 24 hour concierge
- 0.3 mile to Aldgate Station
- Approx. 858 sq ft (79.7 sq m)
- Furnished
- EPC: B

Floorplan

858 sq ft | 80 sq m



APPROXIMATE GROSS INTERNAL AREA 858 sq. ft / 79.71 sq. m

Floorplan is for illustrative purposes only and is not to scale.
Every attempt has been made to ensure the accuracy of the floorplan shown, however all measurements, fixtures, fittings and data shown are an approximate interpretation for illustrative purposes only.
Liability for errors, omissions or mis-statement through negligence or otherwise is hereby excluded.

CP CREATIVE
PROPERTY MARKETING

City
25 Walbrook The Walbrook
Building,
London EC4N 8AF
+4420 7337 4000

Urban living, your way.

jll.co.uk/residential

© 2019 Jones Lang LaSalle IP, Inc. All rights reserved. All information contained herein is from sources deemed reliable; however, no representation or warranty is made to the accuracy thereof.

