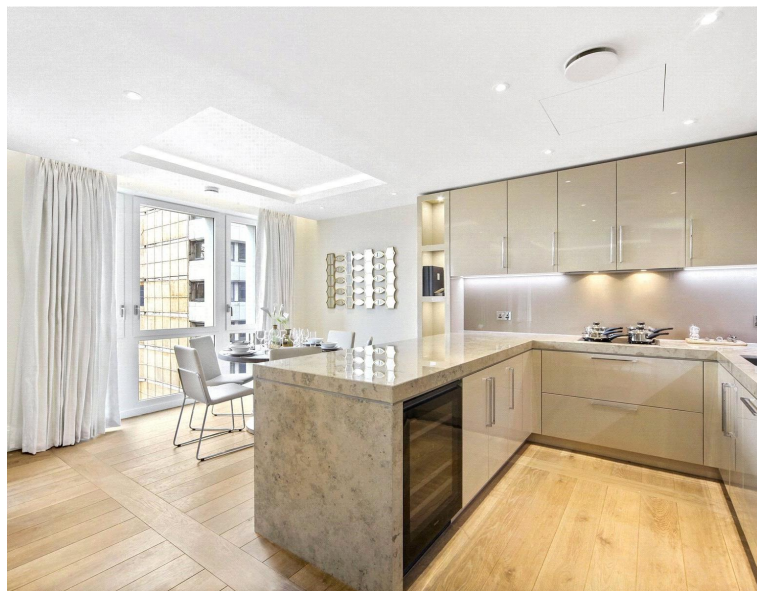
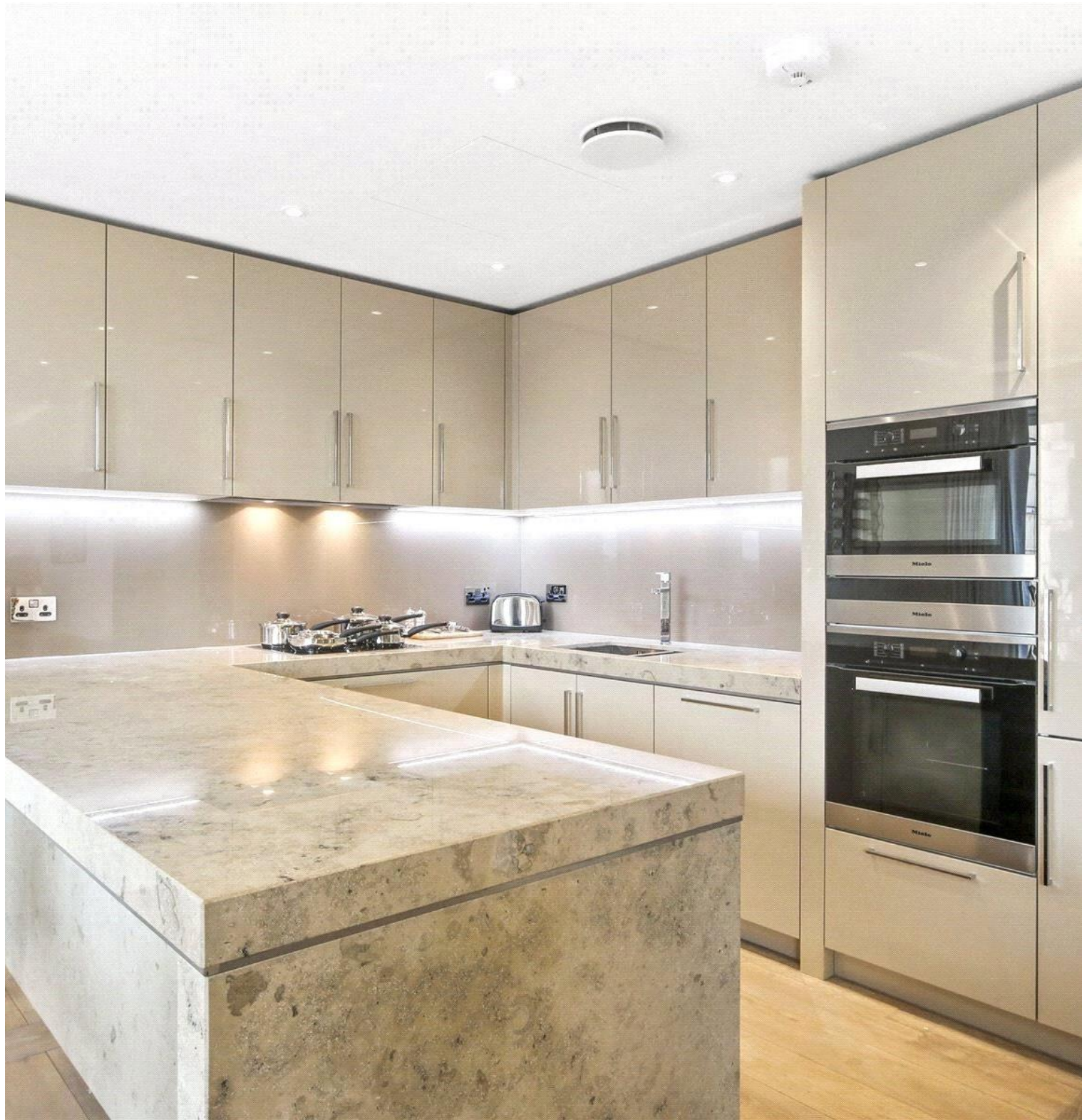
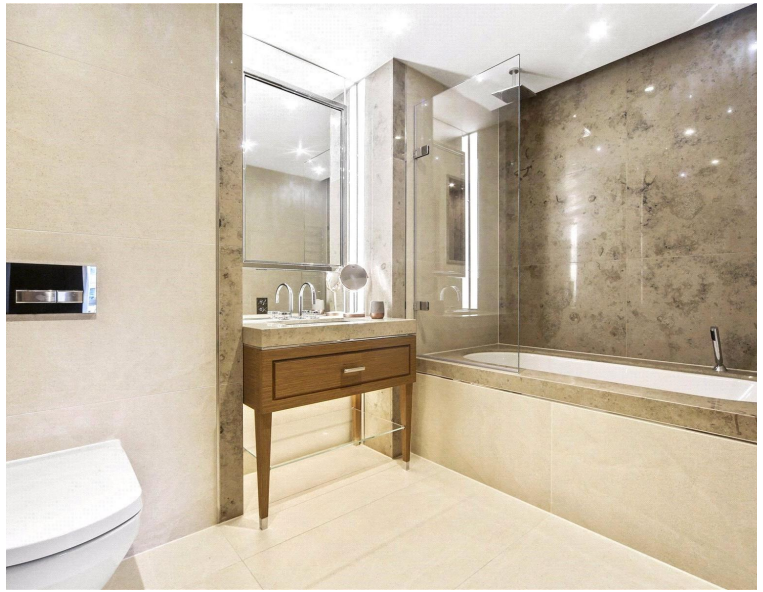
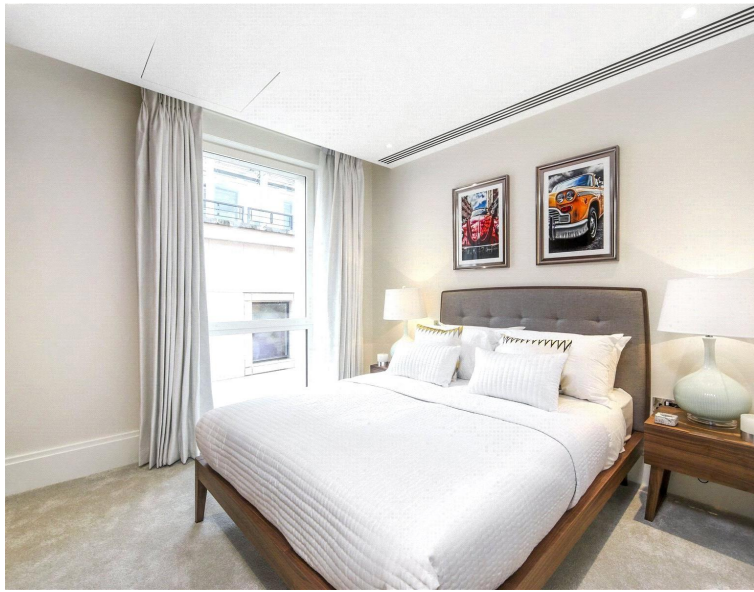
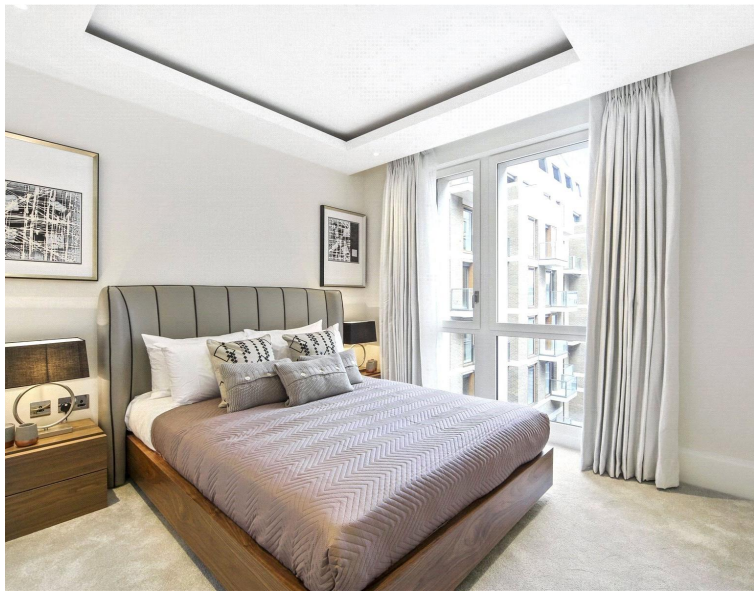


Arundel Street, London WC2R

Price £1,500 per week - Furnished







Description

A luxurious 5th floor apartment in the sought after 190 Strand, Westminster, WC2.

With 1031 sq ft this stunning 2 bedroom apartment has amazing living space. The property comprises a large reception and balcony with stunning views of the Thames towards the London Eye and Houses of Parliament, 2 double bedrooms with fitted wardrobes to master, 2 luxury bathrooms, fully fitted kitchen and wooden flooring.

The development offers on site leisure facilities, including gymnasium, swimming pool, private cinema, business / conference facilities and 24 hour concierge. The development is situated on the world famous Strand, Westminster WC2, (approx) 0.2 miles from Temple station and (approx) 0.5 miles from Covent Garden.

As well as paying the rent, you may also be required to make the following permitted payments. If your tenancy does not qualify as an AST, additional fees may apply. Please visit jll.co.uk/fees for details of fees which may be payable when renting a property.

- - 2 Bedrooms
- - 2 Bathrooms
- - Balcony with views of the Thames
- - Wooden flooring
- - On site leisure facilities and 24 hour concierge
- - 0.2 miles from Temple station
- - Approx. 1,031 sq ft (95.8 sq m)
- - Leasehold
- - EPC: B

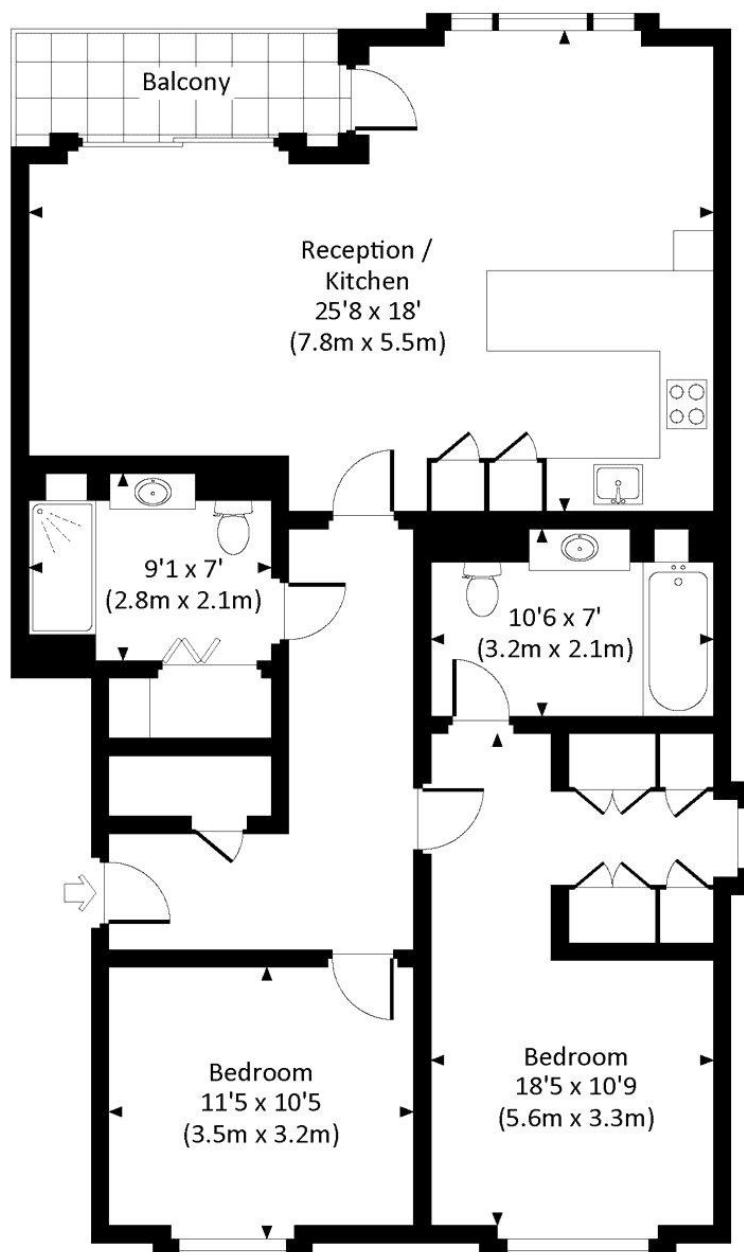
Floorplan

1,031 sq ft | 96 sq m

TEMPLE HOUSE, STRAND, WC2R

Approx. gross internal area

1031 Sq Ft. / 95.8 Sq M.



FIFTH FLOOR



All measurements have been made in accordance with RICS Code of Measuring Practice which are approximate only and only for illustrative purposes. For the avoidance of doubt, Dowling Jones Design shall not be liable for any reliance on these measurements. © 2018 www.dowlingjones.com 020 7610 9933

City
25 Walbrook The Walbrook
Building,
London EC4N 8AF
+4420 7337 4000

Urban living, your way.

jll.co.uk/residential

© 2019 Jones Lang LaSalle IP, Inc. All rights reserved. All information contained herein is from sources deemed reliable; however, no representation or warranty is made to the accuracy thereof.

