



## 3 Long Street, London E2

Asking price £630,000 Leasehold







## Description

Guide price £630,000 - £650,000

A bright two bedroom apartment in the desirable Long & Waterson a luxurious development in the heart of Shoreditch.

The apartment is set over approx. 539 sq ft and comprises of an open plan reception with fully fitted kitchen, master bedroom with fitted wardrobes, second double bedroom, contemporary bathroom, storage cupboard.

Long & Waterson is a luxury development that boasts a 24 hour concierge service, fully equipped gym, sauna, steam room, treatment room, cinema room with excellent sound system.

The development is well situated for the City of London and is in the heart of Shoreditch, (approx.) 0.3 miles from Hoxton Station, (approx.) 0.6 miles from Old Street Station and (approx.) 0,2 miles from the famous Columbia Road Flower market

Leasehold: 995 years remaining, EPC: C

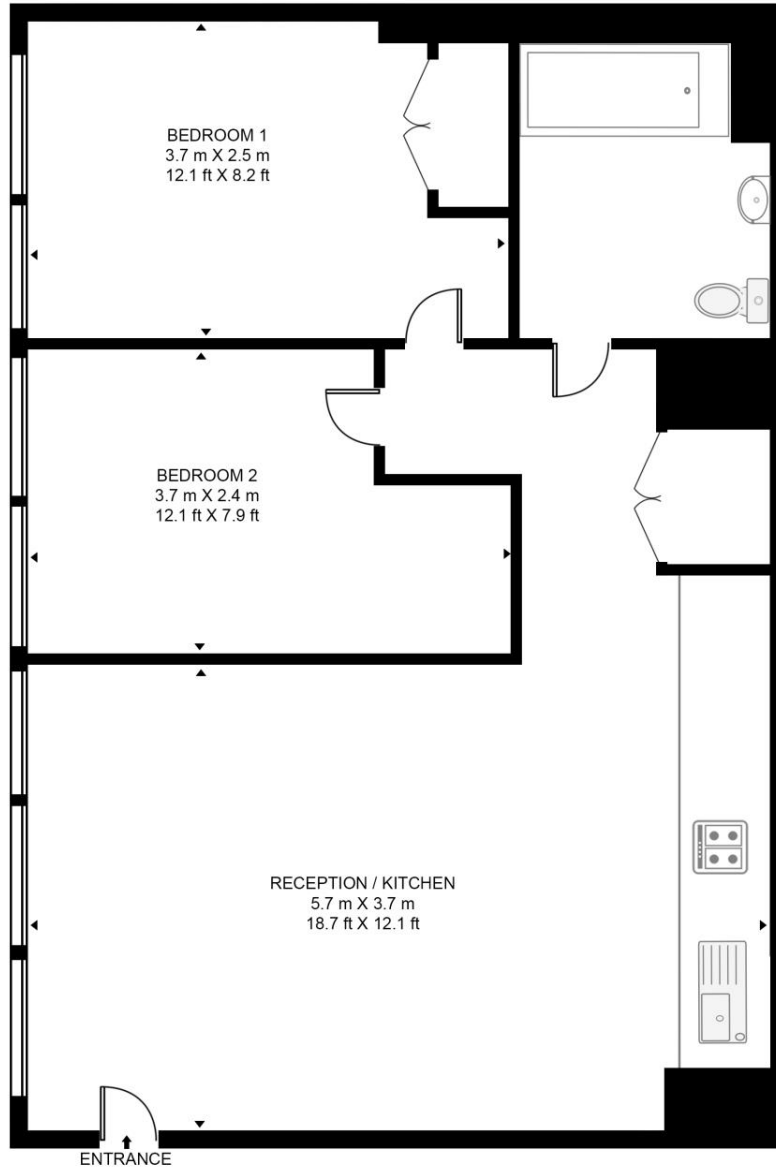
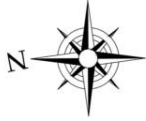
- 2 Bedrooms
- 1 Bathroom
- 24 Hour concierge
- Residents gym
- Residents spa
- Residents Cinema
- Leasehold
- EPC: C
- Approx. 539 sq ft

# Floorplan

539 sq ft | 50 sq m

## LONG STREET

APPROXIMATE GROSS INTERNAL FLOOR AREA 539 SQ.FT (50.1 SQ.M)



GROUND FLOOR



This floor plan has been defined by the RICS Code of Measurement. This floor plan and all others are for approximate representative purposes only and upon usage is agreed to as such by the client.  
WWW: [hdvirtualart.com](http://hdvirtualart.com) | TEL: 0203.974.1567 | EMAIL: [info@hdvirtualart.com](mailto:info@hdvirtualart.com)

City  
25 Walbrook The Walbrook  
Building,  
London EC4N 8AF  
+4420 7337 4000

*Urban living, your way.*

[jll.co.uk/residential](http://jll.co.uk/residential)

© 2019 Jones Lang LaSalle IP, Inc. All rights reserved. All information contained herein is from sources deemed reliable; however, no representation or warranty is made to the accuracy thereof.

