



**City Road, London EC1V**  
Price £1,095 per week - Furnished







## Description

A rare opportunity to rent a Constellation apartment within Old Street's most popular development, the Atlas Building.

Situated on the 34th floor, the spacious 2 bedroom apartment boasts approximately 988 sq. ft of living space and is furnished to an exceptional standard. This stunning apartment comprises a capacious open plan living and dining area, fully fitted kitchen, large balcony plus additional terrace with access from all rooms, stunning South / Western views of the City skyline, London Eye and West London, two luxury bathrooms and excellent storage space.

The Atlas Building is next to Old Street station (0.1 mile) and ideally situated for the City, Hoxton, Shoreditch and Angel. The development offers top of the range amenities which includes pool, spa, gymnasium, private cinema room, resident's only business lounge and 24 hour concierge.

We understand that cooling / heating is delivered via a communal system for which separate charges apply.

Rent is payable on a monthly basis and you may be required to pay more than a month's rent in advance, depending on your circumstances. You will be required to pay a 1 week holding de

- 2 Bedrooms
- 2 Bathrooms & Seperate W/C
- 34th floor
- Private balcony
- On-site leisure facilities including pool, spa and cinema
- 24 hour concierge
- 0.1 miles from Old Street Station
- Approx. 965 sq ft (89 sq m)
- Furnished
- Leasehold

# Floorplan

988 sq ft | 92 sq m

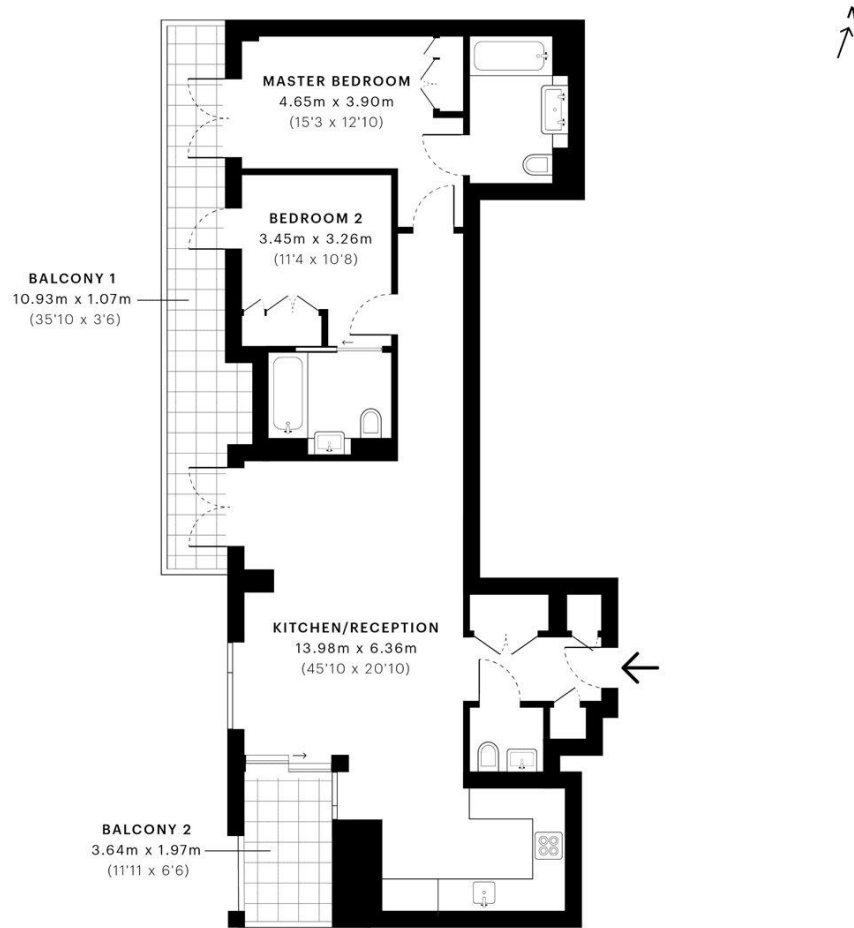


City Road, EC1V

CAPTURE DATE  
01/08/2019

LASER SCAN POINTS  
35,741,233

GROSS INTERNAL AREA  
89.7 Sqm / 965.9 Sqft



— Thirty-Fourth Floor

GROSS INTERNAL AREA  
The footprint of the property  
**89.7 Sqm / 965.9 Sqft**

NET AREA (INTERNAL)  
Excludes walls and external features  
**86.1 Sqm / 926.9 Sqft**

EXTERNAL STRUCTURAL FEATURES  
Balconies, terraces, verandas etc.  
**18.9 Sqm / 203.1 Sqft**

RESTRICTED HEAD HEIGHT  
Limited use area under 1.5m  
**0.0 Sqm / 0.0 Sqft**



Spec floor plans are produced in accordance with the Royal Institution of Chartered Surveyors' Property Measurement Standards. Plots and gardens are illustrative only and are excluded from all area calculations. Due to rounding, numbers may not add up precisely.

IPMS 3B RESIDENTIAL  
108.6 Sqm / 1169.0 Sqft

IPMS 3C RESIDENTIAL  
105.0 Sqm / 1130.0 Sqft

SPEC ID  
5d4195e8ed67040a41a6ae21

City  
25 Walbrook The Walbrook  
Building,  
London EC4N 8AF  
+4420 7337 4000

*Urban living, your way.*

[jll.co.uk/residential](http://jll.co.uk/residential)

© 2019 Jones Lang LaSalle IP, Inc. All rights reserved. All information contained herein is from sources deemed reliable; however, no representation or warranty is made to the accuracy thereof.

