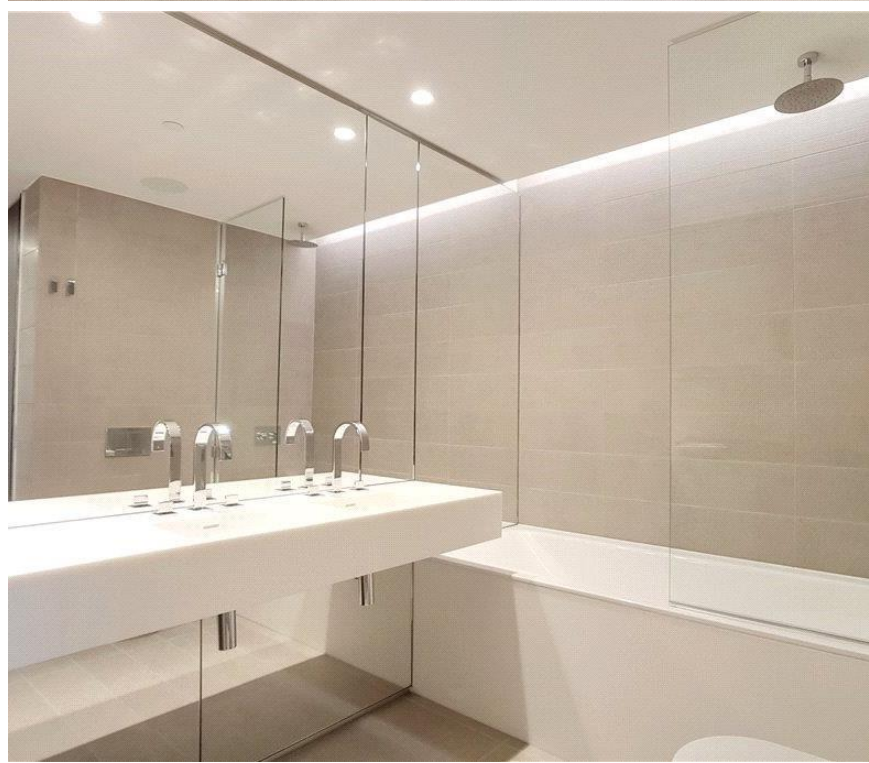




Rathbone Square, London W1T

Guide price £1,850,000 Leasehold





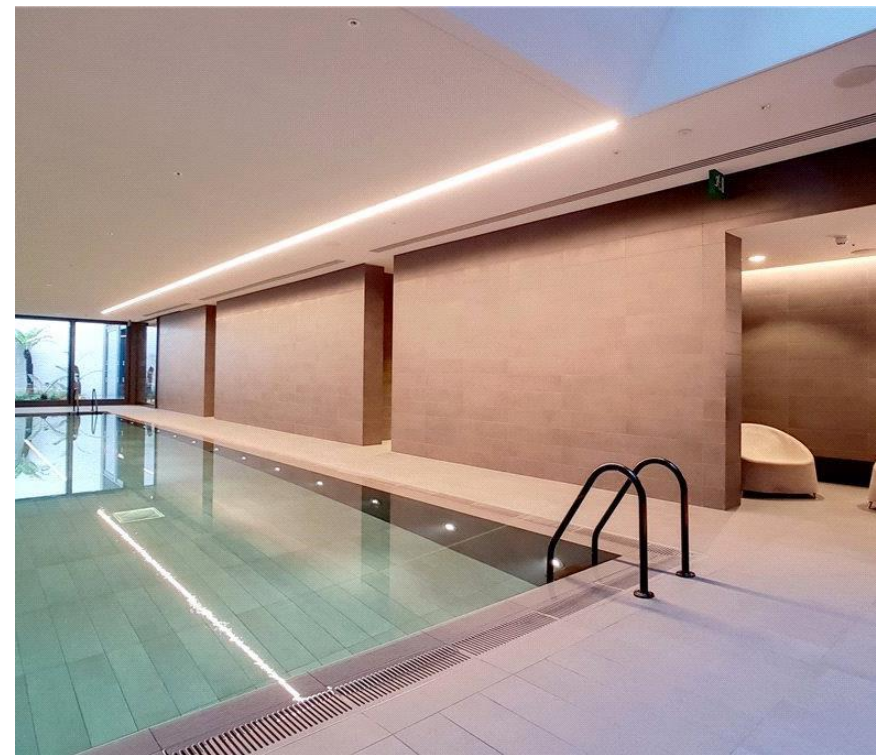
Description

The property comprises master bedroom with en suite bathroom, second double bedroom, one shower room, reception room and a fully fitted, open plan kitchen and balcony.

Residents will benefit from access to a 24 hour concierge, beautiful gardens, residents' lounge, wine storage and tasting room, screening room, gymnasium, swimming pool, sauna and steam room.

Rathbone Square has been designed to offer a tranquil environment, whilst being ideally located moments from Oxford Street. Situated in the heart of London's West End, ideal for transport links in and around London, with The City and West London being just 10 minutes away via the underground.

- 2 Double bedrooms
- 1 Bathroom (en suite)
- 1 Shower room
- 24 Hour concierge
- Gym
- 0.2 mile from Tottenham Court Road station
- Approx. 773 sq ft (71 sq m)
- Leasehold
- EPC: B



Floorplan

773 sq ft | 71.8 sq m



This floor plan was captured for JLL, Knightsbridge on 06/03/2018. Architectural features to scale, derived from millions of laser scan points, accurate to +/- 3cm and produced in accordance with the Royal Institution of Chartered Surveyors Property Measurement standards. Gross Internal Area is measured from the internal faces of external walls and includes internal walls/obstructions. Net Internal Area excludes internal walls/obstructions. Please perform your own checks before relying on these figures in any transaction.



City
25 Walbrook,
London EC4N 8AF
0207 248 6040

Urban living, your way.

jll.co.uk/residential

© 2019 Jones Lang LaSalle IP, Inc. All rights reserved. All information contained herein is from sources deemed reliable; however, no representation or warranty is made to the accuracy thereof.

