



High Street, London E15

Guide price £310,000 Leasehold





Description

HELP TO BUY AVAILABLE

This one bedroom flat is set within the ground floor of Central House, a well known block, close to the Queen Elizabeth Olympic Park and Park Pudding Mill Lane station.

The entire ground floor of this development has been redeveloped into new build flats offering a fantastic finish in a great location. Benefits also include a concierge service and a gym with sauna.

The building is located a few minutes' walk from Pudding Mill Lane DLR station with connections to Canary Wharf, the City and Stratford.

Early viewings are highly recommended



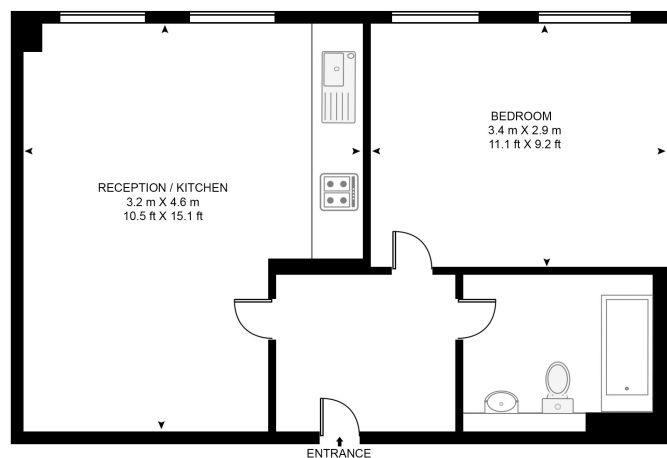
- 1 Bedroom
- 1 Bathroom
- Ground floor
- Approx. 356 sq ft (33.1 sq m)
- HTB
- Close to transport links
- Close to amenities
- EPC: B

Floorplan

356 sq ft | 33 sq m

CENTRAL HOUSE, 32-66 HIGH STREET

APPROXIMATE GROSS INTERNAL FLOOR AREA 356 SQ.FT (33.1 SQ.M)



GROUND FLOOR

HDVA

This floor plan has been defined by the RICS Code of Measurement. This floor plan and all others are for approximate representative purposes only and upon usage is agreed to as such by the client.
WWW: hdvirtualart.com | TEL: 0203.974.1567 | EMAIL: info@hdvirtualart.com

Stratford
5 Station Street,
London E15 1DA
020 3147 1500

Urban living, your way.

jll.co.uk/residential

© 2019 Jones Lang LaSalle IP, Inc. All rights reserved. All information contained herein is from sources deemed reliable; however, no representation or warranty is made to the accuracy thereof.

