

THE  
**LOCK**  
AT GREENFORD QUAY

LONDON • UB6 0GQ

HOST BROCHURE

THE LOCK

AT GREENFORD QUAY

# Live Life

## by The Lock

AT GREENFORD QUAY

**The Lock at Greenford Quay is located within a thriving new waterfront neighbourhood in West London, uniquely characterised by the distinctive architecture of its industrial past.**

This collection of 1, 2 and 3 bedroom concierge-served apartments provides the perfect balance between a busy London lifestyle and the relaxing outdoors.

Each spacious home features a balcony overlooking landscaped gardens or the beautiful Grand Union Canal, perfect for taking a break when working from home, or simply enjoying some fresh air. The stunning residents' rooftop terrace further enhances these spectacular views, while excellent transport links ensure you stay connected to the city.





THE LOCK

AT GREENFORD QUAY

# Live life in tranquillity

Where else can you find an abundance of renowned green parks, tranquil canal-side views, culinary delights and easy access to the bright lights of central London?

The nearby M4 corridor, coined as a major technology hub, gives direct links to Reading, Oxford and the countryside beyond.

WEMBLEY ARENA

THE CITY

EALING

HORSENDEN HILL

THE LOCK  
AT GREENFORD QUAY  
**COBALT HOUSE**

THE LOCK  
AT GREENFORD QUAY  
**CERULEAN HOUSE**

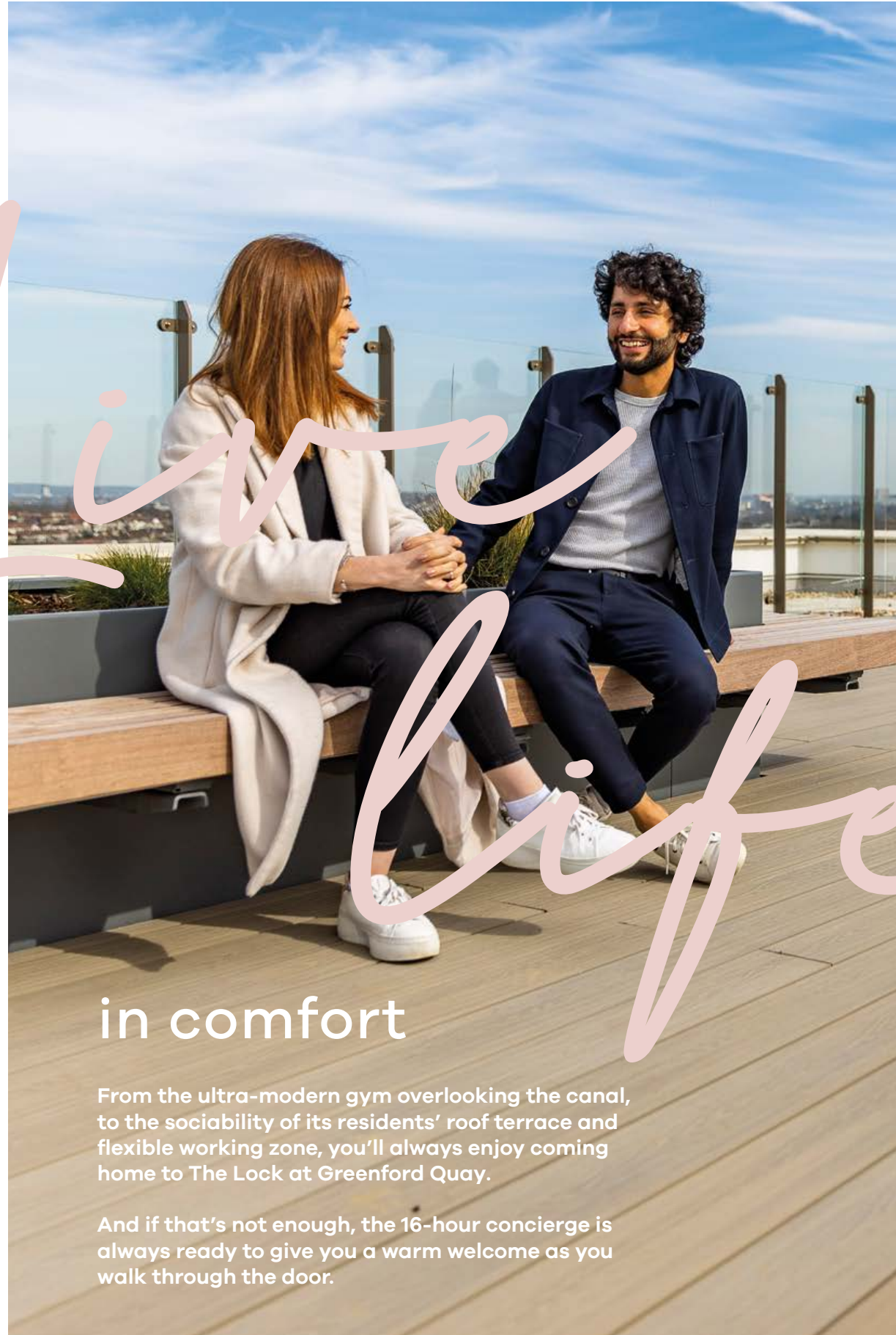
GRAND UNION CANAL

< SUDBURY HILL TUBE STATION  
0.9 MILES

GREENFORD STATION >  
0.3 MILES







Live life

## in comfort

From the ultra-modern gym overlooking the canal, to the sociability of its residents' roof terrace and flexible working zone, you'll always enjoy coming home to The Lock at Greenford Quay.

And if that's not enough, the 16-hour concierge is always ready to give you a warm welcome as you walk through the door.



### LANDSCAPED GARDENS

Stroll among beautifully landscaped gardens, enjoy a good book on the banks of the canal, catch a performance at the amphitheatre or admire the tranquillity of the unique water feature.

### CONCIERGE

A 16-hour concierge service is on hand to help make your life easier, whether it's booking transport, receiving packages, organising maintenance or simply providing additional security.



### RESIDENTS' GYM

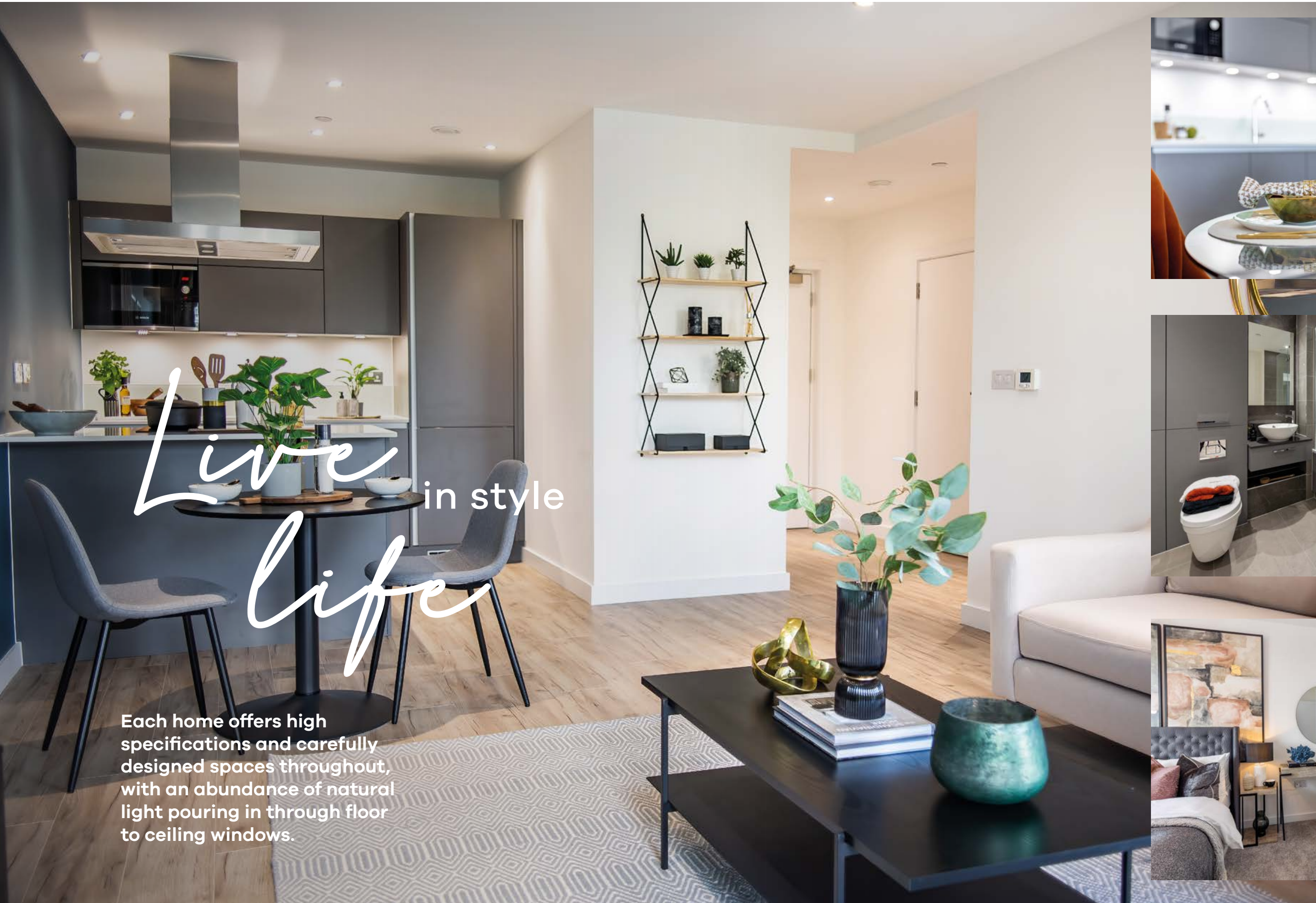
Make the most of state-of-the-art gym equipment just a short walk from your front door, with a resident's gym to complement Greenford Quay's mission to promote a healthier, happier lifestyle.

### FLEXIBLE WORKING ZONE

This communal area provides a comfortable professional environment with wi-fi connection that is perfect for residents who enjoy working from home, but miss the buzz of the office.







*Live* in style  
*Life*

Each home offers high specifications and carefully designed spaces throughout, with an abundance of natural light pouring in through floor to ceiling windows.





# Live life

with city connections

Greenford Quay is perfectly connected for commuting and exploring London and beyond.



## Road

One of the 17 different bus routes serving the area stops 200 yards from Greenford Quay, while the A40 is only a mile away and connects with the North Circular and M25.

## Bike

Care for yourself and the environment by taking advantage of the London Cycle Network. You could be coasting along picturesque cycleways with ease.

## Rail

0.3 miles away is Greenford station's Central line connection, opening up central London, the City, Canary Wharf, and easy Crossrail access launching soon.



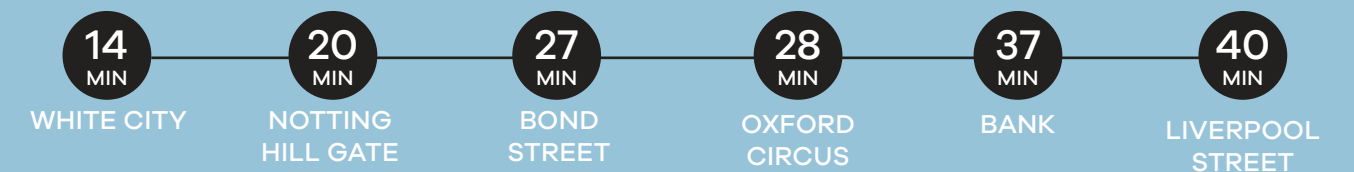
### Sudbury Hill, Piccadilly Line



### Greenford National Rail



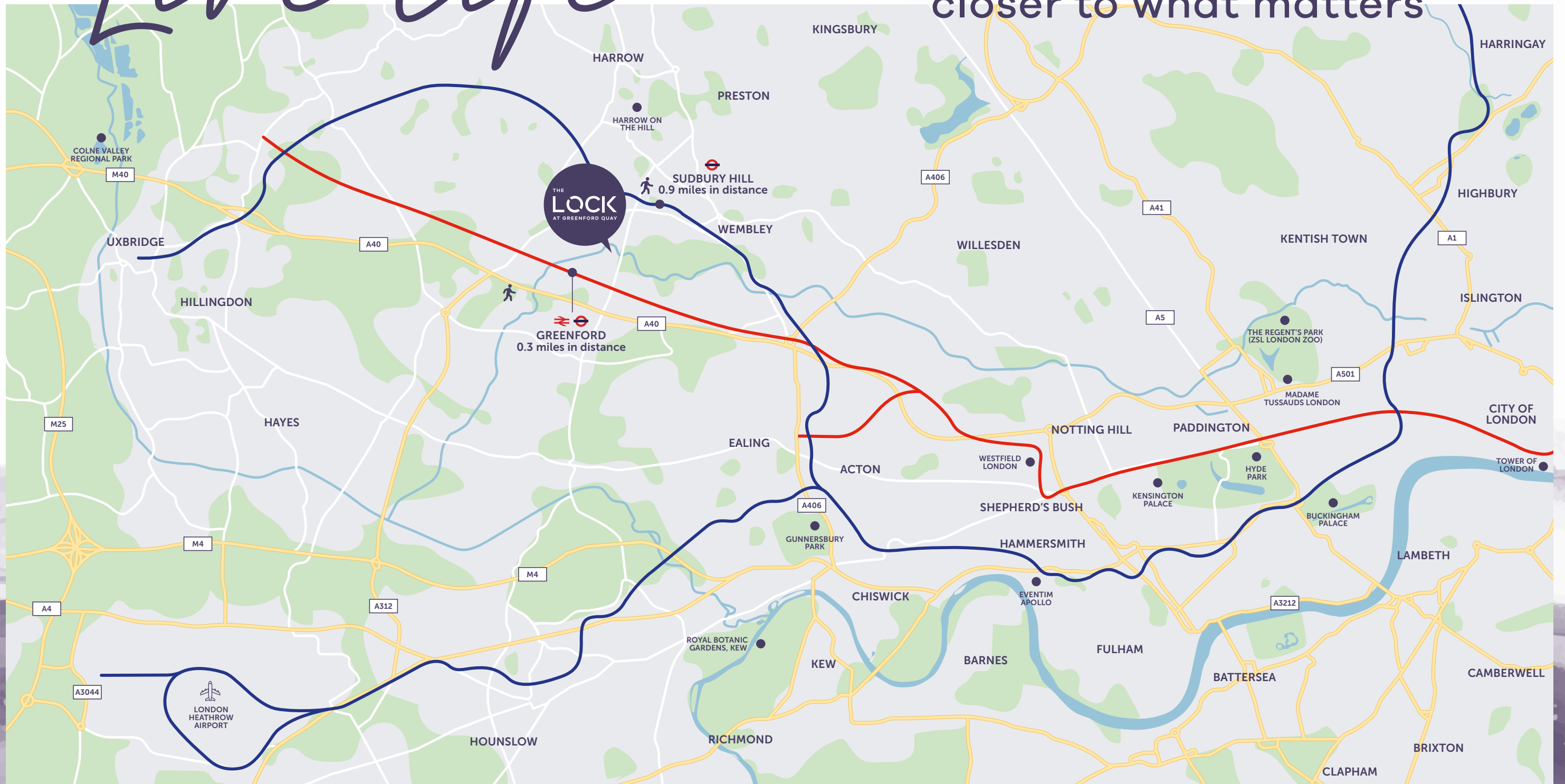
### Greenford Central Line





# Live life

closer to what matters





Greenford Quay offers everything you need to make the most of London, combining peace and quiet with fun and accessibility.

Live life

0.6 MILES 

Westway Cross Shopping Park, Greenford

Located just around the corner from Greenford Quay and featuring high street names such as New Look, Next, M&S, Boots and Costa Coffee.



12 MIN

Westfield, Shepherd's Bush

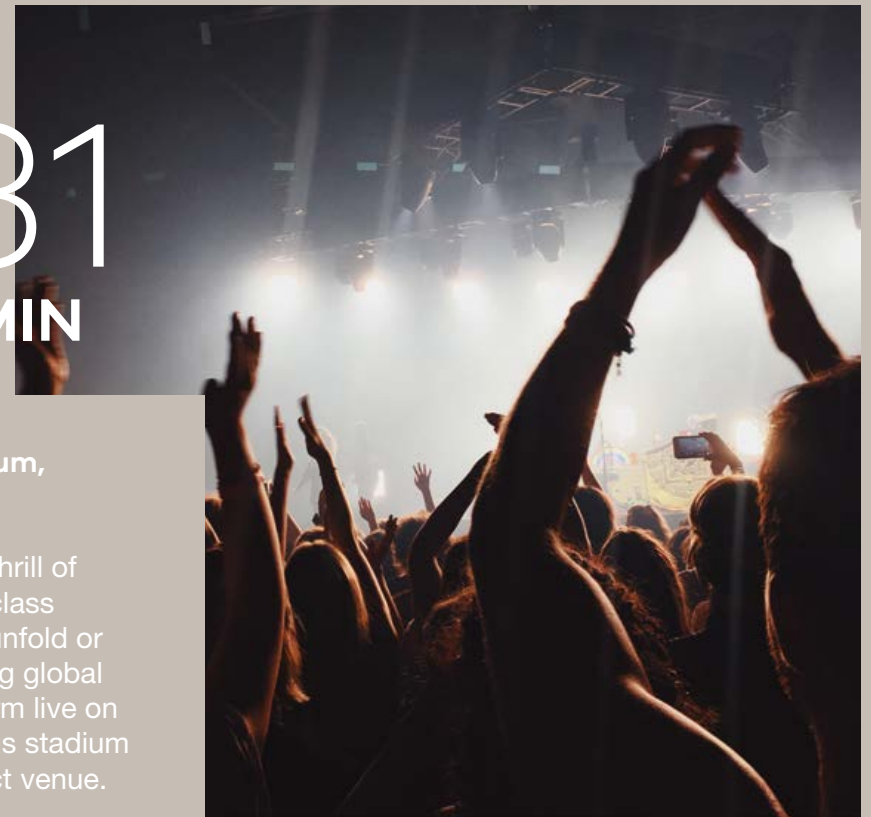
The wealth of retail choice at Westfield is legendary but you also have a Vue Cinema, All Star Lanes bowling, mini golf at the Puttshack and endless family fun at KidZania.



31 MIN

Wembley Stadium, Wembley

Whether it's the thrill of watching world-class sporting events unfold or the buzz of seeing global superstars perform live on stage, this famous stadium makes the perfect venue.



with the perfect balance



THE MOORING

THE LOCK

AT GREENFORD QUAY

# Live life

## in a new community

When you open your front door and step out into Greenford Quay, you'll dive into a community designed to nurture a spirit of healthy openness and freedom.

Enjoy coffee with friends in Central Square, eat al fresco on the banks of the canal, play a round of golf or take to the water at the canoe club.

There's always something new to discover and someone new to meet in this constantly vibrant, colourful environment.



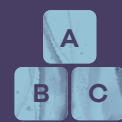
Cafés



Restaurants and microbrewery



Floating cinema



Monkey Puzzle Nursery



Leisure facilities





# Live Life

with it all on  
your doorstep

The key to creating such a vibrant waterside community is to ensure there are enough local amenities to cater for everyday needs, plus a few extras.

As such, Greenford Quay plays home to a variety of essential shops and services, along with local businesses and commercial spaces that act as a hub for this exciting area. With all this on your doorstep, there is little reason to leave.



## STARBUCKS

This deliciously dependable international coffee shop chain has decades of experience giving people the perfect morning pick-me-up, so having one located right on your doorstep means you'll always be ready for the day ahead.



## TWIN PROVINCE

This proposed canalside Gin Distillery, Bar & Restaurant Group will put tasty food and a constant supply of delicious gin in a beautiful waterside location just a stone's throw away. What's not to like about that?



## GP SURGERY

The Lock is a place that makes it easy to enjoy a healthy, happy lifestyle, that's why in addition to the many ways you can enjoy life, there is also a proposed health centre due to open just around the corner.



## DENTIST

Life at The Lock is guaranteed to bring a smile to your face, so it's important to make sure your pearly whites are always looking their best. Having a dentist on your doorstep makes it easy to do just that.



## MONKEY PUZZLE DAY NURSERY

There's nothing more precious than family, especially in their early years, so it's reassuring to know that this popular nursery is just around the corner, offering 30+ years of experience and consistent high ratings.



## SUPERMARKET

Forget long journeys heavily laden with shopping bags full of groceries. At The Lock at Greenford Quay, the nearest supermarket is just a few steps away and stocks all the everyday essentials you could need and more.



THE LOCK

# Live life

with good times

AT GREENFORD QUAY

Grab your morning latte on the way to work, catch up with friends over a coffee and a slice of cake or find comfort in one of the traditional gastro pubs by the canal.



For those relaxing Sunday afternoons, why not visit Sudbury Golf Club, complete with rolling, tree-lined fairways and slick, smooth pulpit greens.

Alternatively, after a short journey you'll find food with exquisite panache in Ealing's vibrant Dickens Yard, along with plenty of nearby bars offering everything from honest pints to fine wines.





# Live life

by green spaces



Paradise Fields  
Horsenden Hill

0.6 miles



Northala  
Fields

1.7 miles



Brent Valley  
Park

1.7 miles

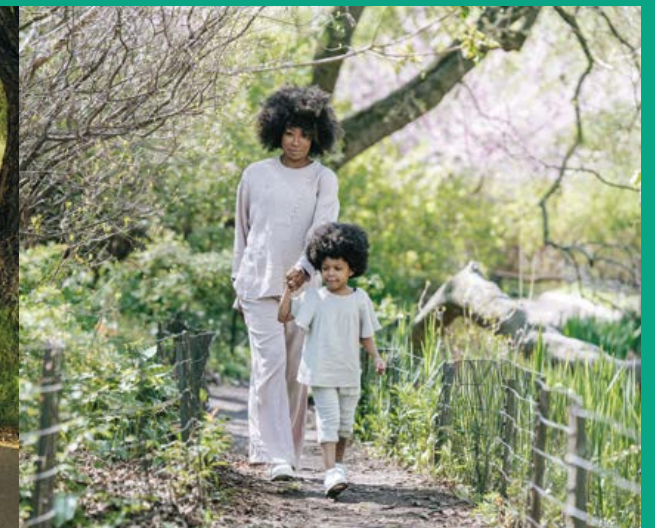
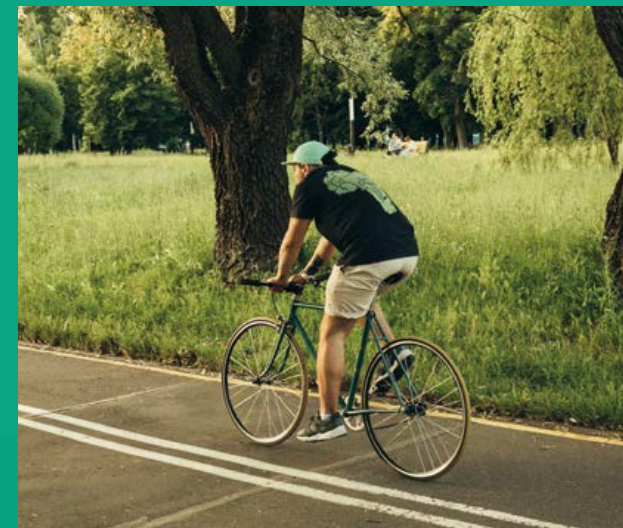


Islip Manor  
Meadows

2.5 miles

Real quality of life means being able to spend plenty of time relaxing outdoors.

Greenford Quay is a green oasis dedicated to enabling a healthy, relaxed lifestyle.



Unwind in pocket parks, socialise in the terraced amphitheatre or stroll in the dappled light of the Green Finger, the forest gateway to nearby Horsenden Hill where you'll find an abundance of nature to connect with.

From Greenford Quay you can even walk or cycle all the way to Paddington Basin and Regent's Park, while the Royal Botanic Gardens at Kew is only 7.2 miles away by car.



THE LOCK

AT GREENFORD QUAY





# A living legacy

At Telford Homes we are passionate about building sustainable communities and creating rewarding opportunities.

Communities that are bespoke to their vibrant locality and enable you to lead a healthy, sustainable lifestyle in one of the world's greatest cities. *Building a Living Legacy* is our strategy to achieve this, the four pillars are:

## Living legacy

We make sure that the homes and places we create are designed for modern living. We create memorable places that you will be proud to call home, and that are exciting, relaxing and secure. We enable strong communities by helping you to get to know your neighbours and the things you'll enjoy locally, and wherever possible, to help provide facilities that promote healthy lifestyles that keep you fit and give you access to green open spaces.

## Balanced resources

In using resources efficiently our aim is to contribute to a healthy environment. We are helping to improve local air quality by using low-carbon technologies and generating renewable energy, as well as recycling the waste we create when we build your home, we also encourage you to use the recycling bins provided when you move in. We use water smartly when building your home and install water efficient devices in our kitchens and bathrooms which will also save you money.

## Creative building solutions

Your home has been built to the highest quality and is designed to minimise your energy bill. We use a range of highly efficient technologies to keep you warm in winter and comfortable in the summer. Many of our developments have efficient on-site energy plants that help to reduce your costs and provide cleaner energy.

## Smart business

To ensure that we deliver on our promises to you, we empower our employees by providing a working environment that enables them to achieve their undoubted potential. We live by our values, and *Building a Living Legacy* is embedded into our culture which encourages good governance. By working in partnership, we maintain strong relationships with our customers and partners to enable us to create the best homes and places.



We're incredibly proud to be ranked as the UK's most sustainable housebuilder in the Next Generation benchmarking report.

This recognition is a real testament to our *Building a Living Legacy* strategy in creating a better quality of life for our customers, enhancing local communities, managing risk and delivering value.







**The Telford Homes brand delivers high-quality, highly desirable new homes that are supported by first-class customer service.**

A high specification, combined with some of the finest designer names, ensures that each individual property meets or exceeds the most demanding expectations.

Architectural innovation and excellence ensure a true landmark development, while a fresh and imaginative approach to communal areas further ensures a truly luxurious lifestyle experience.

**[www.telfordhomes.london](http://www.telfordhomes.london)**

TELFORD HOMES, TELFORD HOUSE, QUEENSGATE, BRITANNIA ROAD, WALTHAM CROSS, HERTS, EN8 7TF.

Telford Homes terms and conditions apply. Computer generated imagery and other imagery is indicative only. These particulars are for illustration only. We operate a policy of continuous improvement and individual features such as kitchen and bathroom layouts, doors, windows and elevational treatments may vary from time to time. Specification details are for guide purposes only and remain subject to change without prior notice. Should a replacement be required this will be to an equal or higher standard. Consequently these particulars should be treated as general guidance only and cannot be relied upon as accurately describing any of the Specified Matters prescribed by any order made under the Consumer Protection from Unfair Trading Regulations 2008. Nor do they constitute a contract, part of a contract or a warranty. The Lock at Greenford Quay is a marketing name and may not form part of the final postal address. Computer generated images are indicative only and may be subject to change. Details correct at time of going to print E&OE. Travel times and distances taken from google.co.uk/maps, tfl.gov.uk and nationalrail.co.uk and are approximate only. May 2022.



THE  
**LOCK**  
AT GREENFORD QUAY

SALES SUITE OPENING TIMES

---

Monday to Saturday 10am–6 pm  
Sunday 11am–5pm



**telfordhomes**  
A TRAMMELL CROW COMPANY DEVELOPER