



# SAVANNAH INTERCHANGE PARK @ 95

**BUILDING 900**

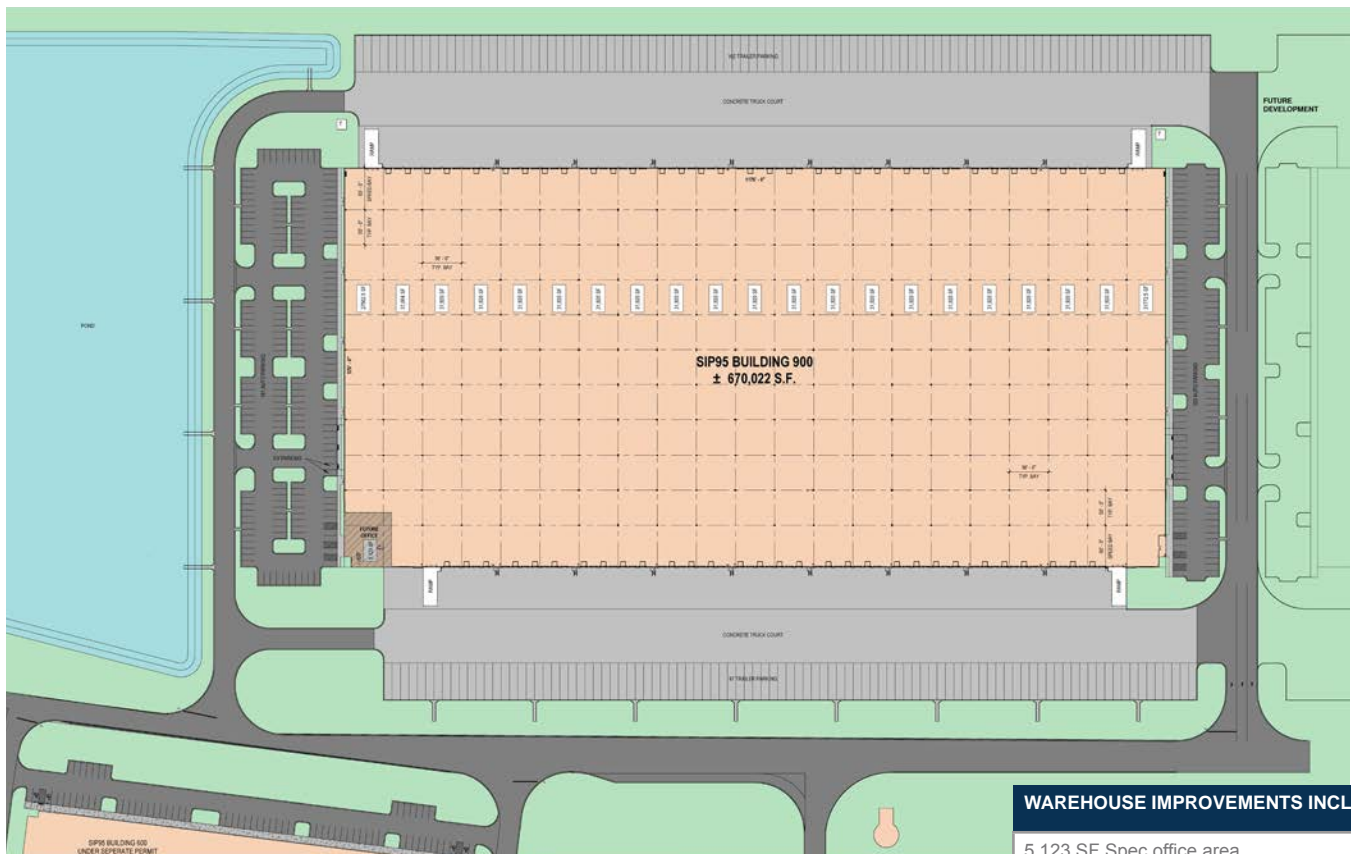
1001 Kaizen Parkway  
Savannah, GA 31419



# SAVANNAH INTERCHANGE PARK @ 95

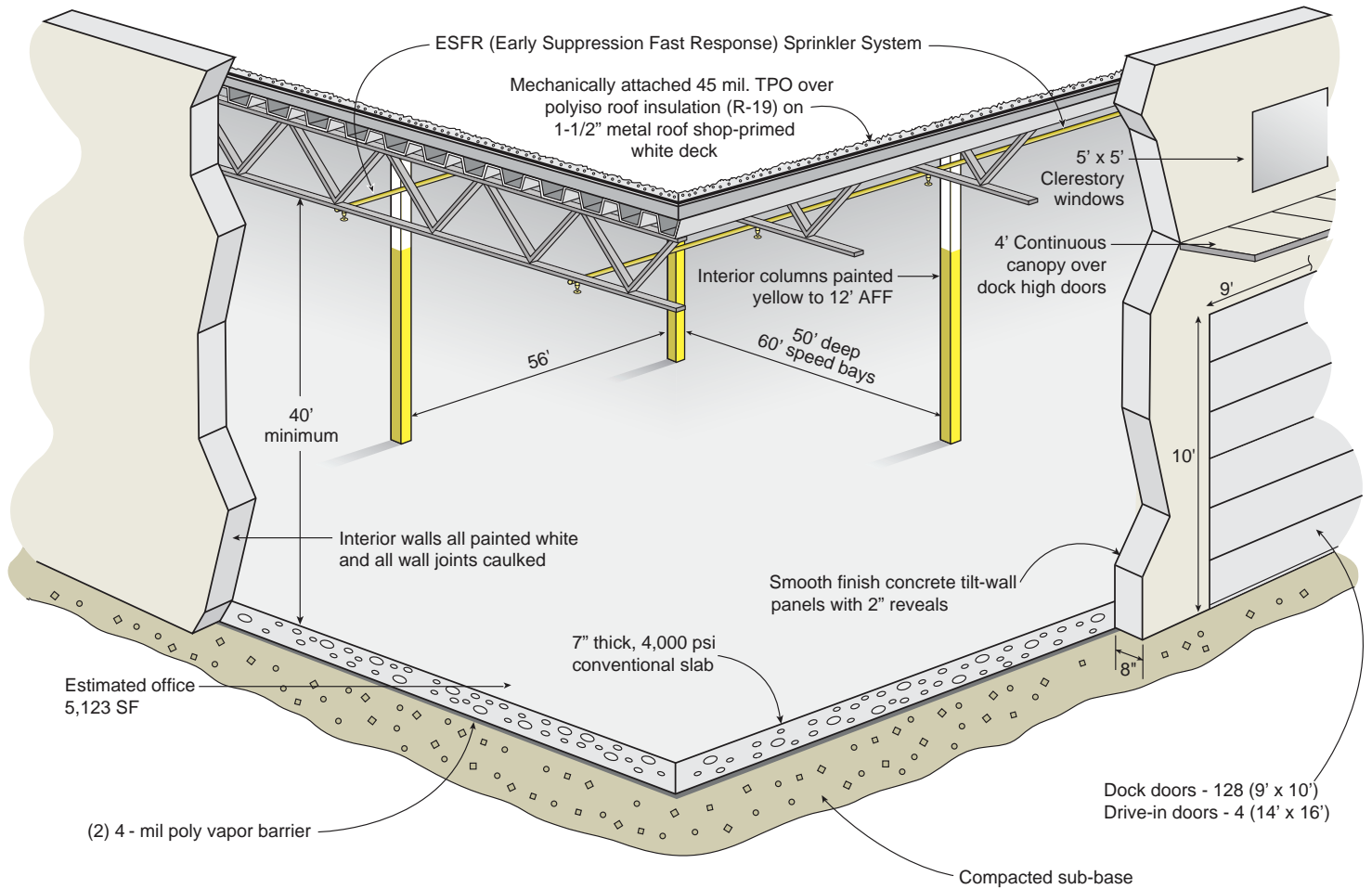
1001 Kaizen Parkway, Savannah, GA

Savannah Interchange Park @ 95 is located less than one mile from I-95 on Kaizen Parkway (GA Hwy 204) in Savannah, GA. The 155.57 acre park can accommodate up to 2.1 MSF in five buildings. Savannah Interchange Park @ 95 is less than 15 miles from the Georgia Ports Authority's Garden City Terminal and 16 miles away from the Hyundai plant. With immediate access to I-95 and I-16 Savannah Interchange Park @ 95 is the ideal location for regional distribution.



#### WAREHOUSE IMPROVEMENTS INCLUDE:

- 5,123 SF Spec office area
- 64 (40,000 lb) Rite Hite mechanical dock levelers
- LED lights in warehouse
- 10 battery charging disconnects



## BUILDING SPECIFICATIONS

## BLDG 900\*

**Square Footage**

670,022 SF (570' x 1176')

**Expandable SF**

1,400,000 SF

**Site Area**

+/- 51.6 acres

**Configuration**

Crossdock

**Column Spacing**

56' W x 50' D with 60' speed bays

**Construction**

Tilt up

**Clear Height**

40' min.

**Dock High Doors**

128 (9' x 10') insulated doors

**Drive-in Doors**

4 (14' x 16') ramped

**Truck Court Depth**

190'

**Auto Parking**

294 spaces

**Trailer Parking**

199 spaces

**Sprinkler System**

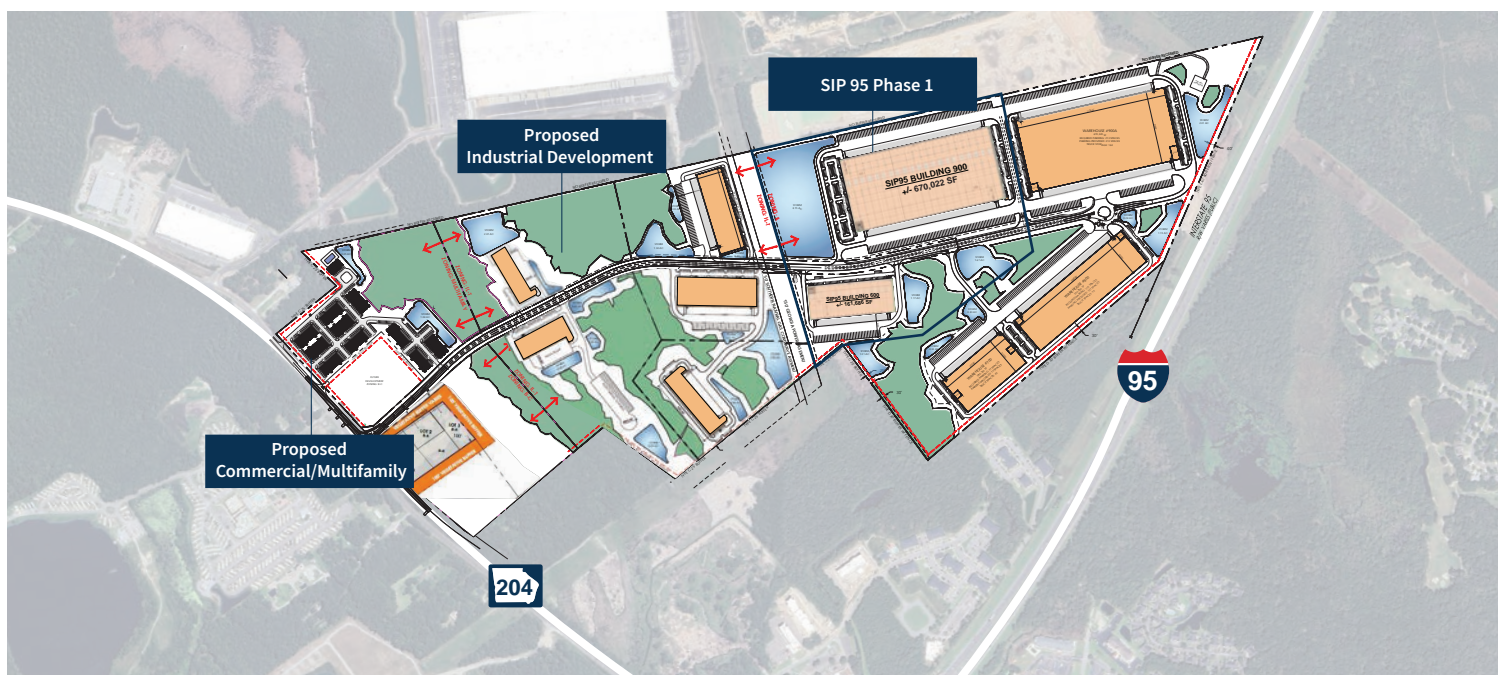
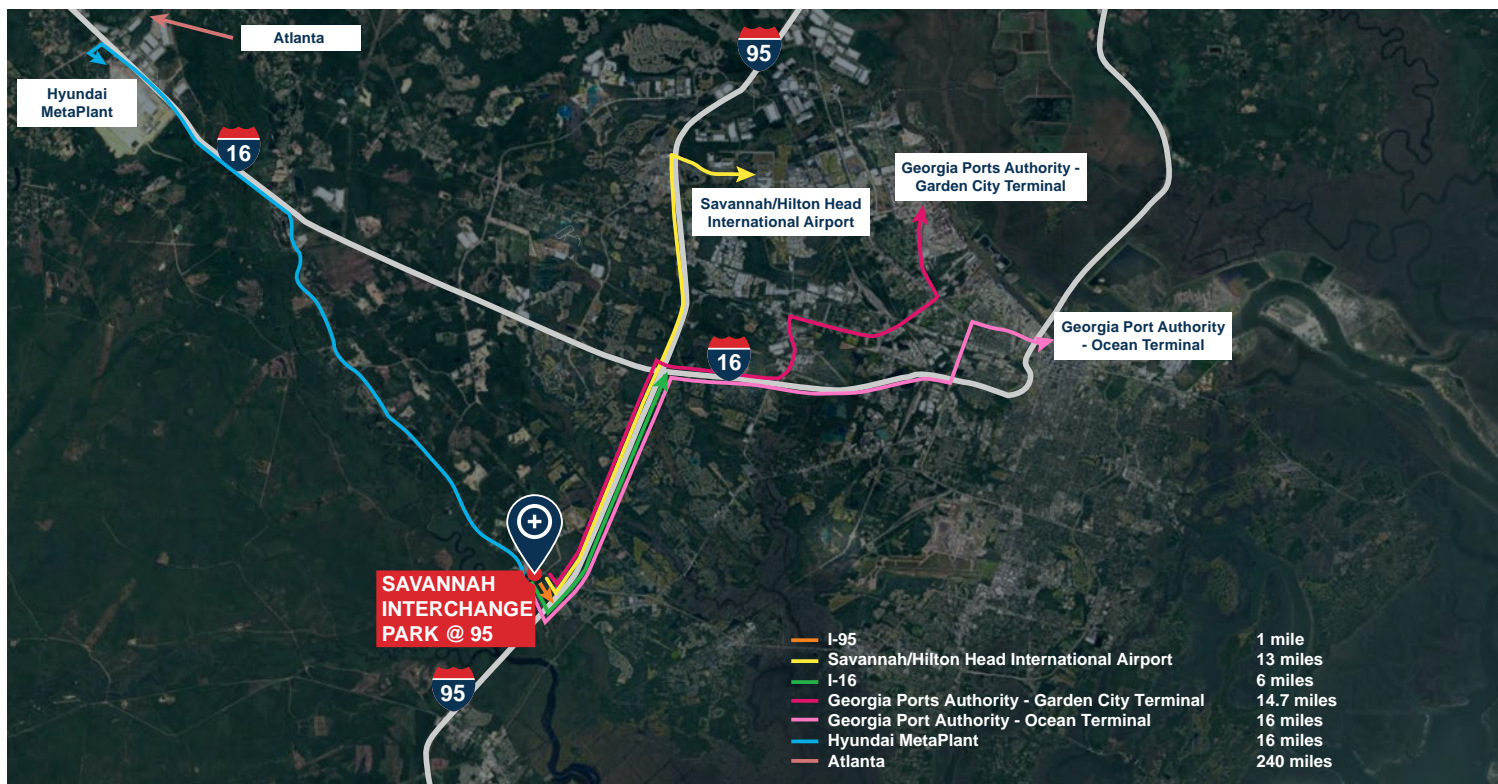
ESFR

**Power**

(2) 500 KVA transformers, one at each end

**PHASE 1\***





**BENNETT RUDDER, SIOR**  
Executive Managing Director  
JLL  
+1 912 250 4595  
bennett.rudder@jll.com

**RYAN HOYT, SIOR**  
Executive Managing Director  
JLL  
+1 404 995 2090  
ryan.hoyt@jll.com

**CHRIS TOMASULO, SIOR**  
Vice Chairman  
JLL  
+1 404 995 2462  
chris.tomasulo@jll.com

**LINDSEY WILMOT**  
Vice President  
JLL  
+1 912 663 9394  
lindsey.wilmot@jll.com

**About JLL**

For over 200 years, JLL (NYSE: JLL), a leading global commercial real estate and investment management company, has helped clients buy, build, occupy, manage and invest in a variety of commercial, industrial, hotel, residential and retail properties. A Fortune 500® company with annual revenue of \$20.8 billion and operations in over 80 countries around the world, our more than 111,000 employees bring the power of a global platform combined with local expertise. Driven by our purpose to shape the future of real estate for a better world, we help our clients, people and communities SEE A BRIGHTER WAY<sup>SM</sup>. JLL is the brand name, and a registered trademark, of Jones Lang LaSalle Incorporated. For further information, visit [jll.com](http://jll.com).

