



# For Sublease


jll.com

500 Bursca Drive  
Bridgeville, PA 15017

**Rick O'Brien, SIOR**  
412.208.1403  
rick.obrien@jll.com

**Greg Hopkins**  
412.770.5295  
greg.hopkins@jll.com

**Alec Staiger**  
412.977.4184  
alec.staiger@jll.com

 **JLL** SEE A BRIGHTER WAY

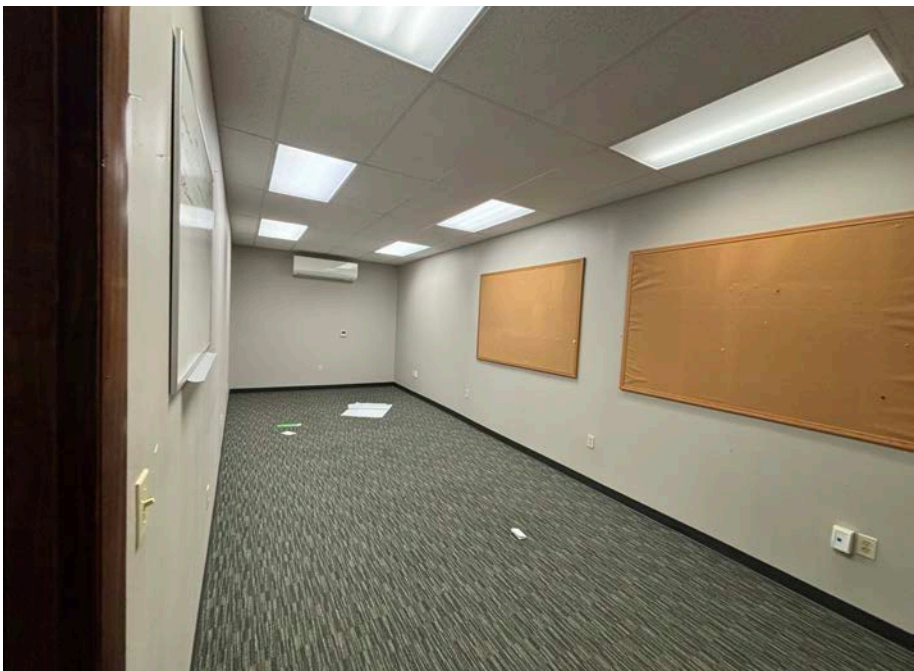


**PROPERTY INFORMATION**

Building Size	± 30,000 SF
Construction	1989
Parking (Cars)	Shared lot for common parking
Zoning	B-1 Business

**SPECIFICATIONS**

Available SF	± 3,000 SF
Column Spacing	Clear span warehouse space
Clear Height	16' - 17'6"
Drive-in Doors	(1) 10'H x 12'W
Warehouse HVAC	(1) Modine heating unit
Lighting Specification	LED
Availability	Term ends 10/31/2027









## KEY DISTANCES

11.7 miles (16 min) to I-376

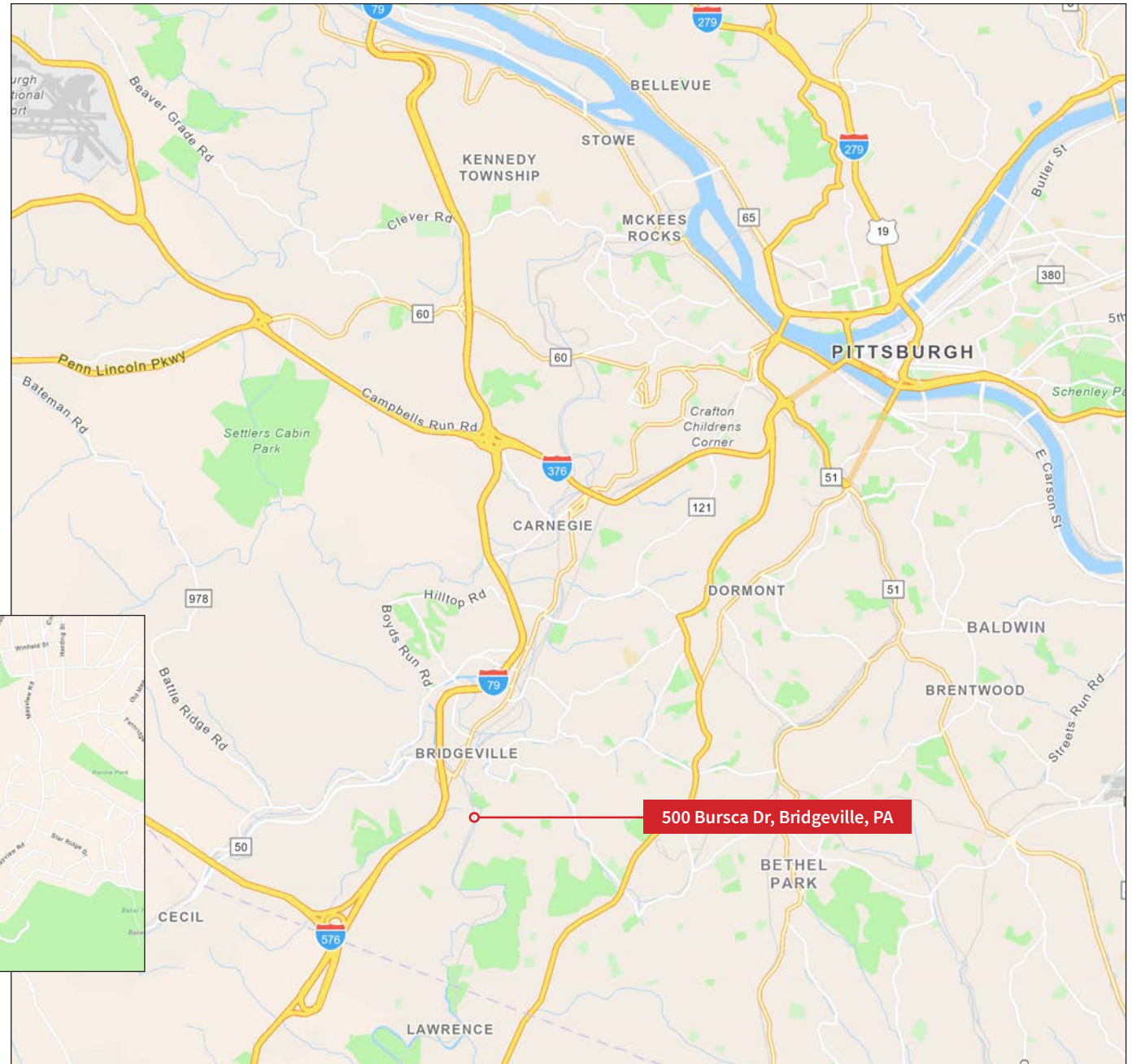
1.8 miles (7 min) to I-79

14.2 miles (30 min) to Pittsburgh, PA

28.7 miles (35 min) to Cranberry, PA

19.6 miles (25 min) to PIT Airport

19.4 miles (23 min) to I-70








DISCLAIMER: Although information has been obtained from sources deemed reliable, Owner, Jones Lang LaSalle, and/or their representatives, brokers or agents make no guarantees as to the accuracy of the information contained herein, and offer the Property without express or implied warranties of any kind. The Property may be withdrawn without notice. If the recipient of this information has signed a confidentiality agreement regarding this matter, this information is subject to the terms of that agreement. ©2025. Jones Lang LaSalle. All rights reserved.

[jll.com](https://www.jll.com)

**Rick O'Brien, SIOR**  
412.208.1403  
[rick.obrien@jll.com](mailto:rick.obrien@jll.com)

**Greg Hopkins**  
412.770.5295  
[greg.hopkins@jll.com](mailto:greg.hopkins@jll.com)

**Alec Staiger**  
412.977.4184  
[alec.staiger@jll.com](mailto:alec.staiger@jll.com)

 **JLL** SEE A BRIGHTER WAY