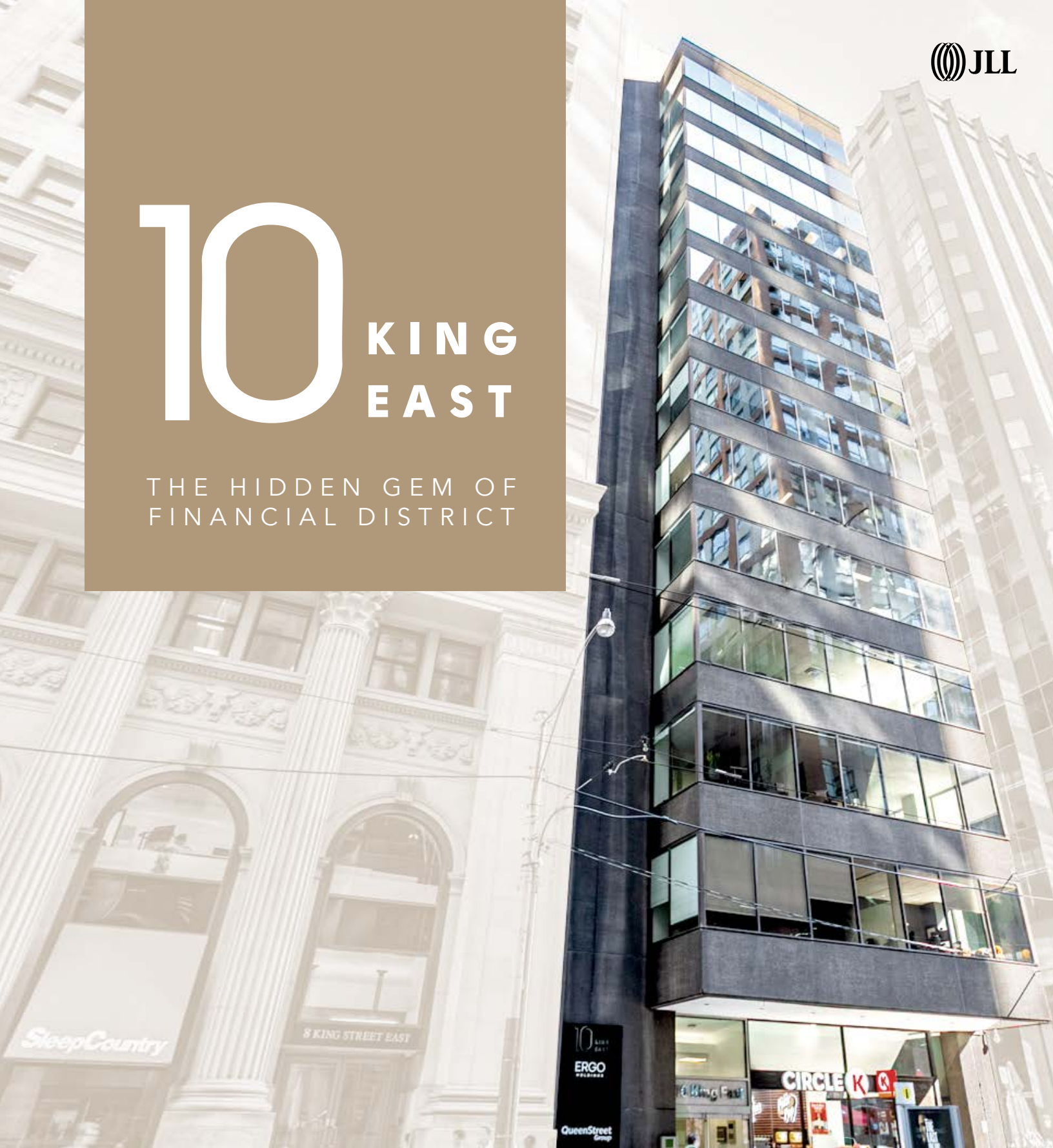


10 KING EAST

THE HIDDEN GEM OF
FINANCIAL DISTRICT



**KATE
RIZZARDO***

Associate

kate.rizzardo@jll.com

+1 (647) 464-5033

Yorkstone

10 KING EAST

THE HIDDEN GEM OF FINANCIAL DISTRICT

Situated at the prime intersection of Yonge and King Street, **10 King Street East** offers a prestigious office address in the vibrant core of downtown Toronto. This recently renovated, 15-story building boasts a total of 59,268 Sq.Ft. of modern, flexible workspace to accommodate businesses of all sizes. With a range of available suites from 1,500 to 4,400 Sq.Ft., 10 King Street East provides the perfect canvas for companies seeking to elevate their presence in the city's thriving commercial landscape.



Property Overview



Total square footage:
59,268 sq. ft.



Available suite sizes:
1,500 - 4,400 sq. ft.



Recent renovations
completed in 2024



Cutting-edge technological
amenities, including high-
speed internet and smart
building features



Efficient, column-free
floor plates with abundant
natural light



10 KING EAST

THE HIDDEN GEM OF FINANCIAL DISTRICT

Availabilities

SUITE	SIZE	AVAILABILITY
200	4,371 SF	30 Days
400	4,348 SF	Immediate
801	2,926 SF	Immediate
1100	4,354 SF	30 Days
1200	791 SF	LEASED
1250	1,464 SF	Immediate
1401	1,660 SF	Immediate

Additional Rent Est (2026): \$28.92 psf

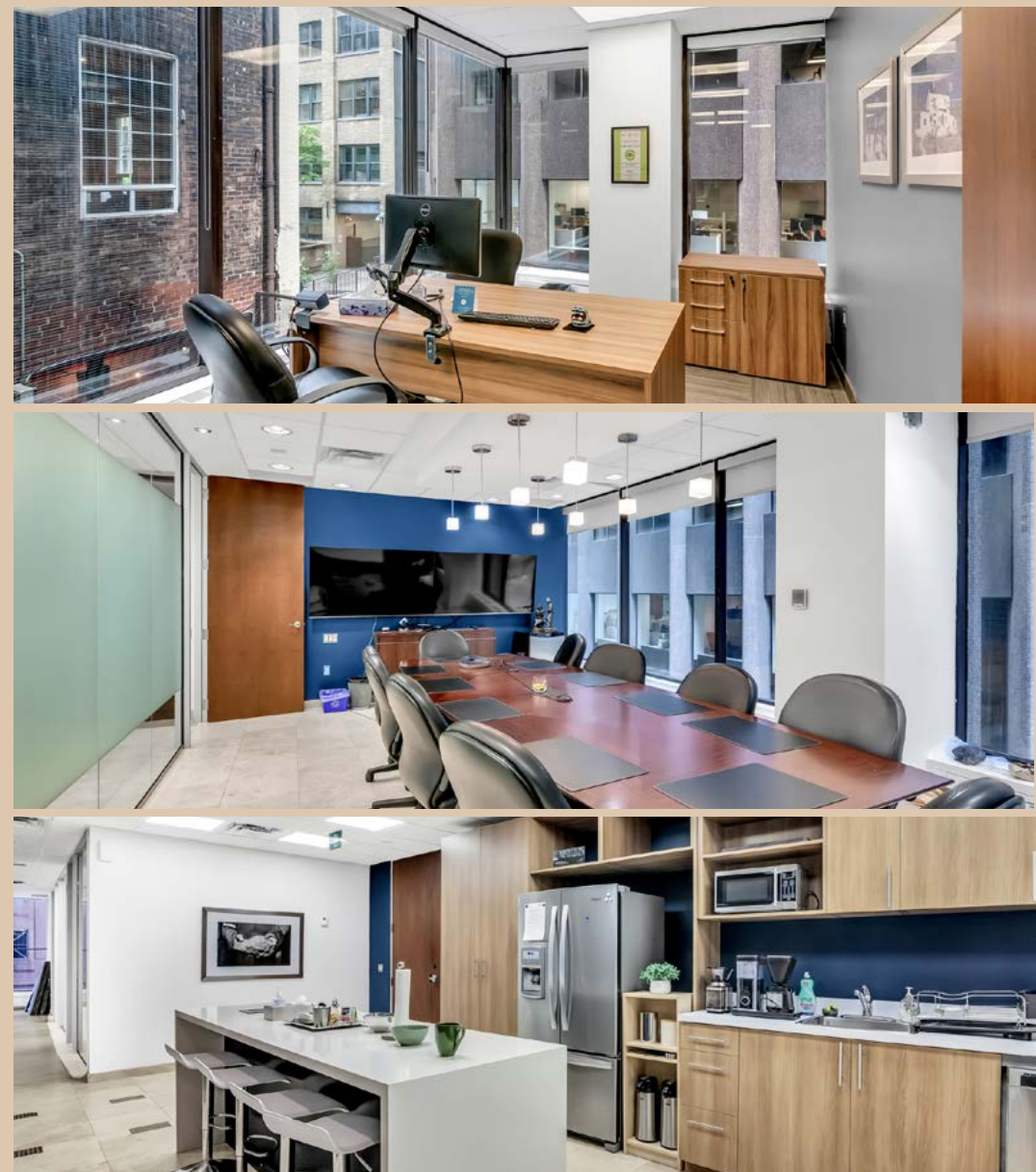
Asking Net Rent: Please contact Kate

**Utilities included*

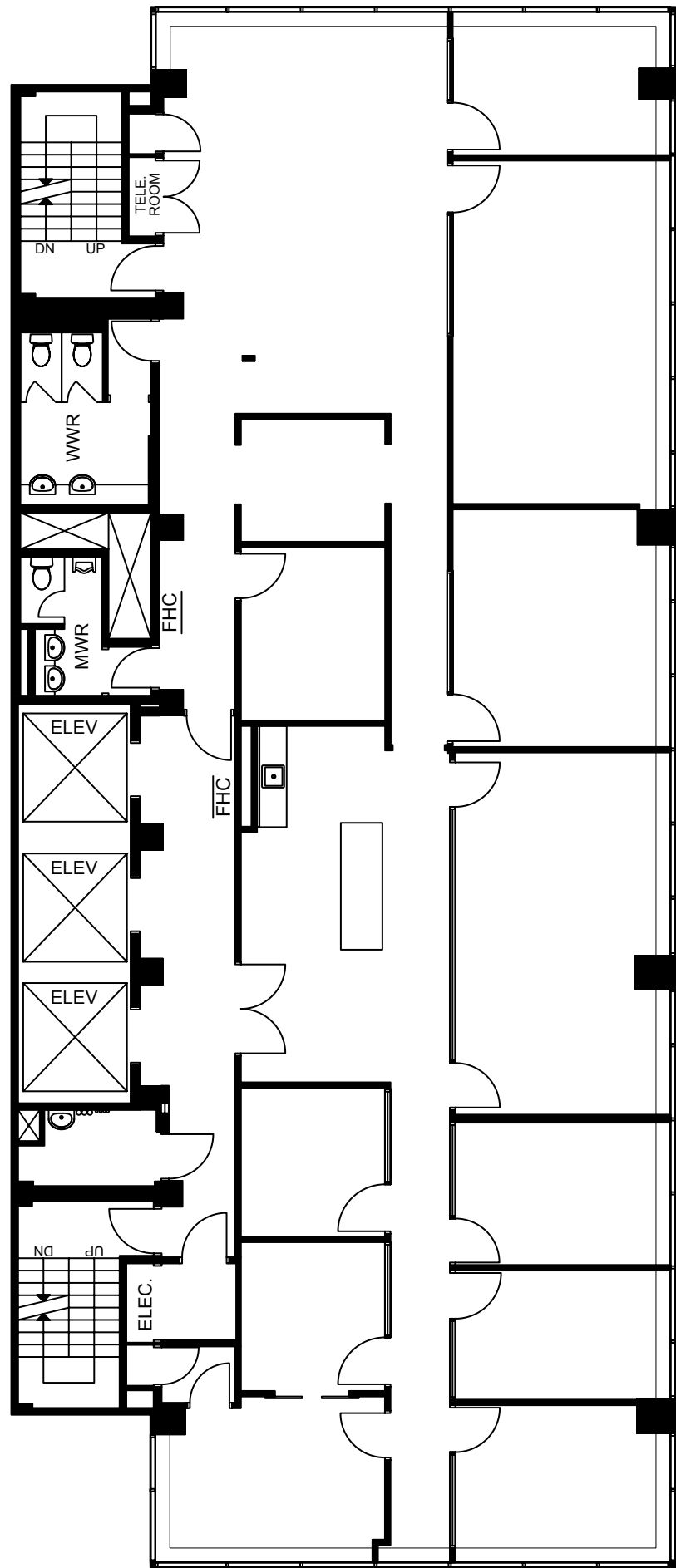
2nd Floor | Suite 200

Size: 4,371 SF

- Full-floor office
- Large conference room
- Nine private offices
- Spacious open-concept work area
- Copy room/storage
- Kitchen
- Large windows throughout the unit, filled with natural light



Potential Design





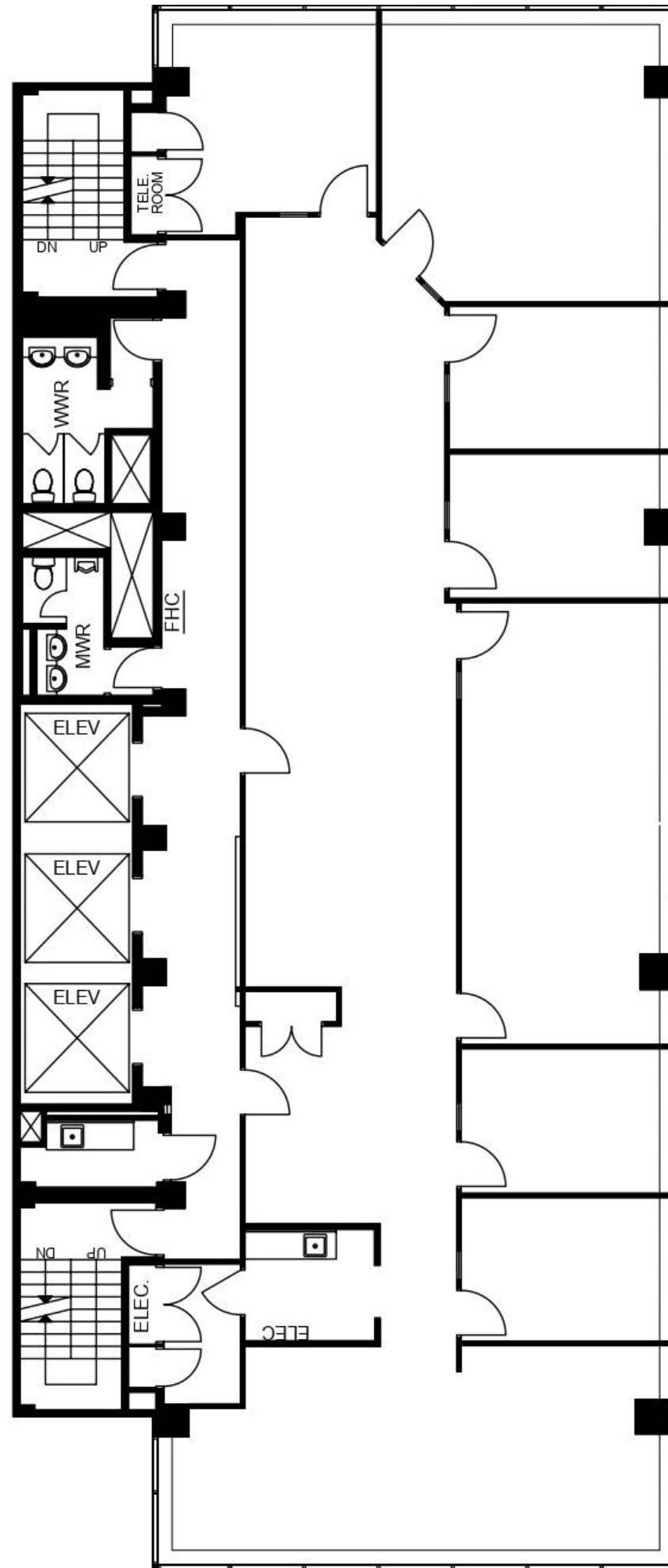
4th Floor | Suite 400

Size: **4,348 SF**

- Full-floor office space
- Potential of dividing into two smaller offices with separate entrances
- Spacious reception area
- 1 Large conference room
- 1 Meeting room/breakout room
- 5 Private Offices
- Two spacious open-concept work areas
- Separate fully-equipped kitchen
- Large windows throughout the unit, filled with natural light
- Furniture available



Potential Design



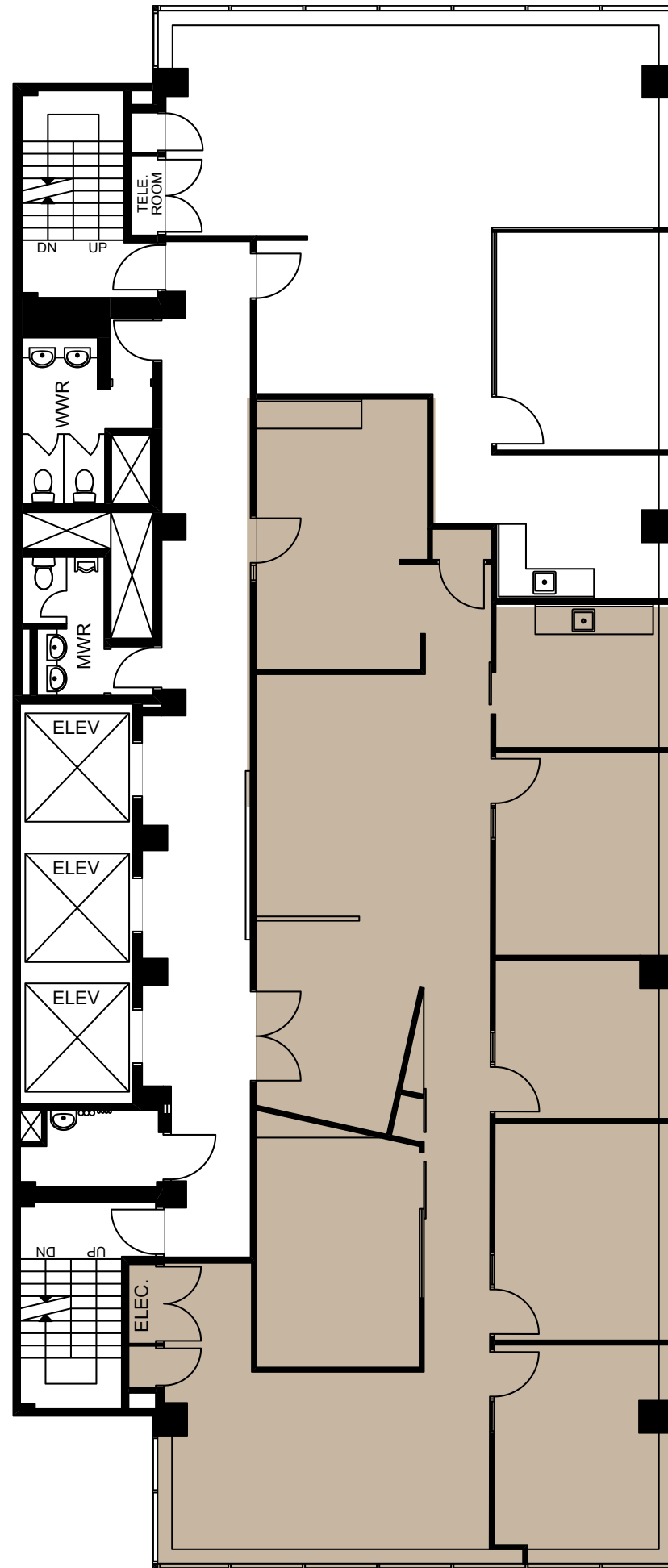
Suite 400



8th Floor | Suite 801

Size: **2,926 SF**

- Reception area
- 1 meeting room
- 4 private offices
- Multiple open-concept work areas
- Copy room/storage
- Separate kitchen
- Large windows throughout the unit
- Furniture available



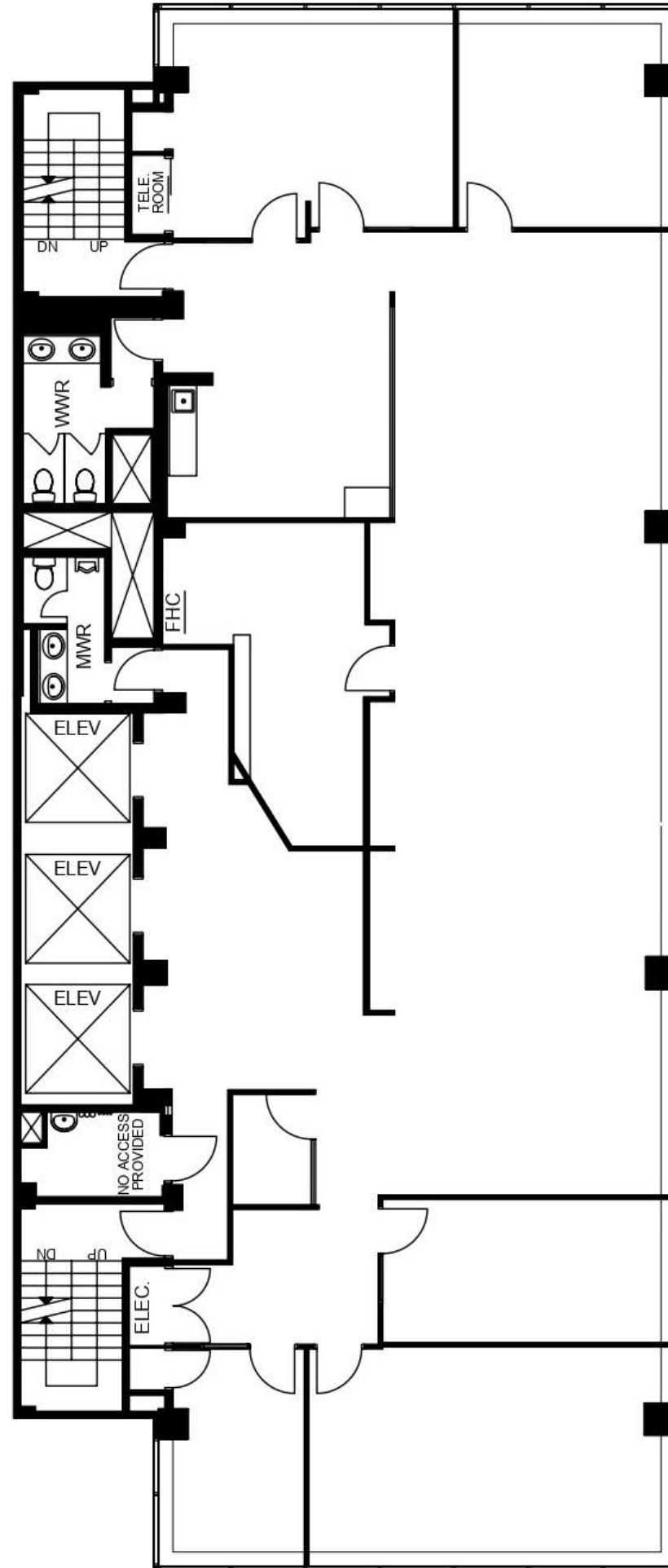
Suite 801



11th Floor | Suite 1100

Size: **4,354 SF**

- Full-floor
- Dedicated reception area
- 1 large conference room
- 4 private offices
- 1 phone room
- 1 Storage room
- Spacious open-concept work area
- Fully-equipped kitchen
- Lounge area
- Large windows throughout the unit, filled with natural light
- Furniture available

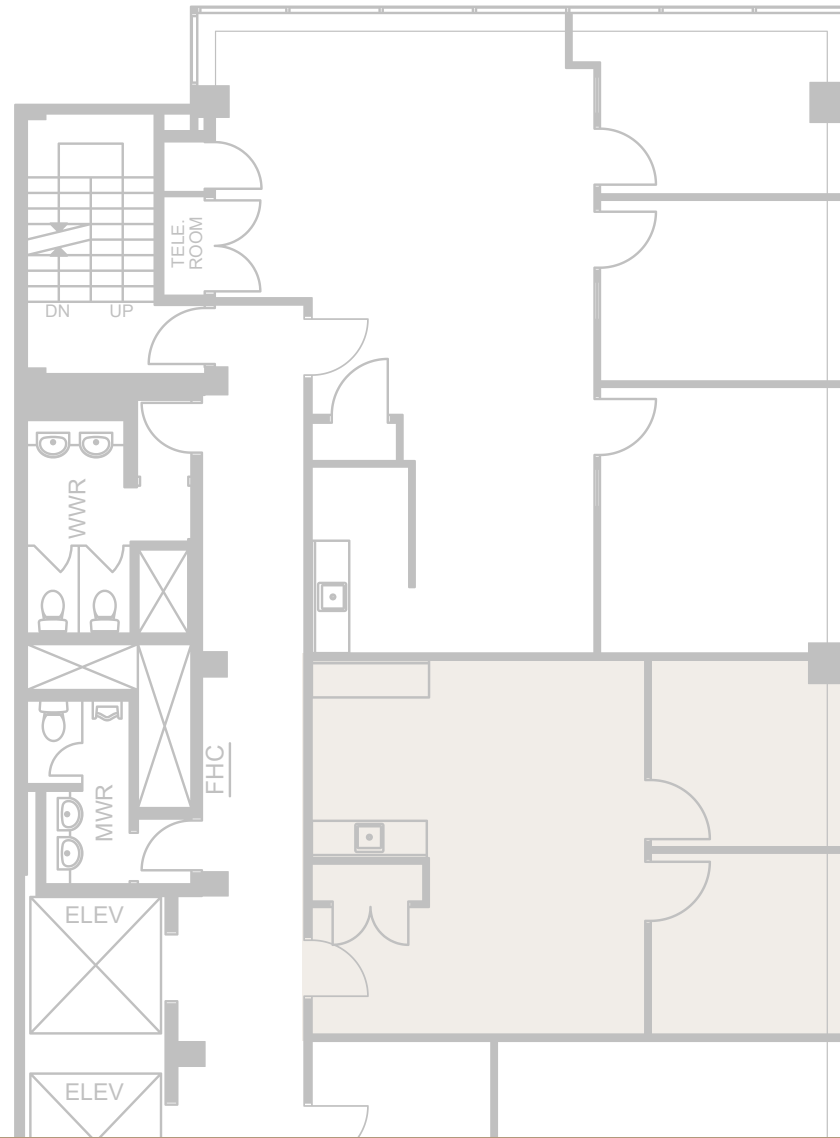


Suite 1100



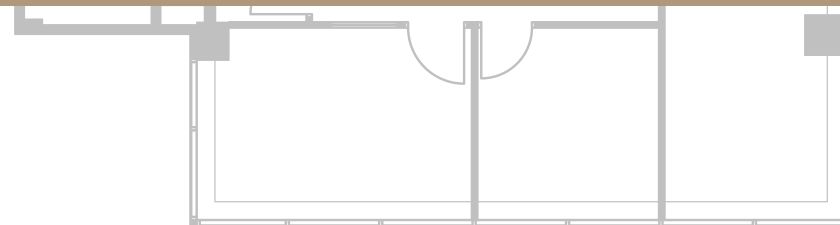
12th Floor | Suite 1200
Size: **791 SF**

- Newly renovated professional office
- 2 private offices
- Open area
- In-suite kitchenette
- Furniture available



Suite 1200

LEASED



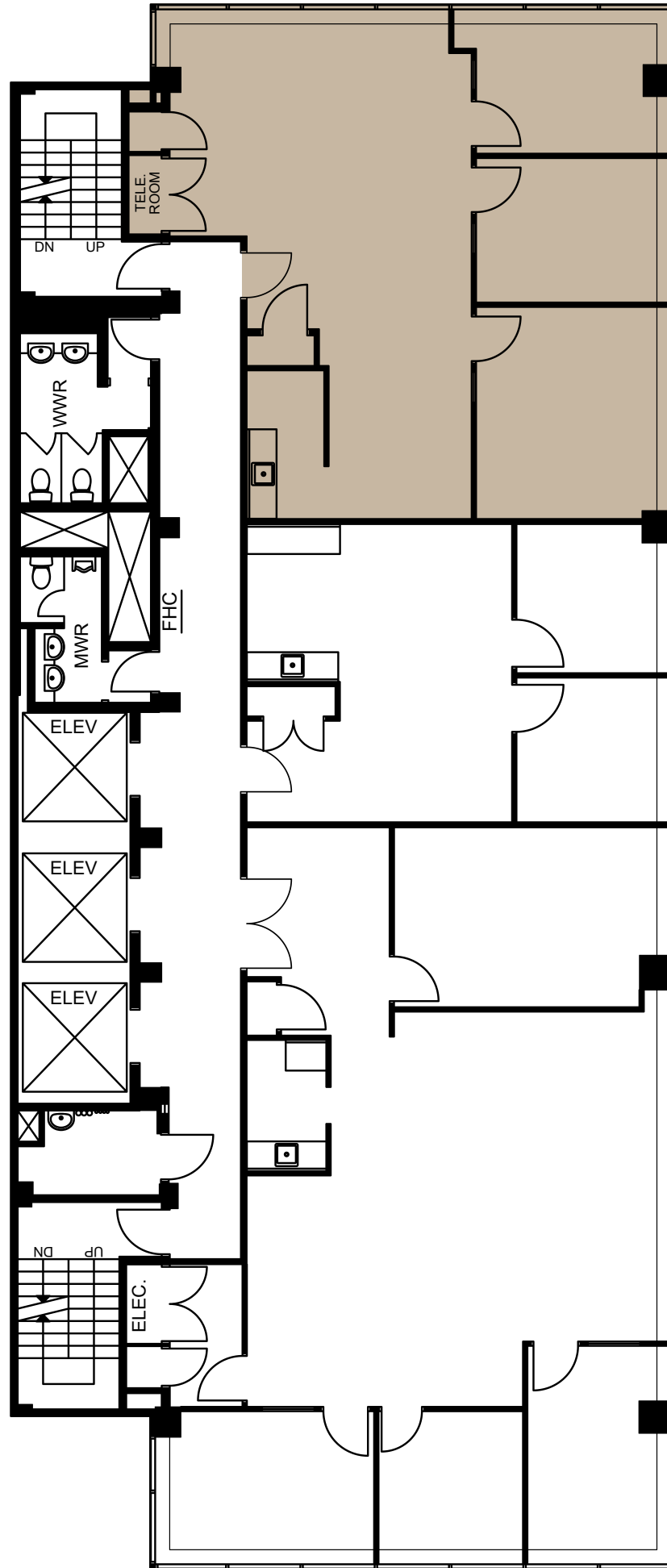
JLL



12th Floor | Suite 1250

Size: **1,464 SF**

- Corner Unit
- 3 private offices
- Open area
- In-suite kitchenette



Suite 1250

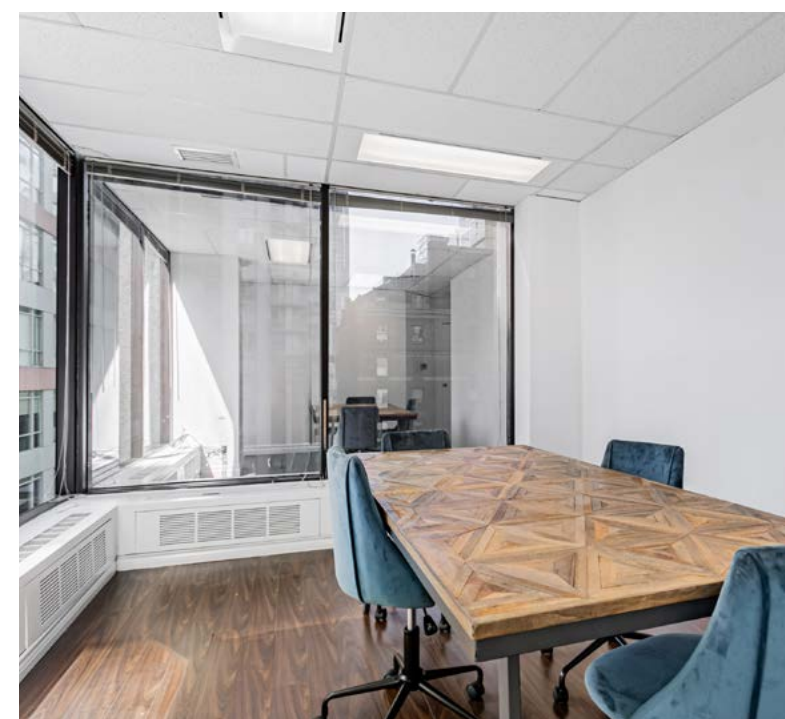
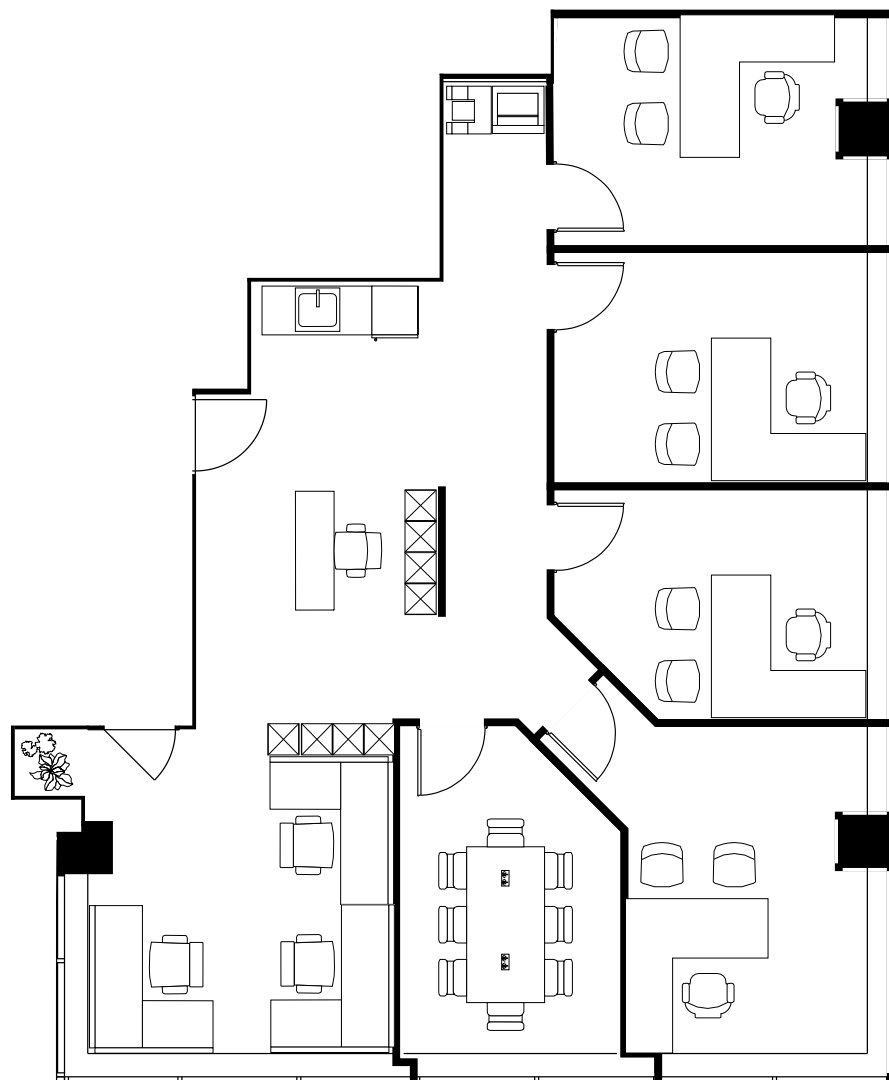
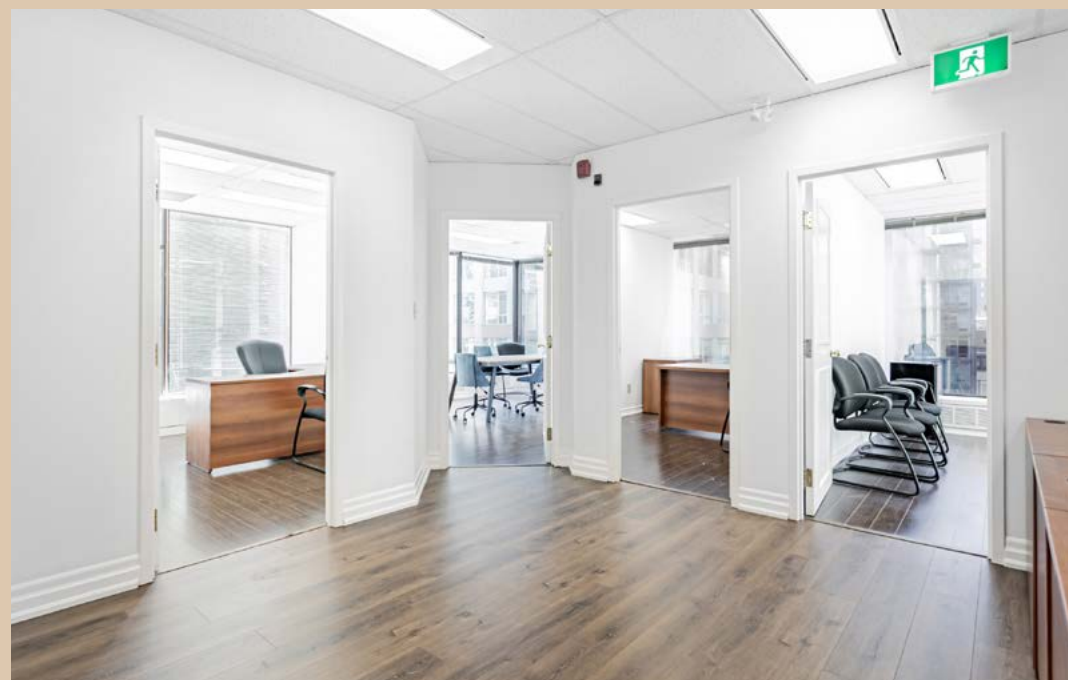
JLL Yorkstone



14th Floor | Suite 1401

Size: **1,660 SF**

- 6 private offices/meeting rooms
- Open-concept work area
- Floor to ceiling windows
- Hardwood floors
- Furniture available



Sustainability & Tenant Amenities



LEED Gold certification, showcasing the building's commitment to environmental sustainability



Onsite property management and 24/7 security



Secure bicycle storage



Inviting lobby and common areas designed to foster collaboration and productivity

Location



Steps from the King
Subway Station, and PATH
network.
3 blocks to Union Station



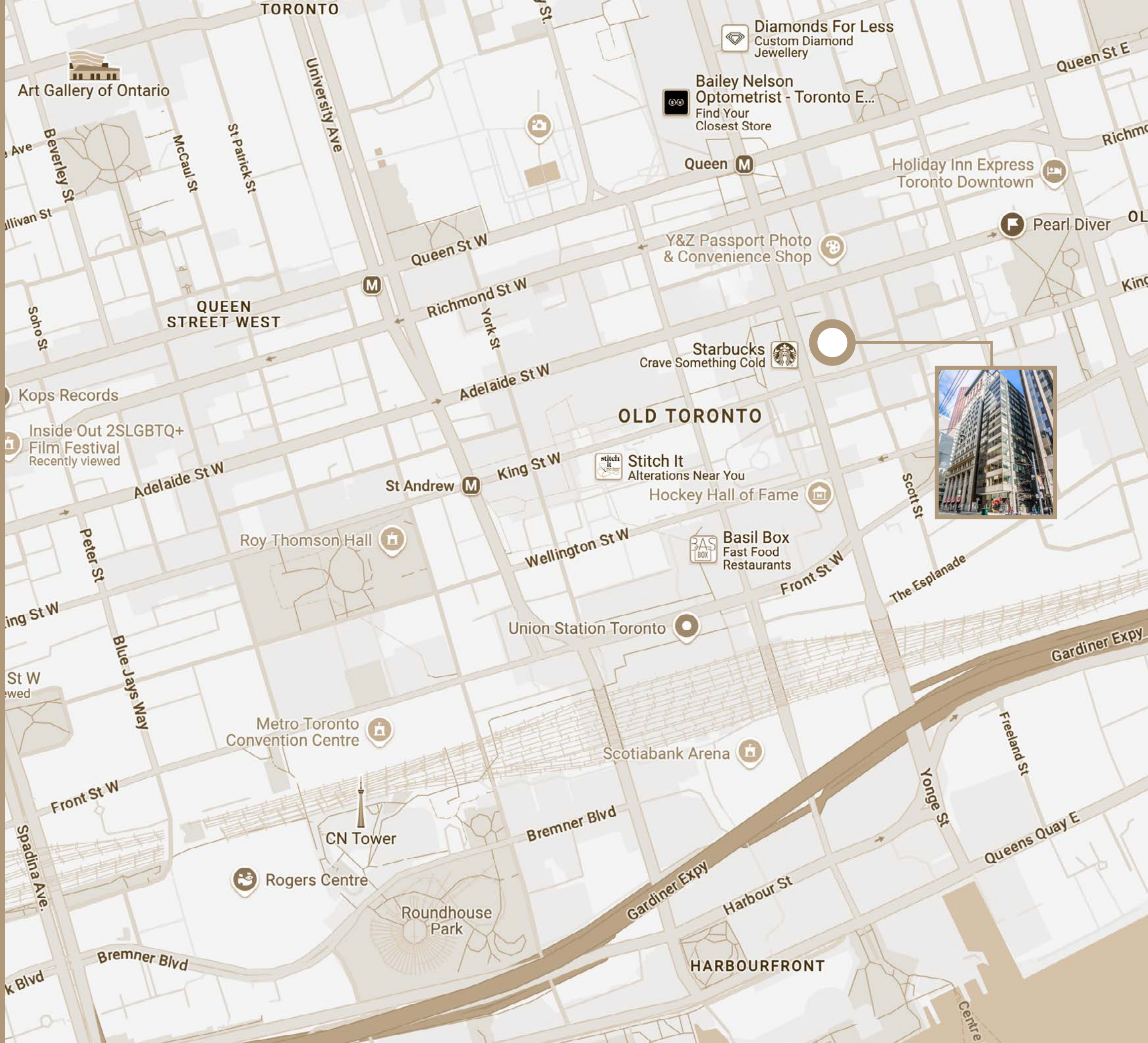
Surrounded by an
abundance of dining, retail,
and entertainment options



Easy access to TTC Subway and
Streetcar



Convenient access to major
highways and Toronto
Pearson International Airport



10 KING EAST

THE HIDDEN GEM OF
FINANCIAL DISTRICT

**KATE
RIZZARDO***

Associate

kate.rizzardo@jll.com

+1 (647) 464-5033