



For sublease

Kingsbrook Office Park

Partial 3rd Floor - 3,120 RSF

Term: Thru August 30th, 2028

Rental rate: Upon request

2 International Drive,
Rye Brook, NY 10573

Space attributes

- Plug-and-play suite with one office, one conference room, pantry and open seating for 30 people
- Sit/Stand desks throughout
- Entire space backed by 125 kW generator managed by landlord
- Supplemental cooling in the IT room and open space to support trading
- Building amenities include fitness center and onsite cafe

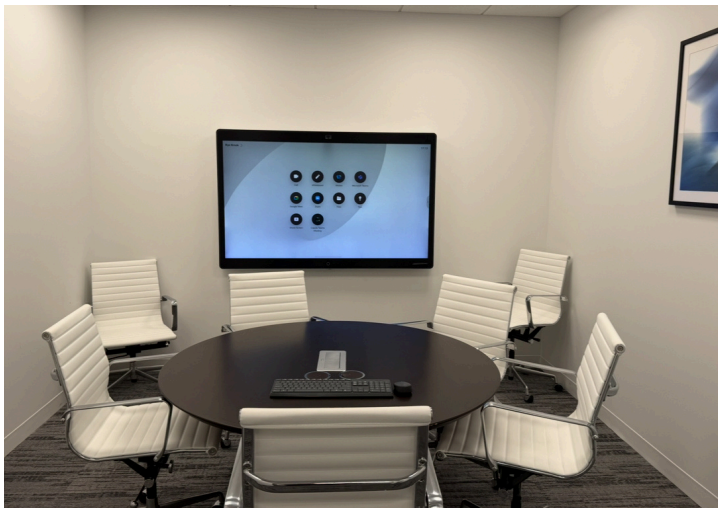
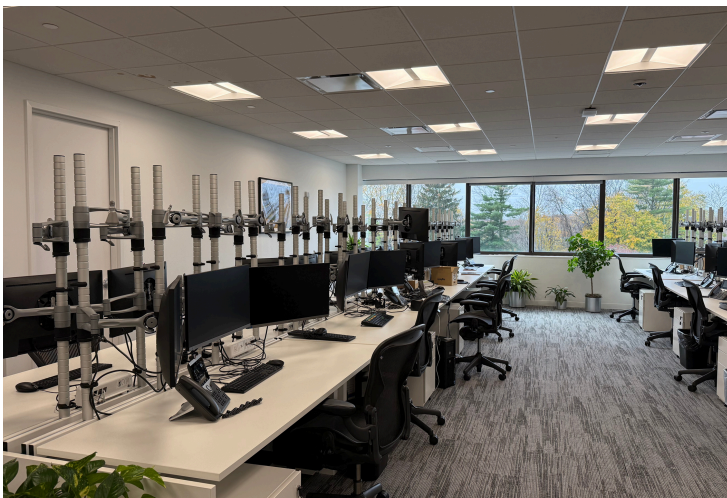
Location

- Close proximity to Port Chester Train Station
- Easily accessible to Westchester Airport

Gil Ohls
Senior Managing Director
+1 203 249 8600
Gil.Ohls@jll.com

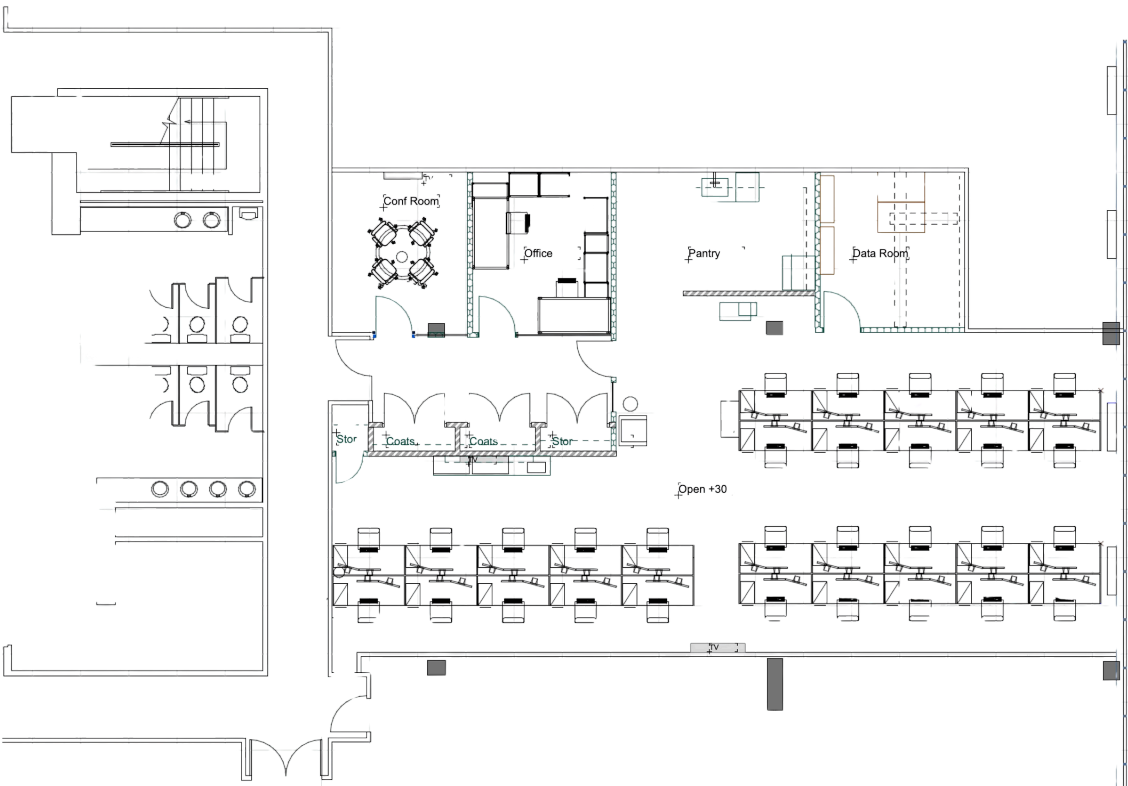
Matt Felice
Executive Vice President
+1 212 812 6422
Matt.Felice@jll.com

2 International Drive / Interior Photos

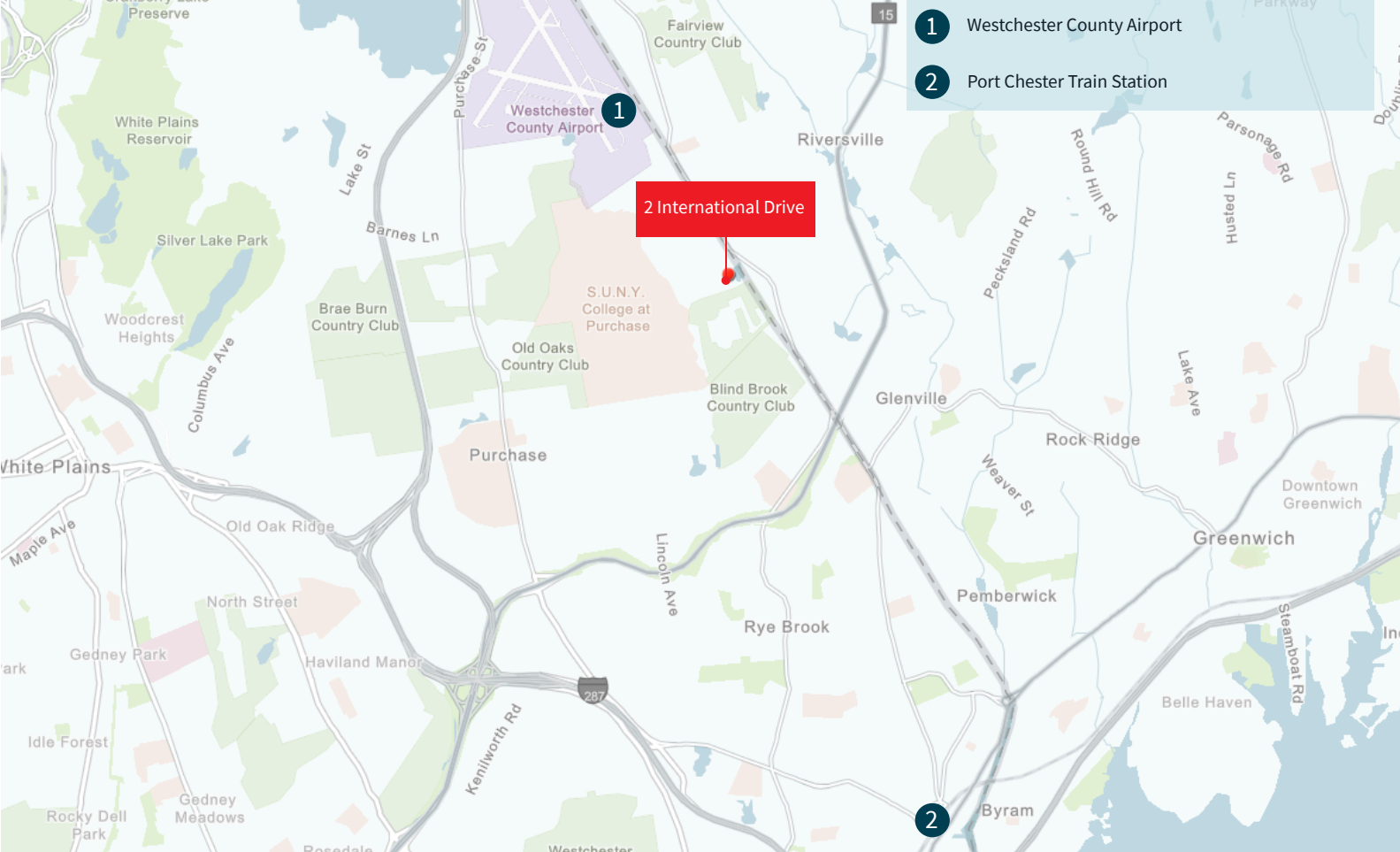


2 International Drive / Kingsbrook Office Park

Partial 3rd Floor: 3,120 RSF



- Trading Desks - 30
- Office - 1
- Conference Room - 1
- Kitchenette - 1
- IDF - 1



Although information has been obtained from sources deemed reliable, neither Owner nor JLL makes any guarantees, warranties or representations, express or implied, as to the completeness or accuracy as to the information contained herein. Any projections, opinions, assumptions or estimates used are for example only. There may be differences between projected and actual results, and those differences may be material. The Property may be withdrawn without notice. Neither Owner nor JLL accepts any liability for any loss or damage suffered by any party resulting from reliance on this information. If the recipient of this information has signed a confidentiality agreement regarding this matter, this information is subject to the terms of that agreement. ©2025 Jones Lang LaSalle IP, Inc. All rights reserved.