



For Sublease

8605 Cross Park Dr
Austin, TX 78754

Details

Full Building: 15,700 SF

- Available: Now
- Term: Through 12/31/2027
- Rate: Contact Broker
- OPEX: \$7.98 PSF



Although information has been obtained from sources deemed reliable, neither Owner nor JLL makes any guarantees, warranties or representations, express or implied, as to the completeness or accuracy as to the information contained herein. Any projections, opinions, assumptions or estimates used are for example only. There may be differences between projected and actual results, and those differences may be material. The Property may be withdrawn without notice. Neither Owner nor JLL accepts any liability for any loss or damage suffered by any party resulting from reliance on this information. If the recipient of this information has signed a confidentiality agreement regarding this matter, this information is subject to the terms of that agreement. ©2025 Jones Lang LaSalle IP, Inc. All rights reserved

Features

- Fully HVAC warehouse
- Grade level loading
- Upgraded power
- 2,000 AMPS at 3ph, 277/480v



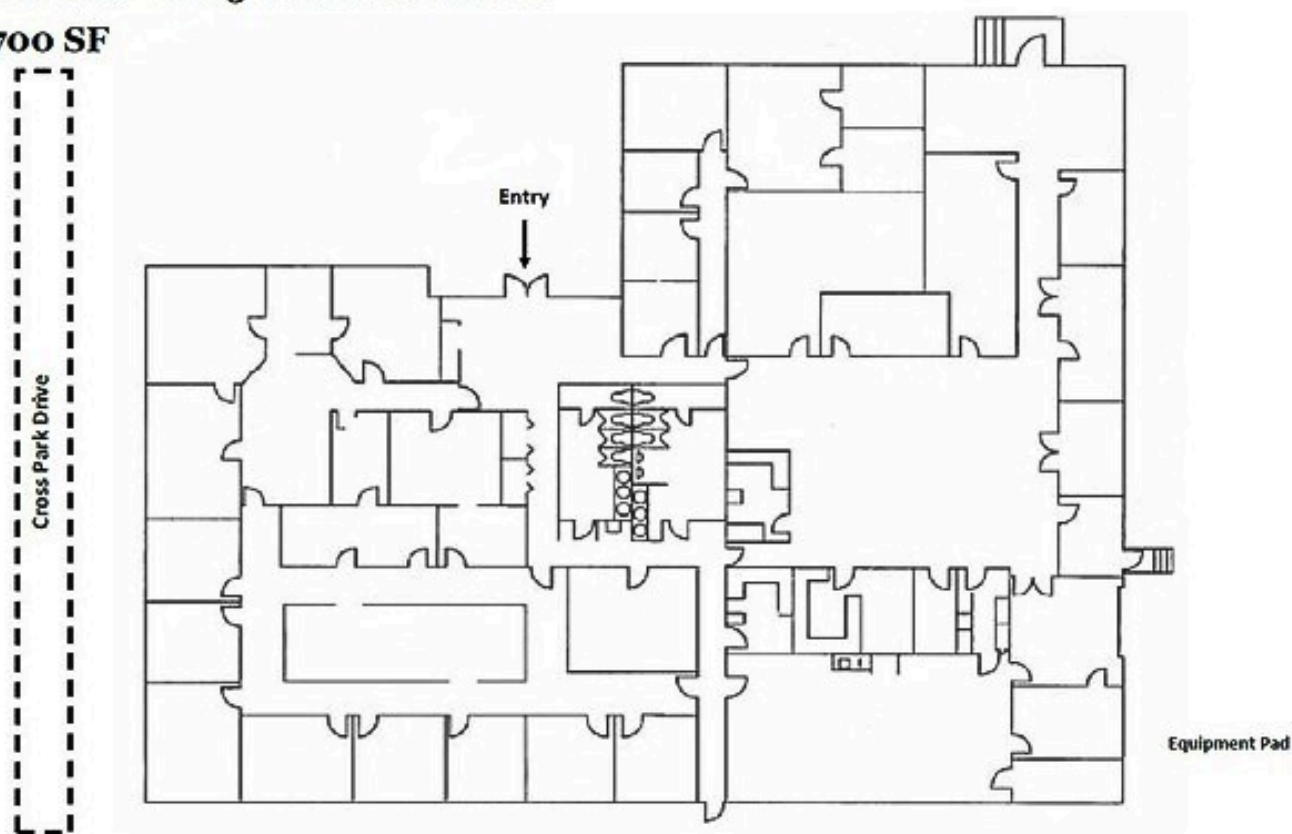
For Sublease

8605 Cross Park

Full Building: 15,700 SF

Floor Plan—8605 Cross Park Drive

15,700 SF



Luke Gholston
Luke.Gholston@jll.com
512 593 4882

Alexx Montanez
Alexx.Montanez@jll.com
512 532 1908